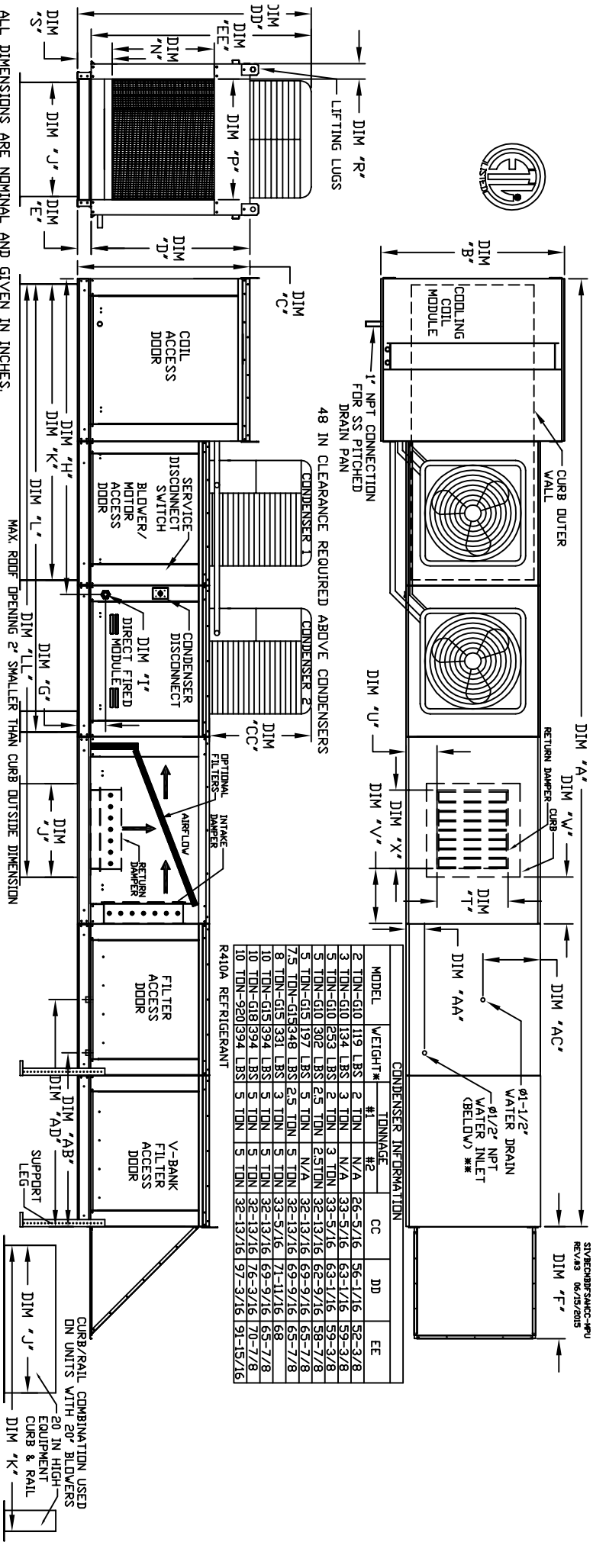


MODULAR OUTDOOR SIDE DISCHARGE DIRECT FIRED RECIRCULATING HEATER WITH COOLING, EVAPORATIVE COOLER INTAKE, V-BANK AND SCREEN INTAKE



**CONDENSER INFORMATION**

MODEL	WEIGHT*	#1	#2	CC	DD	EE
2 TON-G10	119 LBS	2 TON	N/A	36-5/16	56-1/16	52-3/8
3 TON-G10	134 LBS	3 TON	N/A	33-3/16	63-1/16	59-3/8
4 TON-G10	150 LBS	4 TON	N/A	33-3/16	63-1/16	59-3/8
5 TON-G10	167 LBS	5 TON	N/A	32-13/16	62-9/16	58-7/8
6 TON-G10	184 LBS	6 TON	N/A	32-13/16	62-9/16	58-7/8
7.5 TON-G15	197 LBS	7.5 TON	N/A	32-13/16	62-9/16	58-7/8
8 TON-G15	214 LBS	8 TON	N/A	32-13/16	62-9/16	58-7/8
10 TON-G18	244 LBS	10 TON	N/A	32-13/16	62-9/16	58-7/8
12 TON-G18	274 LBS	12 TON	N/A	32-13/16	62-9/16	58-7/8
15 TON-G20	324 LBS	15 TON	N/A	32-13/16	62-9/16	58-7/8

**STANDARD EVAPORATIVE COOLING UNIT**

MODEL	BTU RANGE (GWB)	MIN	MAX
D1250-G10	6" 18	2 1/2 TON	5 TON
D1500-G10	12" 18	5 TON	10 TON
D1250-G15	6" 27.5	2 1/2 TON	5 TON
D1500-G15	12" 27.5	5 TON	10 TON
D1750-G18	18" 27.5	5 TON	10 TON
D1500-G18	24" 27.5	5 TON	10 TON
D1000-G18	24" 36.6	10 TON	10 TON
D1500-G20	30" 45.8	10 TON	10 TON

**CEILING EVAPORATIVE COOLING UNIT**

MODEL	BTU RANGE (GWB)	MIN	MAX
C1310	1310 LBS	6	3 GPH
C1320	1320 LBS	6	3 GPH
C1325	1325 LBS	6	3 GPH
C1330	1330 LBS	6	3 GPH
C1335	1335 LBS	6	3 GPH
C1340	1340 LBS	6	3 GPH
C1345	1345 LBS	6	3 GPH
C1350	1350 LBS	6	3 GPH
C1355	1355 LBS	6	3 GPH
C1360	1360 LBS	6	3 GPH
C1365	1365 LBS	6	3 GPH
C1370	1370 LBS	6	3 GPH
C1375	1375 LBS	6	3 GPH
C1380	1380 LBS	6	3 GPH
C1385	1385 LBS	6	3 GPH
C1390	1390 LBS	6	3 GPH
C1395	1395 LBS	6	3 GPH
C1400	1400 LBS	6	3 GPH
C1405	1405 LBS	6	3 GPH
C1410	1410 LBS	6	3 GPH
C1415	1415 LBS	6	3 GPH
C1420	1420 LBS	6	3 GPH
C1425	1425 LBS	6	3 GPH
C1430	1430 LBS	6	3 GPH
C1435	1435 LBS	6	3 GPH
C1440	1440 LBS	6	3 GPH
C1445	1445 LBS	6	3 GPH
C1450	1450 LBS	6	3 GPH
C1455	1455 LBS	6	3 GPH
C1460	1460 LBS	6	3 GPH
C1465	1465 LBS	6	3 GPH
C1470	1470 LBS	6	3 GPH
C1475	1475 LBS	6	3 GPH
C1480	1480 LBS	6	3 GPH
C1485	1485 LBS	6	3 GPH
C1490	1490 LBS	6	3 GPH
C1495	1495 LBS	6	3 GPH
C1500	1500 LBS	6	3 GPH

**OPTIONAL MIXING BOX FILTERS**

MODEL	BTU RANGE (GWB)	MIN	MAX
M1250-G10	6" 18	2 1/2 TON	5 TON
M1500-G10	12" 18	5 TON	10 TON
M1250-G15	6" 27.5	2 1/2 TON	5 TON
M1500-G15	12" 27.5	5 TON	10 TON
M1750-G18	18" 27.5	5 TON	10 TON
M1500-G18	24" 27.5	5 TON	10 TON
M1000-G18	24" 36.6	10 TON	10 TON
M1500-G20	30" 45.8	10 TON	10 TON

**Direct Fired Profile Plate Specifications:**

Direct fired burners shall have patented QUS Patent No. US66928282, self-adjusting profile plates that allow burners to achieve clean combustion by lifting by-product levels to a maximum of 50ppm of carbon monoxide (CO) and 50ppm of nitrogen dioxide (NO2).

**Applications:**

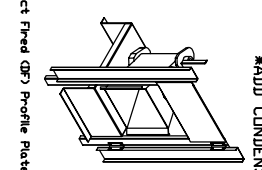
Spring-loaded burner profile plates are engineered to automatically react to the movement of burner tubes to maintain a constant gap between the burner tubes and the profile plates. This feature, all JP units are designed for demand control ventilation (DCV) requirements (re-circulating JP heaters).

**General Construction:**

Profile plates shall be formed from 600 galvanized steel.

Profile plates shall be mounted along the same plane as the discharge of the burner.

Design shall incorporate properly torqued, permanently mounted spring hinges.



Direct Fired (DF) Profile Plate Assembly

**Direct Fired (DF) Profile Plate Assembly**

Profile plates shall be formed from 600 galvanized steel.

Profile plates shall be mounted along the same plane as the discharge of the burner.

Design shall incorporate properly torqued, permanently mounted spring hinges.

**MAX. EVAP WATER PRESSURE = 50 PSI @ 70 DEG. F**

MODEL	BTU RANGE (GWB)	MIN	MAX
D1250-G10	6" 18	2 1/2 TON	5 TON
D1500-G10	12" 18	5 TON	10 TON
D1250-G15	6" 27.5	2 1/2 TON	5 TON
D1500-G15	12" 27.5	5 TON	10 TON
D1750-G18	18" 27.5	5 TON	10 TON
D1500-G18	24" 27.5	5 TON	10 TON
D1000-G18	24" 36.6	10 TON	10 TON
D1500-G20	30" 45.8	10 TON	10 TON