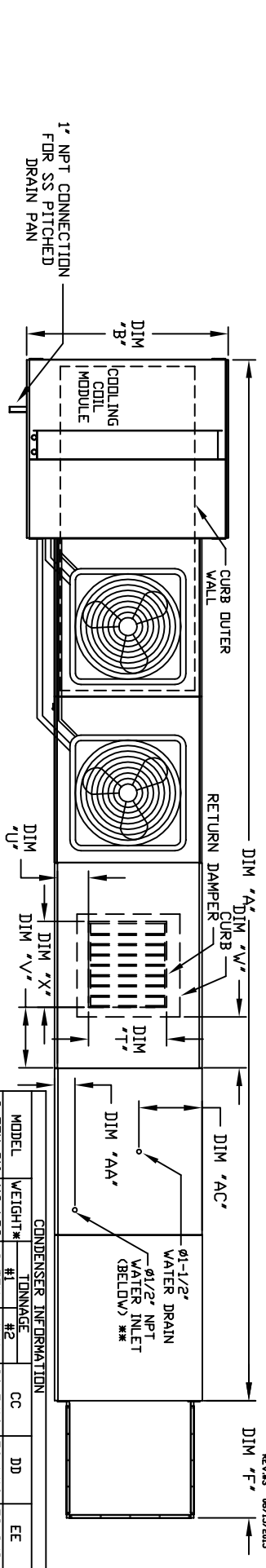


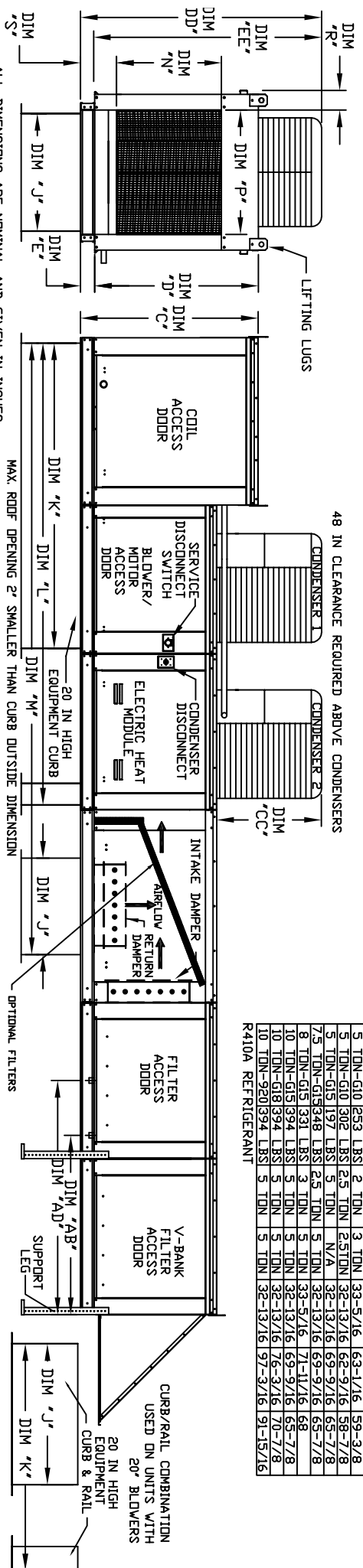
MODULAR OUTDOOR SIDE DISCHARGE ELECTRIC HEATER PACKAGED UNIT WITH COOLING, MIXING BOX, EVAPORATIVE COOLER INTAKE, V-BANK AND SCREEN INTAKE



CONDENSER INFORMATION

MODEL	WEIGHT*	TONNAGE	#1	#2	CC	DD	EE
2 TON-G10	119 LBS	2 TON	N/A	26-5/16	56-1/16	52-3/8	
3 TON-G10	134 LBS	3 TON	N/A	33-5/16	63-1/16	59-3/8	
5 TON-G10	253 LBS	2 TON	3	33-5/16	63-1/16	59-3/8	
5 TON-G10	302 LBS	2.5 TON	2.5 TON	32-13/16	62-9/16	58-7/8	
5 TON-G15	197 LBS	5 TON	N/A	32-13/16	69-9/16	65-7/8	
7.5 TON-G15	348 LBS	2.5 TON	5 TON	32-13/16	69-9/16	65-7/8	
8 TON-G15	331 LBS	3 TON	5 TON	33-5/16	71-1/16	68	
10 TON-G15	394 LBS	3 TON	5 TON	35-13/16	69-9/16	65-7/8	
10 TON-G18	394 LBS	5 TON	5 TON	32-13/16	76-3/16	70-1/8	
10 TON-G20	394 LBS	5 TON	5 TON	32-13/16	97-3/16	91-15/16	

R410A REFRIGERANT



ALL DIMENSIONS ARE NOMINAL AND GIVEN IN INCHES.

MAX. ROOF OPENING 2" SMALLER THAN CURB OUTSIDE DIMENSION

MODEL	A	B	C	D	E	F	J	K	L	M	N	P	R	S	T	U	V	W	X	AA	AB	AC	AD	
E1-G10	223-3/8	39-3/8	42-3/4	39	3-3/4	22-3/8	21	71	113-1/4	176-15/16	17-1/2	16	11	5-3/4	14	8	14	16-1/2	18	4-1/2	138-1/2	13	48-1/4	20-x25-x2" (3)
E2-G15	231-3/8	49-3/8	47-3/4	44	3-3/4	30-5/16	31	79	121-1/4	189-15/16	29-3/4	22-3/4	12	5-3/4	14	8	14	7-1/2	24	4-1/2	138-1/2	18	48-1/4	16-x20-x2" (8)
E3-G18	248-3/8	54-3/8	56-3/8	51-1/8	5-1/4	34-3/16	35	84	126-1/4	203-15/16	29-5/8	29-5/8	30	11-1/2	7-3/8	8	7	4-1/2	30	4-1/2	144	20	57-1/4	20-x25-x2" (8)
E4-9E20	297-7/8	60-7/16	64-3/8	59-1/8	5-1/4	47-1/4	42	115-3/16	169-1/2	252-13/16	36-3/4	34	12-1/2	7-3/8	10	11	8	36	4-1/2	141-1/8	23-1/2	152-7/8	16-x20-x2" (15)	

UNIT INFORMATION:

MODEL	MIN	MAX	TOT. WEIGHT	MEDIA SIZE & QTY	VEL. @ MAX. CFM	NOZZLES	MAX. FLOW RATE
E1-G10	2 Ton	5 Ton	1265 LBS	20"x25"x2" (3)	406 FPM	6	3.9 GPH
E2-G15	5 Ton	10 Ton	1735 LBS	16"x20"x2" (8)	429 FPM	10	6.5 GPH
E3-G18	10 Ton	10 Ton	2125 LBS	20"x25"x2" (8)	348 FPM	14	8.4 GPH
E4-9E20	10 Ton	10 Ton	3365 LBS	16"x20"x2" (15)	572 FPM	24	10.15 GPH

STANDARD EVAPORATIVE COOLING UNIT

MODEL	MIN	MAX	TOT. WEIGHT	MEDIA SIZE & QTY	VEL. @ MAX. CFM	NOZZLES	MAX. FLOW RATE
E1-G10	2 Ton	5 Ton	1270 LBS	20"x24"x12"	1050 FPM	12	3.9 GPH
E2-G15	5 Ton	10 Ton	1730 LBS	25"x32"x12"	1080 FPM	20	6.5 GPH
E3-G18	10 Ton	10 Ton	2115 LBS	30"x36"x12"	1067 FPM	28	8.4 GPH
E4-9E20	10 Ton	10 Ton	3335 LBS	38"x43"x12"	1322 FPM	35	10.15 GPH

OPTIONAL MIXING BOX FILTERS

MODEL	MIN	MAX	TOT. WEIGHT	MEDIA SIZE & QTY	VEL. @ MAX. CFM	NOZZLES	MAX. FLOW RATE
E1-G10	2 Ton	5 Ton	1270 LBS	10"x15"x2" (5)	1050 FPM	12	3.9 GPH
E2-G15	5 Ton	10 Ton	1730 LBS	15"x15"x2" (2)	1080 FPM	20	6.5 GPH
E3-G18	10 Ton	10 Ton	2115 LBS	15"x15"x2" (2)	1067 FPM	28	8.4 GPH
E4-9E20	10 Ton	10 Ton	3335 LBS	18"x25"x2" (4), 16"x20"x2" (2)	1322 FPM	35	10.15 GPH

MAX. FILTER VELOCITY

MODEL	CFM	VELOCITY
E1-G10	8600	418 FPM
E2-G15	8500	464 FPM
E3-G18	8000	348 FPM
E4-9E20	13000	495 FPM