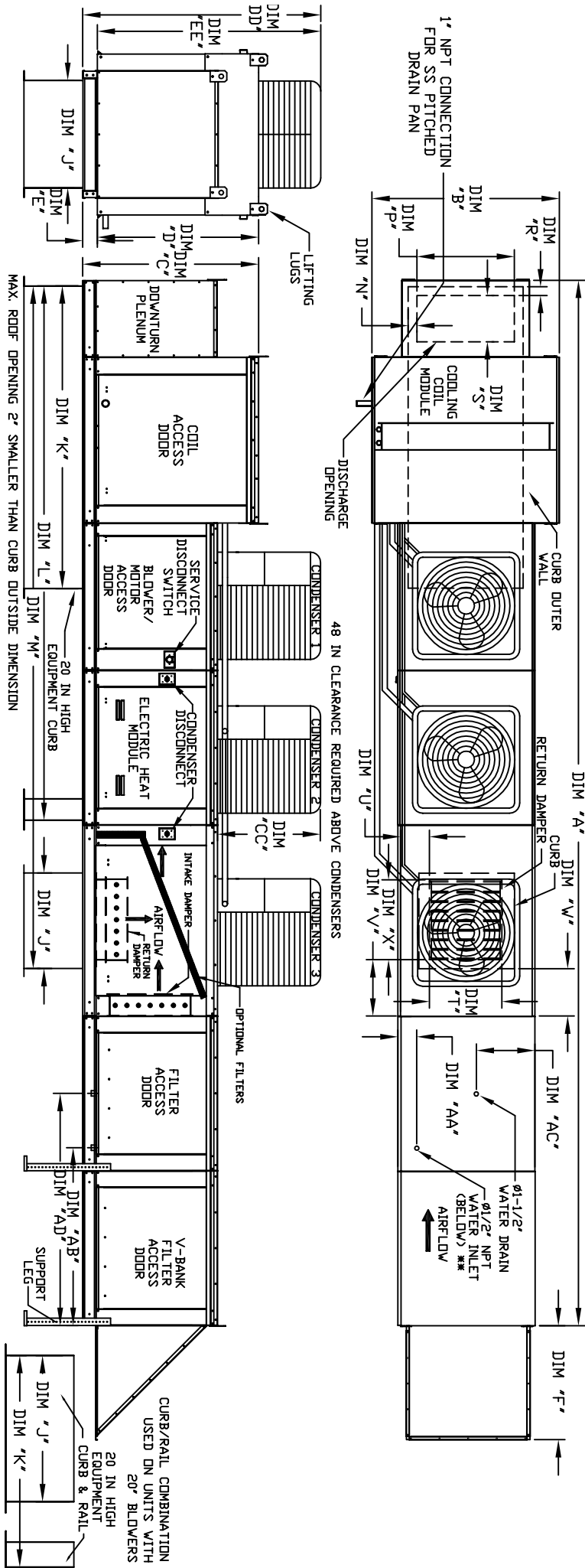


MODULAR OUTDOOR DOWN DISCHARGE ELECTRIC HEATER PACKAGED UNIT WITH COOLING, EVAPORATIVE COOLER INTAKE, V-BANK, MIXING BOX AND SCREEN INTAKE

S1VEBCHER6AKCDB-HPU-15
REV. #2 06/15/2015



ALL DIMENSIONS ARE NOMINAL AND GIVEN IN INCHES.

MODEL	A	B	C	D	E	F	J	K	CURB/RAIL	DISCHARGE OPENING	RETURN DAMPER OPENING	WATER INLET DRAIN OPENING	FILTER SIZE & QTY	MAX. FILTER VELOCITY											
E3-G18	272-3/4	54-3/8	56-3/8	51-1/8	5-1/4	34-3/16	35	84	150-5/8	190-1/4	8-7/8	R2-3/8	3	18	28	8	7	4-1/2	30	4-1/2	44	AD	57-1/4	20"x25"x2" (8)	@8000 CFM = 348 FPM
E4-920	328-1/4	60-7/16	64-3/8	59-1/8	5-1/4	47-1/4	42	115-3/16	199-7/8	248-1/16	5-1/4	R3-1/2	33	10	11	8	36	4-1/2	41-1/8	23-1/2	52-7/8	16"x20"x2" (15)	@13000 CFM = 495 FPM		

UNIT INFORMATION

MODEL	TONNAGE RANGE	STANDARD EVAPORATIVE COOLING UNIT	CELUDEK EVAPORATIVE COOLING UNIT	OPTIONAL MIXING BOX FILTERS
E3-G18	15 Ton	TOT. WEIGHT 2265 LBS MEDIA SIZE & QTY 20"x25"x2" (8) VEL. @ MAX. CFM 348 FPM	TOT. WEIGHT 2265 LBS MEDIA SIZE & QTY 30"x36"x12" (2) VEL. @ MAX. CFM 1067 FPM	15"x20"x2" (4), 15"x15"x2" (2)
E4-920	15 Ton	TOT. WEIGHT 3553 LBS MEDIA SIZE & QTY 16"x20"x2" (15) VEL. @ MAX. CFM 572 FPM	TOT. WEIGHT 3523 LBS MEDIA SIZE & QTY 38"x43"x12" (2) VEL. @ MAX. CFM 1322 FPM	18"x25"x2" (4), 16"x20"x2" (2)

MAX CONDENSING UNIT WEIGHT TO WEIGHT IN TABLE ABOVE ** MAX EVAP WATER PRESSURE = 50 PSI @ 70 DEG F

MODEL	WEIGHT*	TONNAGE	CONDENSER INFORMATION	CC	DD	EE
15 TON-G18	591 LBS	5 TON	#1 #2 #3			
15 TON-920	591 LBS	5 TON				