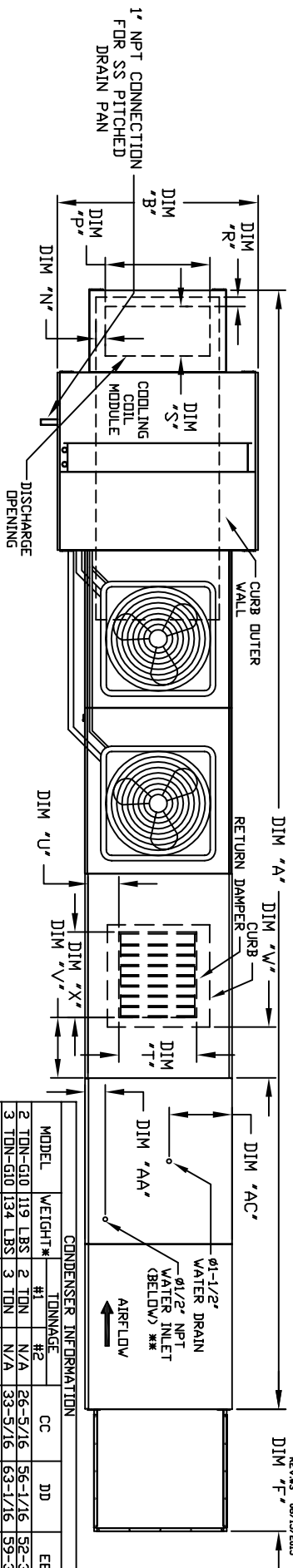
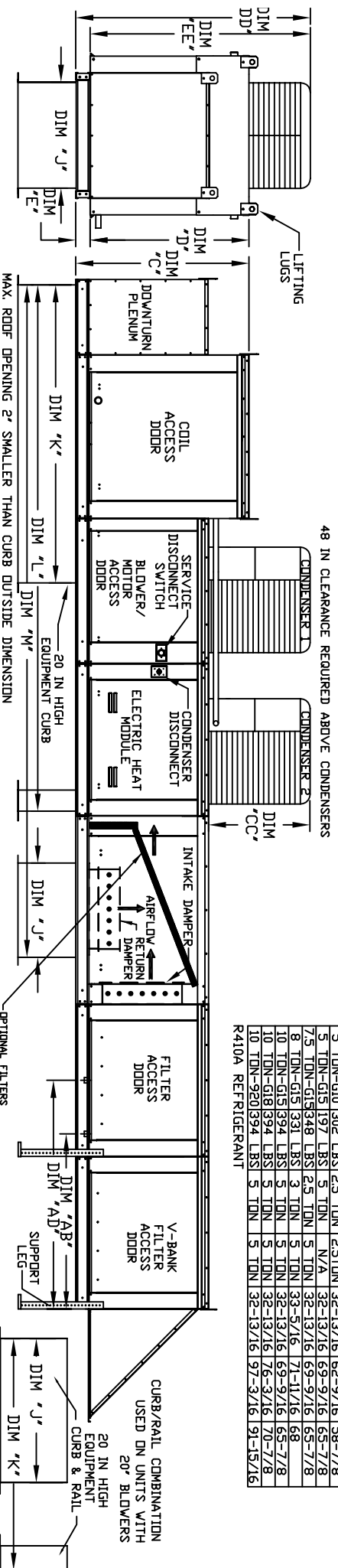


MODULAR OUTDOOR DOWN DISCHARGE ELECTRIC HEATER PACKAGED UNIT WITH COOLING, MIXING BOX, EVAPORATIVE COOLER INTAKE, V-BANK AND SCREEN INTAKE



MODEL	WEIGHT*	#1	#2	CC	DD	EE
2 TON-G10 119 LBS	2 TON	N/A	26-5/16	56-1/16	52-3/8	
3 TON-G10 134 LBS	3 TON	N/A	33-5/16	63-1/16	59-3/8	
5 TON-G10 197 LBS	5 TON	N/A	38-5/16	68-1/16	65-7/8	
7.5 TON-G15 331 LBS	7.5 TON	N/A	42-1/16	71-1/16	68-5/8	
10 TON-G15 394 LBS	10 TON	N/A	44-1/16	73-1/16	70-7/8	
15 TON-G18 516 LBS	15 TON	N/A	48-1/16	77-1/16	74-1/8	
20 TON-G20 638 LBS	20 TON	N/A	52-1/16	81-1/16	78-1/8	
25 TON-G20 760 LBS	25 TON	N/A	56-1/16	85-1/16	82-1/8	
30 TON-G20 882 LBS	30 TON	N/A	60-1/16	89-1/16	86-1/8	
35 TON-G20 1004 LBS	35 TON	N/A	64-1/16	93-1/16	90-1/8	
40 TON-G20 1126 LBS	40 TON	N/A	68-1/16	97-1/16	94-1/8	
45 TON-G20 1248 LBS	45 TON	N/A	72-1/16	101-1/16	98-1/8	
50 TON-G20 1370 LBS	50 TON	N/A	76-1/16	105-1/16	102-1/8	
55 TON-G20 1492 LBS	55 TON	N/A	80-1/16	109-1/16	106-1/8	
60 TON-G20 1614 LBS	60 TON	N/A	84-1/16	113-1/16	110-1/8	
65 TON-G20 1736 LBS	65 TON	N/A	88-1/16	117-1/16	114-1/8	
70 TON-G20 1858 LBS	70 TON	N/A	92-1/16	121-1/16	118-1/8	
75 TON-G20 1980 LBS	75 TON	N/A	96-1/16	125-1/16	122-1/8	
80 TON-G20 2102 LBS	80 TON	N/A	100-1/16	129-1/16	126-1/8	
85 TON-G20 2224 LBS	85 TON	N/A	104-1/16	133-1/16	130-1/8	
90 TON-G20 2346 LBS	90 TON	N/A	108-1/16	137-1/16	134-1/8	
95 TON-G20 2468 LBS	95 TON	N/A	112-1/16	141-1/16	138-1/8	
100 TON-G20 2590 LBS	100 TON	N/A	116-1/16	145-1/16	142-1/8	



MAX. ROOF OPENING 2' SMALLER THAN CURB OUTSIDE DIMENSION

48 IN CLEARANCE REQUIRED ABOVE CONDENSERS

ALL DIMENSIONS ARE NOMINAL AND GIVEN IN INCHES.

MODEL	A	B	C	D	E	F	G	H	I	J	K	L	M	N	P	R	S	T	U	V	X	AA	AB	AC	AD
E1-G10 241-3/4	39	3-3/4	22-3/8	21	71	131	5-1/8	163	5-1/16	6-1/8	13-7/8	3-1/4	11-1/2	14	8	14	12-1/2	18	4-1/2	38-1/2	13	48-1/4	20"x25"x2"	(3)	3600 CFM = 418 FPM
E2-G15 255-3/4	44	3-3/4	30-5/16	31	79	145	5-1/8	182	5-1/16	6-7/8	15-3/8	3-1/4	12-3/8	18	11	17-1/2	24	4-1/2	39-1/2	18	48-1/4	20"x25"x2"	(3)	3600 CFM = 464 FPM	
E3-G18 272-3/4	51	3-3/4	34-3/16	35	84	150	5-7/8	190	5-1/16	7-1/8	16-3/8	3-1/4	13-3/8	20	12	19-1/2	28	4-1/2	41-1/2	20	57-1/4	20"x25"x2"	(3)	3600 CFM = 495 FPM	
E4-G20 328-1/4	64	3-3/4	38-3/8	39	101	175	5-7/8	215	5-1/16	8-1/8	18-3/8	3-1/4	15-3/8	28	15	23-1/2	36	4-1/2	47-1/2	28	67-1/4	20"x25"x2"	(3)	3600 CFM = 578 FPM	

UNIT INFORMATION

MODEL	TONNAGE RANGE	TOT. WEIGHT	MEDIA SIZE & QTY	VEL. @ MAX. CFM NOZZLES	MAX. FLOW RATE
E1-G10	2 Ton	1345 LBS	20"x25"x2" (3)	406 FPM	6 GPH
E2-G15	5 Ton	1850 LBS	16"x20"x2" (8)	429 FPM	10 GPH
E3-G18	10 Ton	2265 LBS	20"x25"x2" (8)	348 FPM	14 GPH
E4-G20	10 Ton	3555 LBS	16"x20"x2" (15)	572 FPM	24 GPH

STANDARD EVAPORATIVE COOLING UNIT

MODEL	TONNAGE RANGE	TOT. WEIGHT	MEDIA SIZE & QTY	VEL. @ MAX. CFM NOZZLES	MAX. FLOW RATE
E1-G10	2 Ton	1345 LBS	20"x25"x2" (3)	406 FPM	6 GPH
E2-G15	5 Ton	1850 LBS	16"x20"x2" (8)	429 FPM	10 GPH
E3-G18	10 Ton	2265 LBS	20"x25"x2" (8)	348 FPM	14 GPH
E4-G20	10 Ton	3555 LBS	16"x20"x2" (15)	572 FPM	24 GPH

CELDK EVAPORATIVE COOLING UNIT

MODEL	TONNAGE RANGE	TOT. WEIGHT	MEDIA SIZE & QTY	VEL. @ MAX. CFM NOZZLES	MAX. FLOW RATE
E1-G10	2 Ton	1350 LBS	20"x24"x12"	1050 FPM	3.9 GPH
E2-G15	5 Ton	1845 LBS	25"x32"x12"	1080 FPM	6.5 GPH
E3-G18	10 Ton	2255 LBS	30"x36"x12"	1067 FPM	8.4 GPH
E4-G20	10 Ton	3525 LBS	38"x43"x12"	1322 FPM	10.15 GPH

OPTIONAL MIXING BOX FILTERS

MODEL	TONNAGE RANGE	TOT. WEIGHT	MEDIA SIZE & QTY	VEL. @ MAX. CFM NOZZLES	MAX. FLOW RATE
E1-G10	2 Ton	10"x16"x2" (5)			
E2-G15	5 Ton	20"x25"x2" (2), 16"x25"x2" (1)			
E3-G18	10 Ton	15"x20"x2" (4), 15"x15"x2" (2)			
E4-G20	10 Ton	18"x25"x2" (4), 16"x20"x2" (2)			