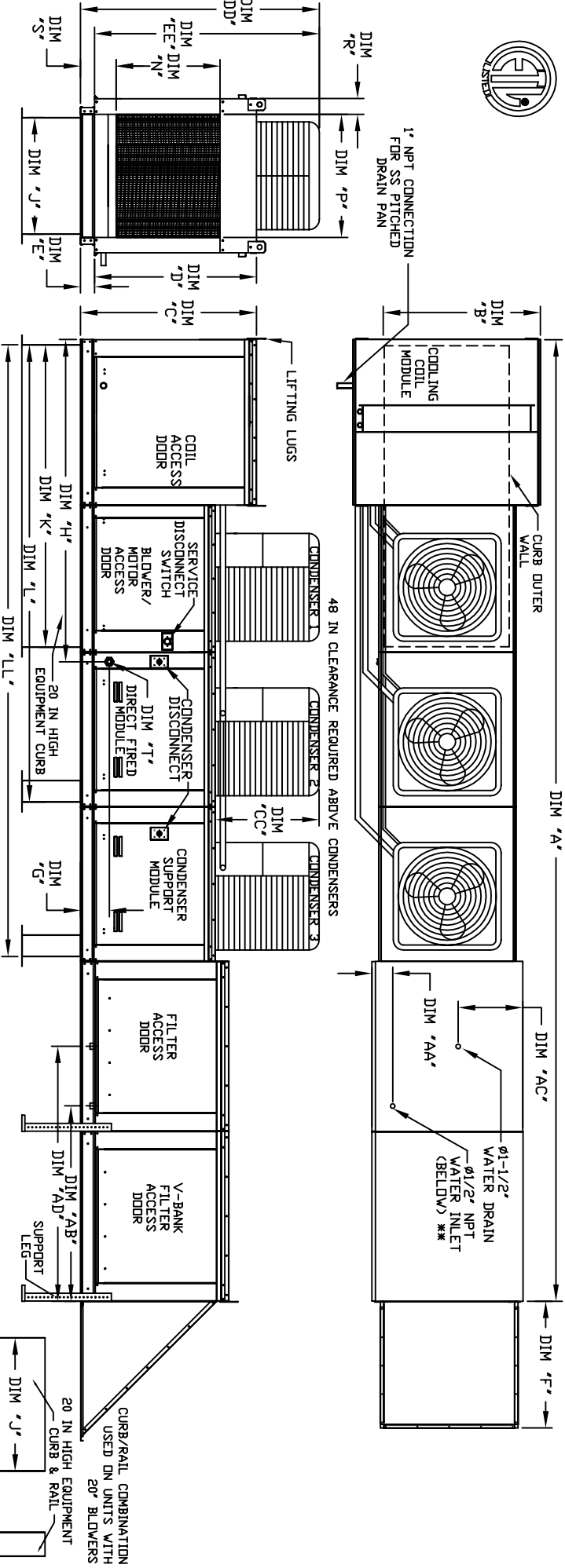


MODULAR OUTDOOR SIDE DISCHARGE DIRECT FIRED HEATER PACKAGED UNIT WITH COOLING, LPD EVAPORATIVE COOLER INTAKE, V-BANK AND SCREEN INTAKE



ALL DIMENSIONS ARE NOMINAL AND GIVEN IN INCHES.

UNIT INFORMATION

MODEL	A	B	C	D	E	F	G	H	J	K	L	LL	N	P	R	S	AA	AB	AC	AD	AE	AF	AG	AH	AI	AL
D1500-G18	24-2	5/8	54-3/8	56-3/8	51-1/8	5-1/4	47-1/4	9-1/2	90-1/16	35	84	126-1/4	168-1/2	29-5/8	30	11-1/2	7-3/8	4-1/2	41-1/8	23-1/2	56-7/8	16-x20-x2" (15)	16-x20-x2" (15)	16-x20-x2" (15)	16-x20-x2" (15)	20-x25-x2" (12)
D1750-G18	24-2	5/8	54-3/8	56-3/8	51-1/8	5-1/4	47-1/4	9-1/2	90-1/16	35	84	126-1/4	168-1/2	29-5/8	30	11-1/2	7-3/8	4-1/2	41-1/8	23-1/2	56-7/8	16-x20-x2" (15)	16-x20-x2" (15)	16-x20-x2" (15)	20-x25-x2" (12)	
D1000-G18	24-2	5/8	54-3/8	56-3/8	51-1/8	5-1/4	47-1/4	9-1/2	90-1/16	35	84	126-1/4	168-1/2	29-5/8	30	11-1/2	7-3/8	4-1/2	41-1/8	23-1/2	56-7/8	16-x20-x2" (15)	16-x20-x2" (15)	16-x20-x2" (15)	20-x25-x2" (12)	
D1000-920	29-7	7/8	60-7/16	64-3/8	59-1/8	5-1/4	49-5/8	13-9/16	120-5/8	42	115-3/16	169-1/2	223-13/16	36-3/4	34	12-1/2	7-3/8	4-1/2	41-1/8	28-7/8	56-7/8	20-x25-x2" (12)	20-x25-x2" (12)	20-x25-x2" (12)	20-x25-x2" (12)	
D1500-920	29-7	7/8	60-7/16	64-3/8	59-1/8	5-1/4	49-5/8	13-9/16	120-5/8	42	115-3/16	169-1/2	223-13/16	36-3/4	34	12-1/2	7-3/8	4-1/2	41-1/8	28-7/8	56-7/8	20-x25-x2" (12)	20-x25-x2" (12)	20-x25-x2" (12)	20-x25-x2" (12)	

MODEL	BURNER LENGTH	BTU RANGE	ORND	GAS PRESSURE	GAS CONNECTION	TONNAGE RANGE
D1500-G18	12"	18	550	7" VC	1/4" VC	15 TON
D1750-G18	16"	27.5	825	7" VC	1/4" VC	15 TON
D1000-G18	16"	36.5	1100	7" VC	1/4" VC	15 TON
D1000-920	24"	36.5	1100	7" VC	1/4" VC	15 TON
D1500-920	30"	45.8	1375	7" VC	3/4" VC	15 TON

CONDENSER INFORMATION	CC	DD	EE				
MODEL	WEIGHT#	#1	#2	#3	CC	DD	EE
15 TON-G18	591 LBS	5 TON	5 TON	5 TON	32-13/16	76-3/16	70-7/8
15 TON-920	591 LBS	5 TON	5 TON	5 TON	32-13/16	97-3/16	91-15/16

CELLDEK EVAPORATIVE COOLING UNIT	TOT. WEIGHT	MEDIA SIZE & QTY	NOZZLES	MAX. FLOW RATE
2030 LBS	38-x43-x12	35	1015	GPH
5030 LBS	38-x43-x12	35	1015	GPH
6040 LBS	38-x43-x12	35	1015	GPH
3030 LBS	43-x54-x12	42	1265	GPH

Direct Fired Profile Plate Specifications

Direct fired burners shall have patented US Patent No. US6695232B2, self-adjusting profile plates design and/or ensure proper flame structure and pressure drop across the burner. Profile plates shall be made of mild steel or stainless steel. The profile plates shall be made of a medium of 50ppm of carbon monoxide (CO), and 0.5ppm of nitrogen dioxide (NO2).

Application: Spring-loaded burner profile plates are engineered to automatically react to the momentum of the flame. The burner profile plates are designed for standard ventilation (DV) requirements. All profile plate assemblies shall be included in the DF unit's ETL listing and comply with combined safety standards ANSI Z89.4 and CSA 37 (non-re-circulating DF heaters) and ANSI Z89.18 (re-circulating DF heaters).

General Construction: Profile plates shall be formed from 60ksi galvanized steel. Profile plates shall be mounted along the same plane as the discharge of the burner. Design shall incorporate proper torque, permanently mounted spring hinges.

Direct Fired DF Profile Plate Assm