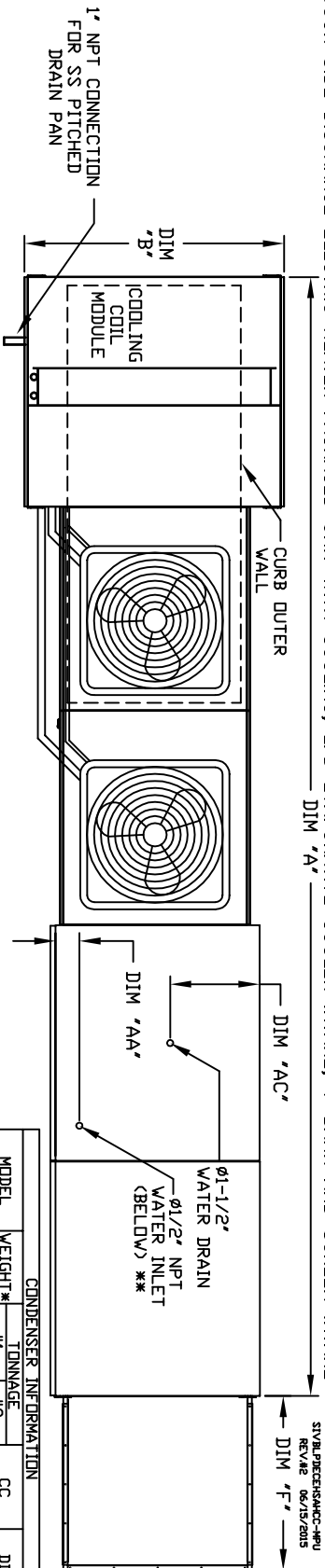


MODULAR OUTDOOR SIDE DISCHARGE ELECTRIC HEATER PACKAGED UNIT WITH COOLING, LPD EVAPORATIVE COOLER INTAKE, V-BANK AND SCREEN INTAKE

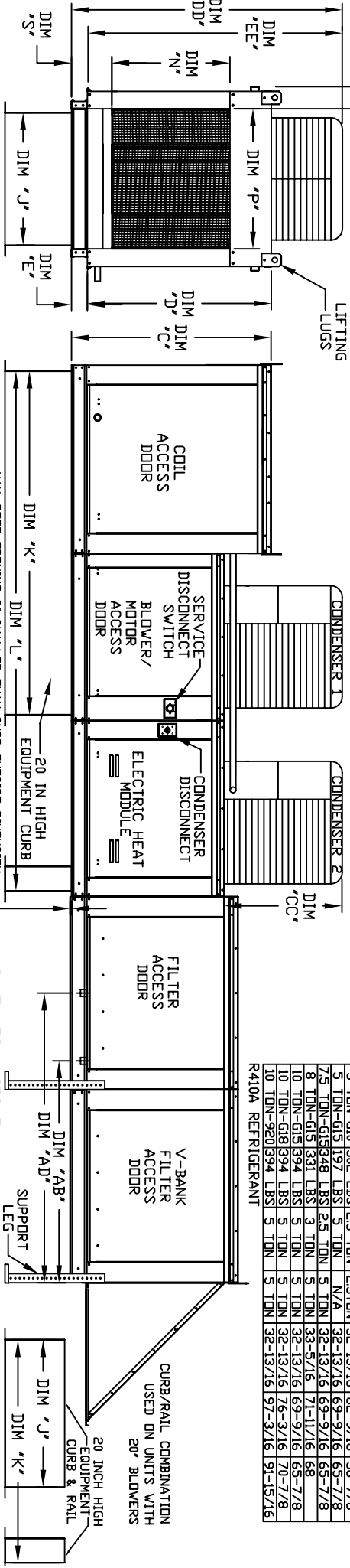


48 IN CLEARANCE REQUIRED ABOVE CONDENSERS

CONDENSER INFORMATION

MODEL	WEIGHT*	#1 TONNAGE	#2 TONNAGE	CC	DD	EE
2 TON-G10	119 LBS	2 TON	N/A	26-5/16	56-1/16	52-3/8
3 TON-G10	134 LBS	3 TON	N/A	33-5/16	63-1/16	59-3/8
5 TON-G10	253 LBS	2 TON	3 TON	33-5/16	63-1/16	59-3/8
5 TON-G10	302 LBS	2.5 TON	2.5 TON	32-13/16	62-9/16	58-7/8
5 TON-G15	197 LBS	5 TON	N/A	32-13/16	69-9/16	65-7/8
7.5 TON-G15	348 LBS	2.5 TON	5 TON	32-13/16	69-9/16	65-7/8
8 TON-G15	331 LBS	3 TON	5 TON	33-5/16	71-11/16	68
10 TON-G15	394 LBS	5 TON	5 TON	32-13/16	69-9/16	65-7/8
10 TON-G18	394 LBS	5 TON	5 TON	32-13/16	76-3/16	70-7/8
10 TON-G20	394 LBS	5 TON	5 TON	32-13/16	97-3/16	91-13/16

R410A REFRIGERANT



ALL DIMENSIONS ARE NOMINAL AND GIVEN IN INCHES.

MAX. ROOF OPENING 2" SMALLER THAN CURB OUTSIDE DIMENSION

1-1/2" DN. F2 UNITS ONLY

MODEL	UNIT DIMENSIONS													CURB/RAIL	DISCHARGE OPENING	WATER INLET DRAIN OPENING	FILTER SIZE & QTY								
	A	B	C	D	E	F	G	H	I	J	K	L	M					N	O	P	Q	R	S	AA	AB
E1-G10	181-1/8	39-3/8	42-3/4	39	3-3/4	30-5/16	21	71	113-1/4	17-1/2	16	1-5/8	5-3/4	4-1/2	38-1/2	18	48-1/4	16-x20-x2" (8)							
E2-G15	201-1/8	49-3/8	47-3/4	44	3-3/4	34-3/16	31	79	121-1/4	23-3/4	30	1-1/2	5-3/4	4-1/2	44	20	97-1/4	20-x25-x2" (8)							
E3-G18	200-3/8	34-3/8	36-3/8	51-1/8	5-1/4	47-1/4	35	84	126-1/4	29-5/8	30	1-1/2	7-3/8	4-1/2	41-1/8	23-1/2	152-7/8	16-x20-x2" (15)							
E4-G20	243-9/16	60-7/16	64-3/8	59-1/8	5-1/4	49-5/8	42	115-3/16	169-1/2	36-3/4	34	1-1/2	7-3/8	4-1/2	41-1/8	28-7/8	152-7/8	20-x25-x2" (12)							

UNIT INFORMATION

MODEL	TONNAGE RANGE		CELUDEK EVAPORATIVE COOLING UNIT	
	MIN	MAX	TOT. WEIGHT MEDIA SIZE & QTY INCHES	MAX. FLOW RATE
E1-G10	2 Ton	5 Ton	25"x32"x12"	20 6.5 GPH
E2-G15	5 Ton	10 Ton	30"x36"x12"	28 8.4 GPH
E3-G18	10 Ton	10 Ton	2025 LBS	35 10.15 GPH
E4-G20	10 Ton	10 Ton	3020 LBS	42 12.6 GPH