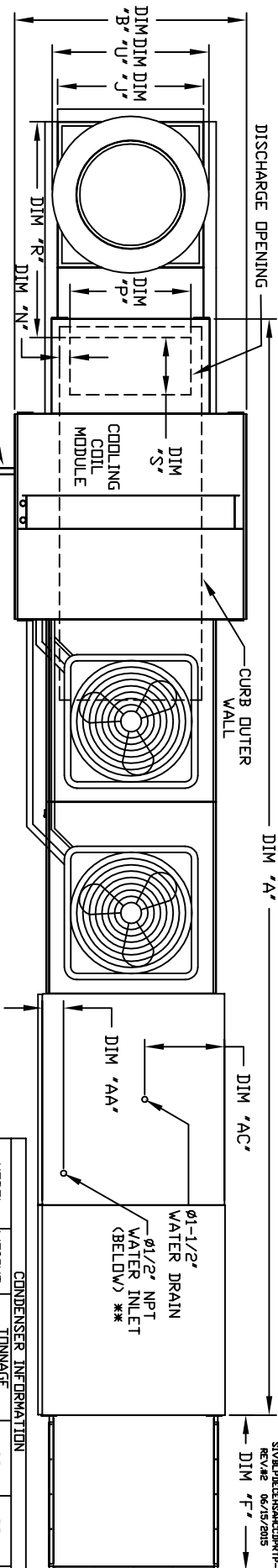


# MODULAR OUTDOOR DOWN DISCHARGE ELECTRIC HEATER-ROOF TOP PACKAGE WITH COOLING, LPD EVAPORATIVE COOLER, V-BANK AND SCREEN INTAKE

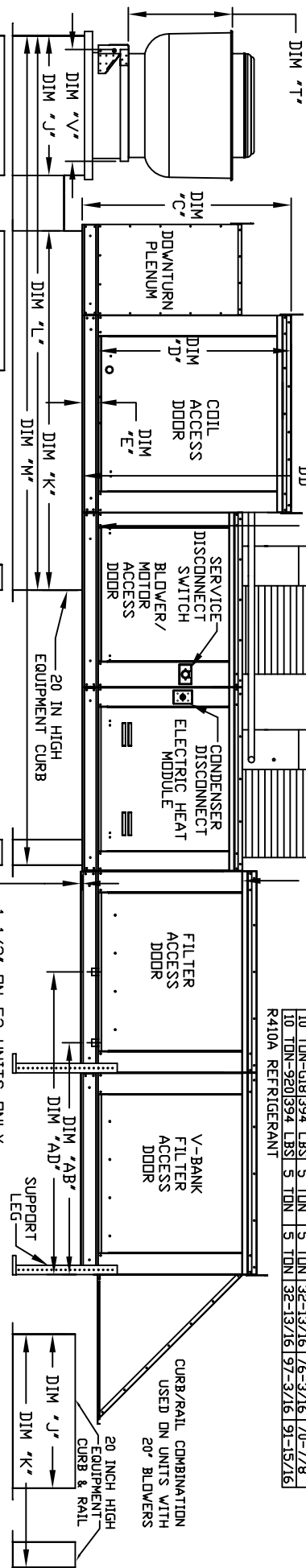


1" NPT CONNECTION FOR SS PITCHED DRAIN PAN

48 IN CLEARANCE REQUIRED ABOVE CONDENSERS

CONDENSER INFORMATION							
MODEL	WEIGHT*	#1	TONNAGE #2	CC	DD	EE	REFRIGERANT
2 TON-G10	119 LBS	2 TON	N/A	26-5/16	56-1/16	52-3/8	
3 TON-G10	134 LBS	3 TON	N/A	33-5/16	63-1/16	59-3/8	
5 TON-G10	197 LBS	2.5 TON	2.5 TON	32-13/16	62-9/16	58-7/8	
5 TON-G10	197 LBS	5 TON	N/A	32-13/16	69-9/16	65-7/8	
7.5 TON-G15	348 LBS	2.5 TON	5 TON	32-13/16	69-9/16	65-7/8	
8 TON-G15	331 LBS	3 TON	5 TON	33-5/16	71-11/16	68	
10 TON-G15	394 LBS	5 TON	5 TON	32-13/16	69-9/16	65-7/8	
10 TON-G18	394 LBS	5 TON	5 TON	32-13/16	76-3/16	70-7/8	
10 TON-G20	394 LBS	5 TON	5 TON	32-13/16	91-13/16		
R410A	REFRIGERANT						

\*\*\*9 INCH HIGH EXHAUST ADAPTER MAY BE REQUIRED



20 INCH HIGH EQUIPMENT CURB & RAIL

20 IN HIGH EQUIPMENT CURB

1-1/2" DN E2 UNITS ONLY

CURB/RAIL COMBINATION USED ON UNITS WITH 20" BLOWERS

EXHAUST UNIT DIMENSIONS			
MODEL #	T	U	V ***
B012	14-1/2	22	19
B011	18-1/2	27-1/4	21
B013	21-1/2	30-1/4	21
B015	23	33-3/4	24-3/4
B016	23-1/2	36-7/8	28
B018	29-1/2	38-7/8	28
B019	30-5/8	43-3/8	33
B0130	33-1/2	52-3/4	40

UNIT DIMENSIONS		CURB/RAIL											DISCHARGE OPENING		WATER INLET		DRAIN OPENING		FILTER SIZE & QTY	
MODEL	A	B	C	D	E	F	J	K	L	M	N	P	R	S	AA	AB	AC	AD	AE	AF
E1-G10	199-1/2	39-3/8	42-3/4	39	3-3/4	30-5/16	21	71	106	166-5/8	3-9/16	13-7/8	36-13/16	11-1/2	4-1/2	38-1/2	20	48-1/4	16x20x2 (6)	16x20x2 (6)
E2-G15	229-1/2	49-3/8	47-3/4	44	3-3/4	34-3/16	31	79	124	190-5/8	4-5/16	22-3/8	46-9/16	18	4-1/2	44	20	57-1/4	20x25x2 (8)	20x25x2 (8)
E3-G18	224-3/4	54-3/8	56-3/8	51-1/8	5-1/4	47-1/4	35	84	133	199-5/8	6-5/16	22-3/8	49-1/2	18	4-1/2	41-1/8	23-1/2	52-1/8	16x20x2 (5)	16x20x2 (5)
E4-G20	273-5/16	64-3/8	64-3/8	59-1/8	5-1/4	49-5/8	42	115-3/16	171-3/16	255-7/8	5-1/4	31-1/2	56-13/16	23-1/2	4-1/2	41-1/8	28-7/8	52-7/8	20x25x2 (12)	20x25x2 (12)

### UNIT INFORMATION

MODEL	TONNAGE RANGE		CURB/RAIL COMBINATION USED ON UNITS WITH 20" BLOWERS		TOTAL WEIGHT	HELEX EVAPORATIVE COOLING UNIT	
	MIN	MAX	MIN	MAX		WATER SIZE & QTY	NOZZLES
E1-G10	2 TON	5 TON	1285 LBS	25"x32"x42"	28	20	6.5 GPM
E2-G15	5 TON	10 TON	1720 LBS	30"x36"x42"	28	20	8.4 GPM
E3-G18	10 TON	10 TON	2165 LBS	36"x43"x42"	35	35	10.5 GPM
E4-G20	10 TON	10 TON	3210 LBS	45"x54"x42"	42	42	12.6 GPM

MAX CONDENSING UNIT WEIGHT TO WEIGHT IN TABLE ABOVE

MAX EVAP WTR PRESSURE = 50 PSI @ 70 DEG F

ALL DIMENSIONS ARE NOMINAL AND GIVEN IN INCHES.

© 2015 YORK INTERNATIONAL, A YORK COMPANY. YORK INTERNATIONAL