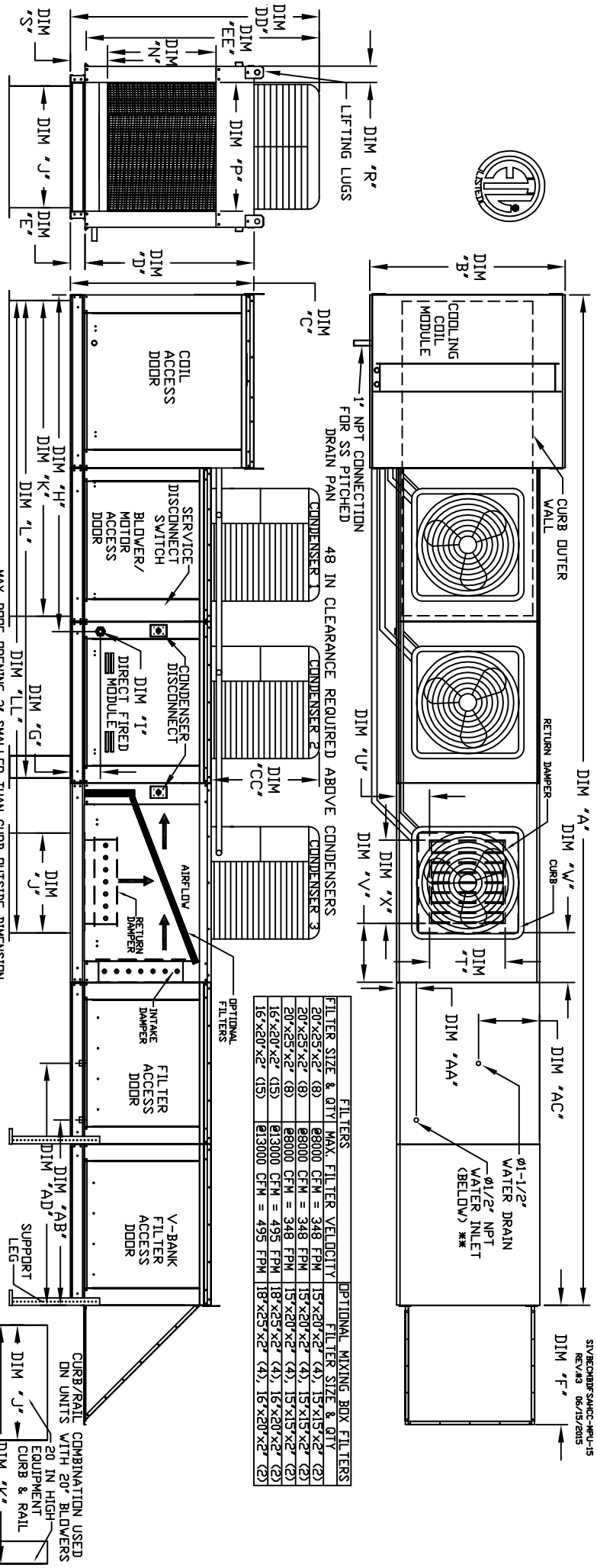


MODULAR OUTDOOR SIDE DISCHARGE DIRECT FIRED RECIRCULATING HEATER WITH COOLING, EVAPORATIVE COOLER INTAKE, V-BANK AND SCREEN INTAKE

REV#3 06/15/2015



FILTERS

FILTER SIZE & QTY	MAX. FILTER VELOCITY	OPTIONAL MIXING BOX FILTERS
20"x25"x2" (8)	8000 CFM = 348 FPM	15"x20"x2" (4), 15"x15"x2" (2)
30"x25"x2" (8)	8000 CFM = 348 FPM	15"x20"x2" (4), 15"x15"x2" (2)
16"x20"x2" (15)	8000 CFM = 348 FPM	15"x20"x2" (4), 15"x15"x2" (2)
16"x20"x2" (15)	813000 CFM = 495 FPM	18"x20"x2" (4), 16"x20"x2" (2)

ALL DIMENSIONS ARE NOMINAL AND GIVEN IN INCHES.

MODEL	A	B	C	D	E	F	G	H	J	K	L	M	N	P	R	S	T	U	V	X	AA	AB	AC	AD
D-500-G18	248-3/8	54-3/8	56-3/8	51-1/8	5-1/4	34-3/16	9-1/2	90-1/16	35	84	126-1/4	203-15/16	29-5/8	30	11-1/2	7-3/8	28	8	7	30	4-1/2	44	20	57-1/4
D-750-G18	248-3/8	54-3/8	56-3/8	51-1/8	5-1/4	34-3/16	9-1/2	90-1/16	35	84	126-1/4	203-15/16	29-5/8	30	11-1/2	7-3/8	28	8	7	30	4-1/2	44	20	57-1/4
D-1000-G18	248-3/8	54-3/8	56-3/8	51-1/8	5-1/4	34-3/16	9-1/2	90-1/16	35	84	126-1/4	203-15/16	29-5/8	30	11-1/2	7-3/8	28	8	7	30	4-1/2	44	20	57-1/4
D-1500-G20	297-7/8	60-7/16	64-3/8	59-1/8	5-1/4	47-1/4	13-9/16	120-5/8	42	115-3/16	169-1/2	292-7/8	36-3/4	34	12-1/2	7-3/8	33	10	11	36	4-1/2	41-1/8	23-1/2	52-7/8

UNIT INFORMATION

MODEL	BURNER LENGTH	BTU RANGE (AMB)	GAS PRESSURE	GAS CONNECTION	TONNAGE RANGE	MIN	MAX	TOT. WEIGHT	MEDIA SIZE & QTY	VEL. @ MAX. GPM/INCHES	MAX. FLOW RATE	TOT. WEIGHT	MEDIA SIZE & QTY	VEL. @ MAX. GPM/INCHES	MAX. FLOW RATE		
D-500-G18	12"	18	350	1/2" WC	14" WC	15 TON	15 TON	2120 LBS	20"x25"x2" (8)	348 FPM	14	7 GPH	2110 LBS	30"x36"x12"	1067 FPM	28	8.4 GPH
D-750-G18	18"	27.5	825	1/2" WC	14" WC	15 TON	15 TON	2130 LBS	20"x25"x2" (8)	348 FPM	14	7 GPH	2120 LBS	30"x36"x12"	1067 FPM	28	8.4 GPH
D-1000-G18	24"	36.6	1100	1/2" WC	14" WC	15 TON	15 TON	3345 LBS	16"x20"x2" (15)	572 FPM	24	12 GPH	3315 LBS	38"x43"x12"	1322 FPM	35	10.15 GPH
D-1500-G20	30"	45.8	1375	1/2" WC	14" WC	15 TON	15 TON	3360 LBS	16"x20"x2" (15)	572 FPM	24	12 GPH	3330 LBS	38"x43"x12"	1322 FPM	35	10.15 GPH

CONDENSER INFORMATION

MODEL	WEIGHT*	#1 TONNAGE	#2 TONNAGE	#3 TONNAGE	CC	DD	EE
15 TON-G18 BSI	5 TON	5 TON	5 TON	5 TON	32-13/16	76-3/16	70-7/8
15 TON-G20 BSI	5 TON	5 TON	5 TON	5 TON	32-13/16	97-3/16	91-15/16

Direct Fired Profile Burner Specifications:

Application: Direct fired burners shall have patented US Patent No. US6695232B2, self-adjusting profile plates designed to ensure proper air velocity and pressure drop across the burner. Profile plates shall be made of 304 stainless steel and shall be finished with a passivation level to a minimum of 90% of carbon monoxide (CO), and 0.5ppm of nitrogen dioxide (NO2).

General Construction: Burner profile plates shall be included in the burner listing and comply with the requirements of a fresh air stream, without the need for any motors or actuators to mechanically adjust them. With this feature, all DF units are designed for demand control ventilation (DCV) requirements.

Certifications: All profile plate assemblies shall be included in the burner listing and comply with combined ASHRAE 90.1 and ASHRAE 62.1 and ASHRAE 155 and ASHRAE 154 and ASHRAE 153 and ASHRAE 152 and ASHRAE 151 and ASHRAE 150 and ASHRAE 149 and ASHRAE 148 and ASHRAE 147 and ASHRAE 146 and ASHRAE 145 and ASHRAE 144 and ASHRAE 143 and ASHRAE 142 and ASHRAE 141 and ASHRAE 140 and ASHRAE 139 and ASHRAE 138 and ASHRAE 137 and ASHRAE 136 and ASHRAE 135 and ASHRAE 134 and ASHRAE 133 and ASHRAE 132 and ASHRAE 131 and ASHRAE 130 and ASHRAE 129 and ASHRAE 128 and ASHRAE 127 and ASHRAE 126 and ASHRAE 125 and ASHRAE 124 and ASHRAE 123 and ASHRAE 122 and ASHRAE 121 and ASHRAE 120 and ASHRAE 119 and ASHRAE 118 and ASHRAE 117 and ASHRAE 116 and ASHRAE 115 and ASHRAE 114 and ASHRAE 113 and ASHRAE 112 and ASHRAE 111 and ASHRAE 110 and ASHRAE 109 and ASHRAE 108 and ASHRAE 107 and ASHRAE 106 and ASHRAE 105 and ASHRAE 104 and ASHRAE 103 and ASHRAE 102 and ASHRAE 101 and ASHRAE 100 and ASHRAE 99 and ASHRAE 98 and ASHRAE 97 and ASHRAE 96 and ASHRAE 95 and ASHRAE 94 and ASHRAE 93 and ASHRAE 92 and ASHRAE 91 and ASHRAE 90 and ASHRAE 89 and ASHRAE 88 and ASHRAE 87 and ASHRAE 86 and ASHRAE 85 and ASHRAE 84 and ASHRAE 83 and ASHRAE 82 and ASHRAE 81 and ASHRAE 80 and ASHRAE 79 and ASHRAE 78 and ASHRAE 77 and ASHRAE 76 and ASHRAE 75 and ASHRAE 74 and ASHRAE 73 and ASHRAE 72 and ASHRAE 71 and ASHRAE 70 and ASHRAE 69 and ASHRAE 68 and ASHRAE 67 and ASHRAE 66 and ASHRAE 65 and ASHRAE 64 and ASHRAE 63 and ASHRAE 62 and ASHRAE 61 and ASHRAE 60 and ASHRAE 59 and ASHRAE 58 and ASHRAE 57 and ASHRAE 56 and ASHRAE 55 and ASHRAE 54 and ASHRAE 53 and ASHRAE 52 and ASHRAE 51 and ASHRAE 50 and ASHRAE 49 and ASHRAE 48 and ASHRAE 47 and ASHRAE 46 and ASHRAE 45 and ASHRAE 44 and ASHRAE 43 and ASHRAE 42 and ASHRAE 41 and ASHRAE 40 and ASHRAE 39 and ASHRAE 38 and ASHRAE 37 and ASHRAE 36 and ASHRAE 35 and ASHRAE 34 and ASHRAE 33 and ASHRAE 32 and ASHRAE 31 and ASHRAE 30 and ASHRAE 29 and ASHRAE 28 and ASHRAE 27 and ASHRAE 26 and ASHRAE 25 and ASHRAE 24 and ASHRAE 23 and ASHRAE 22 and ASHRAE 21 and ASHRAE 20 and ASHRAE 19 and ASHRAE 18 and ASHRAE 17 and ASHRAE 16 and ASHRAE 15 and ASHRAE 14 and ASHRAE 13 and ASHRAE 12 and ASHRAE 11 and ASHRAE 10 and ASHRAE 9 and ASHRAE 8 and ASHRAE 7 and ASHRAE 6 and ASHRAE 5 and ASHRAE 4 and ASHRAE 3 and ASHRAE 2 and ASHRAE 1.