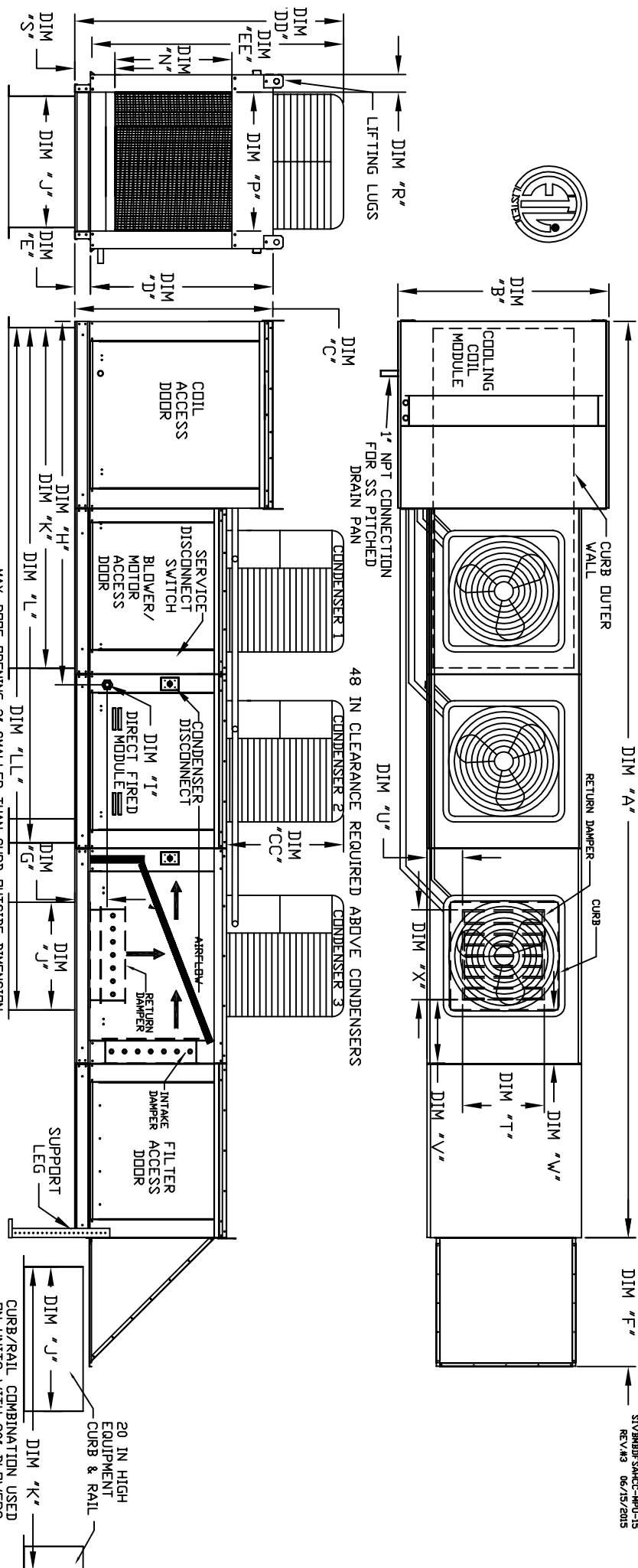


MODULAR OUTDOOR SIDE DISCHARGE DIRECT FIRED RECIRCULATING HEATER WITH COOLING, V-BANK AND SCREEN INTAKE

STV3BDF3AHCC-HPU-15
REV A3 06/15/2015



ALL DIMENSIONS ARE NOMINAL AND GIVEN IN INCHES.

MAX. ROOF OPENING 2" SMALLER THAN CURB OUTSIDE DIMENSION

| MODEL | UNIT DIMENSIONS | | | | | | | | | | | | CURB/RAIL | | DISCHARGE OPENING | | RETURN OPENING | | | | | |
|------------|-----------------|---------|---------|--------|--------|-------|---------|---------|---------|----|----------|---------|-----------|--------|-------------------|--------|----------------|----|----|----|-------|----|
| | A | B | C | D | E | F | G | H | J | K | L | LL | N | P | R | S | T | U | V | W | X | |
| D-500-G18 | 1880 | 210-1/8 | 54-3/8 | 56-3/8 | 51-1/8 | 5-1/4 | 34-3/16 | 9-1/2 | 90-1/16 | 35 | 84 | 126-1/4 | 165-11/16 | 29-5/8 | 30 | 11-1/2 | 7-3/8 | 28 | 8 | 7 | 4-1/2 | 30 |
| D-750-G18 | 1885 | 210-1/8 | 54-3/8 | 56-3/8 | 51-1/8 | 5-1/4 | 34-3/16 | 9-1/2 | 90-1/16 | 35 | 84 | 126-1/4 | 165-11/16 | 29-5/8 | 30 | 11-1/2 | 7-3/8 | 28 | 8 | 7 | 4-1/2 | 30 |
| D-1000-G18 | 1890 | 210-1/8 | 54-3/8 | 56-3/8 | 51-1/8 | 5-1/4 | 34-3/16 | 9-1/2 | 90-1/16 | 35 | 84 | 126-1/4 | 165-11/16 | 29-5/8 | 30 | 11-1/2 | 7-3/8 | 28 | 8 | 7 | 4-1/2 | 30 |
| D-1000-920 | 3015 | 262-1/2 | 60-7/16 | 64-3/8 | 59-1/8 | 5-1/4 | 47-1/4 | 13-9/16 | 120-5/8 | 42 | 115-3/16 | 169-1/2 | 217-1/2 | 36-3/4 | 34 | 12-1/2 | 7-3/8 | 33 | 10 | 11 | 8 | 36 |
| D-1500-920 | 3030 | 262-1/2 | 60-7/16 | 64-3/8 | 59-1/8 | 5-1/4 | 47-1/4 | 13-9/16 | 120-5/8 | 42 | 115-3/16 | 169-1/2 | 217-1/2 | 36-3/4 | 34 | 12-1/2 | 7-3/8 | 33 | 10 | 11 | 8 | 36 |

UNIT INFORMATION:

| MODEL | BTU RANGE (MBH) | | | GAS PRESSURE | | GAS CONNECTION | TONNAGE RANGE | | FILTERS | | OPTIONAL MIXING BOX FILTERS | |
|------------|-----------------|---------|----------|--------------|--------|----------------|---------------|--------|-------------------|----------------------|--------------------------------|-----------------|
| | BURNER LENGTH | BTU LOW | BTU HIGH | MIN | MAX | | MIN | MAX | FILTER SIZE & QTY | MAX. FILTER VELOCITY | FILTER SIZE & QTY | FILTER VELOCITY |
| D-500-G18 | 12' | 18 | 550 | 7" WC | 14" WC | 1 | 15 Ton | 15 Ton | 20"x25"x2" (8) | 8000 CFM = 348 FPM | 15"x20"x2" (4), 15"x15"x2" (2) | 495 FPM |
| D-750-G18 | 18' | 27.5 | 825 | 7" WC | 14" WC | 1 | 15 Ton | 15 Ton | 20"x25"x2" (8) | 8000 CFM = 348 FPM | 15"x20"x2" (4), 15"x15"x2" (2) | 495 FPM |
| D-1000-G18 | 24' | 36.6 | 1100 | 7" WC | 14" WC | 1 | 15 Ton | 15 Ton | 20"x25"x2" (8) | 8000 CFM = 348 FPM | 15"x20"x2" (4), 15"x15"x2" (2) | 495 FPM |
| D-1000-920 | 24' | 36.6 | 1100 | 7" WC | 5 PSI | 1-1/4 | 15 Ton | 15 Ton | 16"x20"x2" (15) | 495 FPM | 18"x25"x2" (4), 16"x20"x2" (2) | 495 FPM |
| D-1500-920 | 30' | 45.8 | 1375 | 7" WC | 5 PSI | 1-1/4 | 15 Ton | 15 Ton | 16"x20"x2" (15) | 495 FPM | 18"x25"x2" (4), 16"x20"x2" (2) | 495 FPM |

CONDENSER INFORMATION:

| MODEL | CONDENSER INFORMATION | | | CC | DD | EE |
|------------|-----------------------|-------|-------|----------|---------|----------|
| | WEIGHT* | #1 | #2 | | | |
| 15 TON-G18 | 591 LBS | 5 TON | 5 TON | 32-13/16 | 76-3/16 | 70-7/8 |
| 15 TON-920 | 591 LBS | 5 TON | 5 TON | 32-13/16 | 97-3/16 | 91-15/16 |
| 2410A | REFRIGERANT | | | | | |

CONDENSER INFORMATION:

Direct Fired Profile Plate Specifications:

Description: Direct fired burners shall have patented US Patent No. US6629532B2, self-adjusting profile plate design. The profile plate design allows for the burner to operate at a variety of gas pressures and flow rates. The profile plates shall allow burners to achieve clean combustion by limiting by-product levels to a maximum of 5ppm of carbon monoxide (CO), and 50ppm of nitrogen dioxide (NO2).

Application: Spring-loaded burner profile plates are engineered to automatically react to the momentum of a fresh air stream, without the need for any motors or actuators to mechanically adjust them. With this feature, all DF units are designed for demand control ventilation (DCV) requirements.

Certifications: All profile plate assemblies shall be included in the DF unit's ETL listing and comply with combined safety standards ANSI Z83.4 and CSA 3.7 (non-recirculating DF heaters) and ANSI Z83.18 (recirculating DF heaters).

General Construction: Profile plates shall be formed from G90 galvanized steel. Profile plates shall vary in size per unit. Profile plates shall be mounted along the same plane as the discharge of the burner. Design shall incorporate properly torqued, permanently mounted spring hinges.

Direct Fired (DF) Profile Plate Assembly