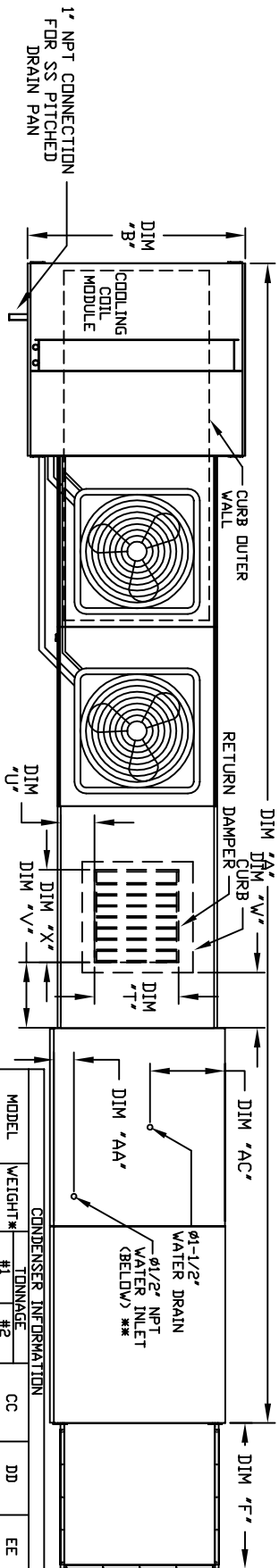


MODULAR OUTDOOR SIDE DISCHARGE ELECTRIC HEATER PACKAGED UNIT WITH COOLING, MIXING BOX, EVAPORATIVE COOLER INTAKE, V-BANK AND SCREEN INTAKE

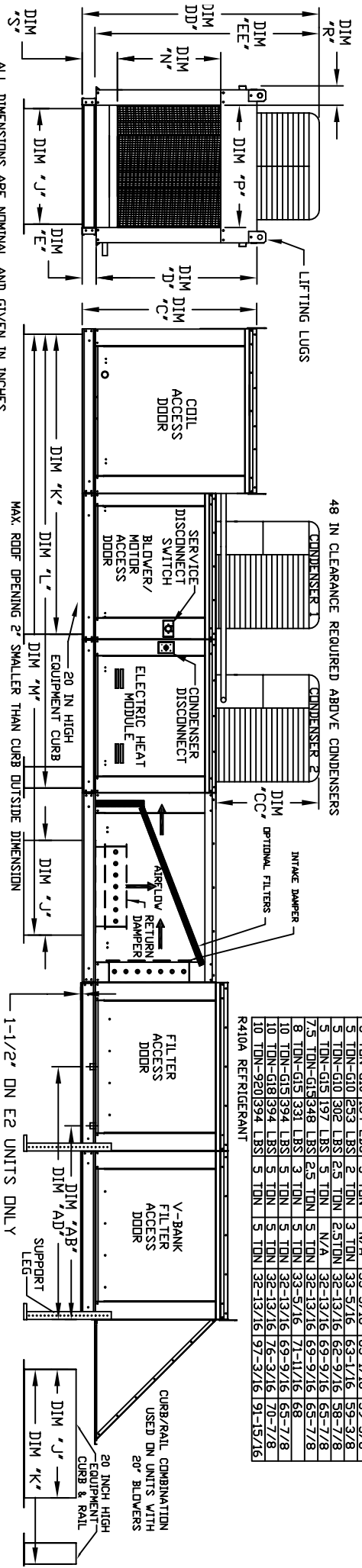
STYLE/DESCRIPTION: R410A
REV: A/E 06/15/2015



48 IN CLEARANCE REQUIRED ABOVE CONDENSERS

MODEL	WEIGHT #	TONNAGE	CC	DD	EE
2 TON-G10	119 LBS	2 TON	26-5/16	56-1/16	52-3/8
3 TON-G10	134 LBS	3 TON	33-5/16	63-1/16	59-3/8
5 TON-G10	253 LBS	2 TON	N/A	33-5/16	59-3/8
5 TON-G10	302 LBS	2.5 TON	31-1/2	62-9/16	58-7/8
5 TON-G10	197 LBS	5 TON	N/A	32-13/16	65-7/8
7.5 TON-G15	348 LBS	2.5 TON	32-13/16	69-9/16	65-7/8
8 TON-G15	331 LBS	3 TON	33-5/16	71-1/16	68
10 TON-G19	394 LBS	5 TON	32-13/16	69-9/16	65-7/8
10 TON-G18	394 LBS	5 TON	32-13/16	76-3/16	70-7/8
10 TON-G20	394 LBS	5 TON	32-13/16	97-3/16	91-15/16

R410A REFRIGERANT



MAX. ROOF OPENING 2" SMALLER THAN CURB OUTSIDE DIMENSION

1-1/2" ON E2 UNITS ONLY

CURB/RAIL COMBINATION USED ON UNITS WITH 20" BLOWERS

ALL DIMENSIONS ARE NOMINAL AND GIVEN IN INCHES.

MODEL	A	B	C	D	E	F	G	H	I	J	K	L	M	N	P	R	S	T	U	V	W	X	AA	AB	AC	AD	AE	
E1-G10	223-3/8	39-3/8	42-3/4	39	3-3/4	30-5/16	21	71	113-1/4	176-15/16	17-1/2	16	11	5-3/4	14	8	14	12-1/2	18	4-1/2	38-1/2	18	48-1/4	16-x20-x2" (B)	57-1/4	20-x25-x2" (B)	57-1/4	20-x25-x2" (B)
E2-G15	243-3/8	49-3/8	47-3/4	44	3-3/4	34-3/16	31	79	121-1/4	189-15/16	29-3/4	12-1/2	11	5-3/4	14	8	14	12-1/2	24	4-1/2	44	20	57-1/4	20-x25-x2" (B)	57-1/4	20-x25-x2" (B)	57-1/4	20-x25-x2" (B)
E3-G18	242-5/8	54-3/8	51-1/8	44	3-3/4	34-3/16	31	84	126-1/4	203-15/16	29-5/8	12-1/2	11	5-3/4	14	8	14	12-1/2	30	4-1/2	44	20	57-1/4	20-x25-x2" (B)	57-1/4	20-x25-x2" (B)	57-1/4	20-x25-x2" (B)
E4-920	297-7/8	60-7/16	56-3/8	59-1/8	5-1/4	49-5/8	42	115-3/16	169-1/2	252-13/16	36-3/4	34	12-1/2	7-3/8	33	10	11	8	36	4-1/2	41-1/8	18	52-7/8	16-x20-x2" (D)	52-7/8	16-x20-x2" (D)	52-7/8	16-x20-x2" (D)

UNIT INFORMATION

MODEL	TONNAGE RANGE	MIN	MAX	TOT. WEIGHT MEDIA SIZE & QTY	NOZZLES	MAX. FLOW RATE
E1-G10	2 Ton	5 Ton	1360 LBS	25-x22-x12"	20	6.5 GPH
E2-G15	3 Ton	10 Ton	1830 LBS	30-x36-x12"	28	8.4 GPH
E3-G18	5 Ton	10 Ton	2305 LBS	38-x43-x12"	35	10.15 GPH
E4-920	10 Ton	10 Ton	3495 LBS	45-x54-x12"	42	12.6 GPH

OPTIONAL MIXING BOX FILTERS

FILTER SIZE & QTY	DISCHARGE OPENING	RETURN DAMPER OPENING	WATER INLET DRAIN OPENING	FILTER SIZE & QTY
10-x16-x2" (5)	16-x15-x2" (2)	16-x15-x2" (1)	15-x20-x2" (4)	15-x15-x2" (2)
15-x20-x2" (4)	15-x15-x2" (2)	15-x15-x2" (2)	18-x25-x2" (4)	18-x25-x2" (2)

20 INCH HIGH EQUIPMENT CURB & RAIL