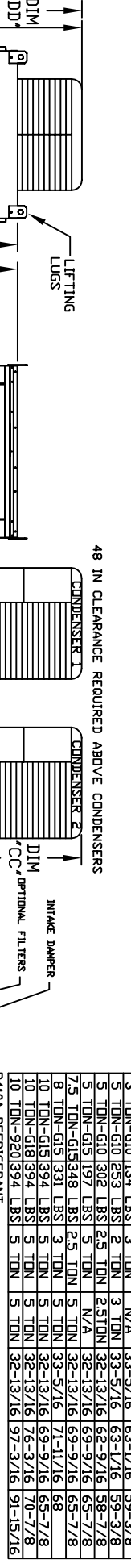
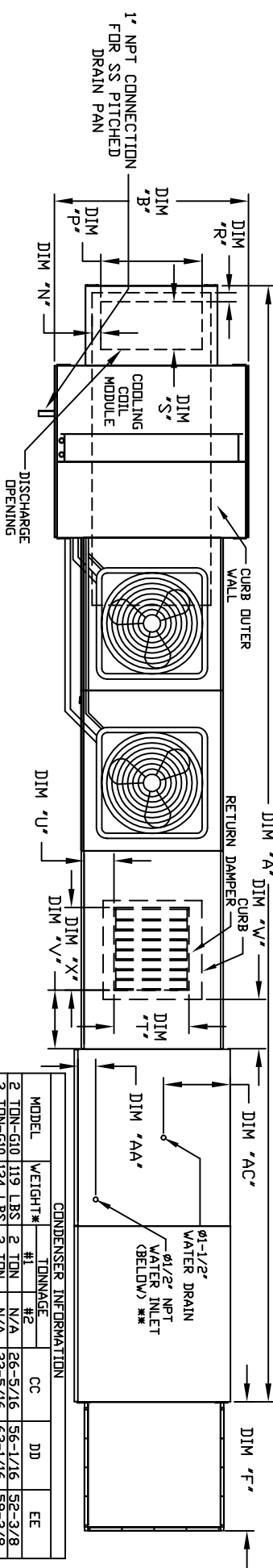
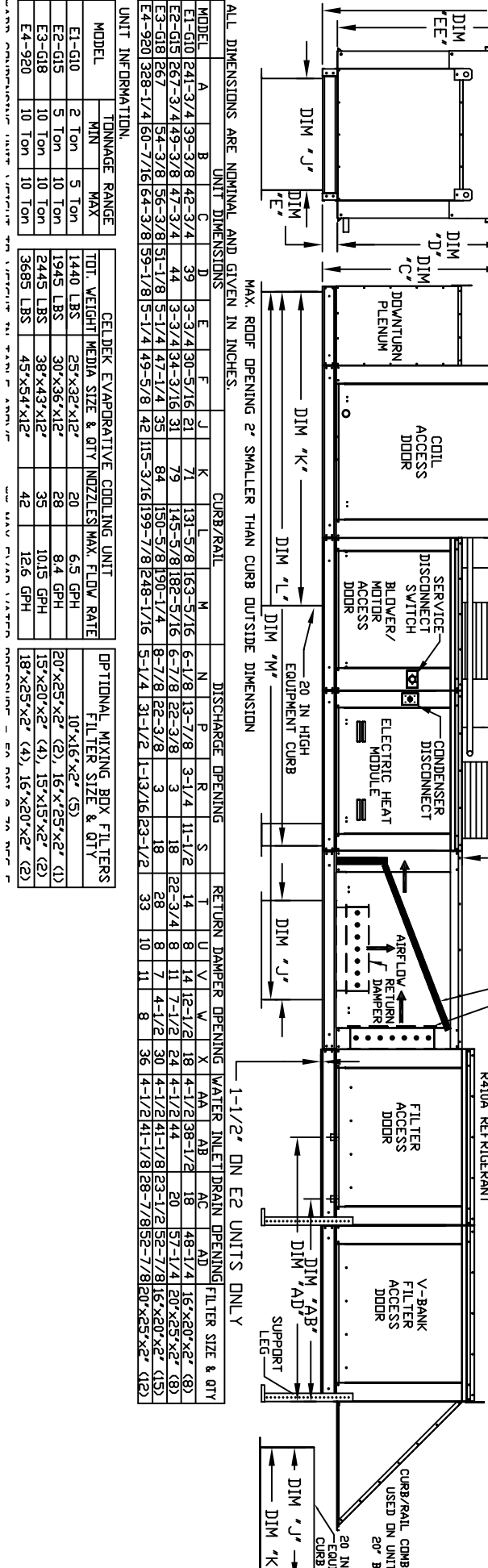


MODULAR OUTDOOR DOWN DISCHARGE ELECTRIC HEATER PACKAGED UNIT WITH COOLING, MIXING BOX, LPD EVAPORATIVE COOLER INTAKE, V-BANK AND INTAKE HOOD

HPV01PCHS3SACCP-HPJ
REV#2 06/15/2015



MODEL	WEIGHT*	#1 TONNAGE	#2 TONNAGE	CC	DD	EE
2 TON-G10 119 LBS	2 TON	N/A	26-5/16	56-1/16	52-3/8	
3 TON-G10 134 LBS	3 TON	N/A	33-5/16	63-1/16	59-3/8	
5 TON-G10 253 LBS	2 TON	3	33-5/16	63-1/16	59-3/8	
5 TON-G10 302 LBS	2.5 TON	2.5 TON	32-13/16	62-9/16	58-7/8	
5 TON-G15 197 LBS	5 TON	N/A	32-13/16	69-9/16	65-7/8	
7.5 TON-G15 348 LBS	2.5 TON	5 TON	32-13/16	69-9/16	65-7/8	
8 TON-G15 331 LBS	3 TON	5 TON	33-5/16	71-11/16	68	
10 TON-G15 394 LBS	5 TON	5 TON	32-13/16	69-9/16	65-7/8	
10 TON-G18 394 LBS	5 TON	5 TON	32-13/16	76-3/16	70-7/8	
10 TON-920 394 LBS	5 TON	5 TON	32-13/16	97-3/16	91-5/16	



ALL DIMENSIONS ARE NOMINAL AND GIVEN IN INCHES.

MODEL	A	B	C	D	E	F	J	K	L	M	N	P	R	S	T	U	V	X	AA	AB	AC	AD
E1-G10 241-3/4	39	3-3/4	30-5/16	21	71	131	5-7/8	163	5-1/6	6-1/8	13-7/8	3-1/4	11-1/2	14	8	14	12-1/2	18	4-1/2	38-1/2	18	48-1/4
E2-G15 267-3/4	44	3-3/4	34-3/16	31	79	145	5-7/8	182	5-1/6	6-7/8	15-3/8	3	18	22-3/4	8	14	1-1/2	24	4-1/2	44	20	57-1/4
E3-G18 267	44	3-3/4	34-3/16	31	84	150	5-7/8	190	1-4	8-7/8	12-3/8	3	18	28	8	7	4-1/2	30	4-1/2	41-1/8	20	57-1/4
E4-920 328-1/4	50	7-1/6	64-3/8	31-1/8	115	185	5-7/8	248	1-1/6	5-7/4	31-1/2	3	18	33	10	11	8	36	4-1/2	41-1/8	20	57-1/4

UNIT INFORMATION:

MODEL	MIN	MAX	TONNAGE RANGE
E1-G10	2 Ton	5 Ton	1440 LBS
E2-G15	5 Ton	10 Ton	1945 LBS
E3-G18	10 Ton	10 Ton	2445 LBS
E4-920	10 Ton	10 Ton	3685 LBS

CELUDEK EVAPORATIVE COOLING UNIT:

TONNAGE	TOI. WEIGHT LBS	CELUDEK MEDIA SIZE & QTY	NOZZLES MAX. FLOW RATE
2 Ton	25	25"x32"x12"	20
5 Ton	30	30"x36"x12"	28
10 Ton	38	38"x43"x12"	35
10 Ton	45	45"x54"x12"	42

OPTIONAL MIXING BOX FILTERS:

MODEL	MIN	MAX
E1-G10	2 Ton	5 Ton
E2-G15	5 Ton	10 Ton
E3-G18	10 Ton	10 Ton
E4-920	10 Ton	10 Ton