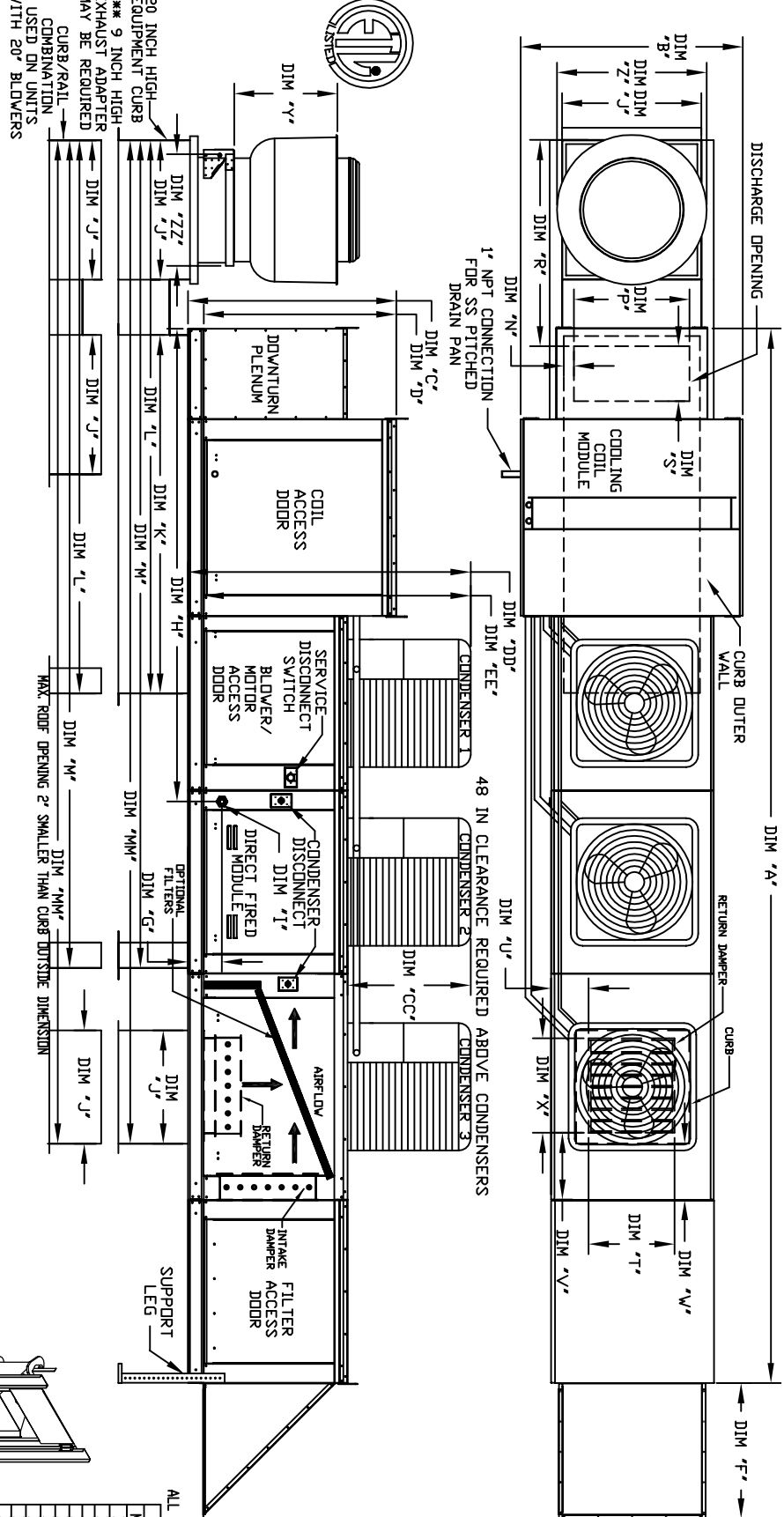


MODULAR OUTDOOR DOWN DISCHARGE DIRECT FIRED RECIRCULATING HEATER-ROOF TOP PACKAGE WITH COOLING, V-BANK AND SCREEN INTAKE

S1V8B07SACDPR1P-ML-MRU-15
REV A3 06/15/2015



ALL DIMENSIONS ARE NOMINAL AND GIVEN IN INCHES

MODEL #	EXHAUST UNIT DIMENSIONS	Y	Z	ZZ **
BDU1	14-1/2	22	19	
BDU2	18-1/2	27-1/4	21	
BDU3	21-1/2	30-1/4	21	
BDU4	23	33-3/4	24-3/4	
BDU5	23-1/2	39-3/8	28	
BDU6	29-1/2	38-7/8	28	
BDU7	30-5/8	43-3/8	33	
BDU8	33-1/2	52-3/4	40	

MODEL	WEIGHT	BU RANGE (MMB)			GAS PRESSURE (MMB)			GAS CONNECTION			TANKAGE RANGE												
		A	B	C	D	E	F	G	H	I	J	K	L										
D1500-G18	2020 LBS	234-1/2	54-3/8	56-3/8	51-1/8	5-1/4	34-3/16	9-1/2	114-7/16	35	84	133	199-5/8	239-1/16	6-5/16	22-3/8	49-1/2	18	28	8	7	4-1/2	30
D1500-G18	2025 LBS	234-1/2	54-3/8	56-3/8	51-1/8	5-1/4	34-3/16	9-1/2	114-7/16	35	84	133	199-5/8	239-1/16	6-5/16	22-3/8	49-1/2	18	28	8	7	4-1/2	30
D1000-G18	2030 LBS	234-1/2	54-3/8	56-3/8	51-1/8	5-1/4	34-3/16	9-1/2	114-7/16	35	84	133	199-5/8	239-1/16	6-5/16	22-3/8	49-1/2	18	28	8	7	4-1/2	30
D1000-G20	247 LBS	292-7/8	61-1/2	64-3/8	59-1/8	5-1/4	41-1/4	13-9/16	151	42	115-3/16	171-3/16	255-7/8	303-7/8	5-1/4	31-1/2	56-3/16	23-1/2	33	10	11	8	36
D1500-G20	3220 LBS	292-7/8	61-1/2	64-3/8	59-1/8	5-1/4	41-1/4	13-9/16	151	42	115-3/16	171-3/16	255-7/8	303-7/8	5-1/4	31-1/2	56-3/16	23-1/2	33	10	11	8	36

ADD CONDENSING UNIT WEIGHT TO WEIGHT IN TABLE ABOVE

CONDENSER INFORMATION

MODEL	WEIGHT #1	WEIGHT #2	WEIGHT #3	CC	DD	EE
D1500-G18	5 TON	5 TON	5 TON	32-13/16	76-3/16	70-7/8
D1500-G20	5 TON	5 TON	5 TON	32-13/16	97-3/16	91-15/16

BU RANGE (MMB)

MODEL	BURNER LENGTH	BU LOW	BU HIGH	MIN	MAX	7" (NPT)
D1500-G18	12"	18	550	7" VC	14" VC	15 TON
D1500-G18	18"	27.5	825	7" VC	14" VC	15 TON
D1000-G18	24"	36.6	1100	7" VC	14" VC	15 TON
D1000-G20	24"	36.6	1100	7" VC	5 PSI	15 TON
D1500-G20	30"	45.8	1375	7" VC	5 PSI	15 TON

GAS CONNECTION

MODEL	BU RANGE (MMB)	MIN	MAX
D1500-G18	15 TON	20"x20"x2" (8)	8000 CFM = 348 FPM
D1500-G18	15 TON	20"x20"x2" (8)	8000 CFM = 348 FPM
D1000-G18	15 TON	20"x20"x2" (8)	8000 CFM = 348 FPM
D1000-G20	15 TON	16"x20"x2" (15)	8000 CFM = 495 FPM
D1500-G20	15 TON	16"x20"x2" (15)	8000 CFM = 495 FPM

DISCHARGE RANGE

MODEL	MIN	MAX
D1500-G18	15 TON	20"x20"x2" (8)
D1500-G18	15 TON	20"x20"x2" (8)
D1000-G18	15 TON	20"x20"x2" (8)
D1000-G20	15 TON	16"x20"x2" (15)
D1500-G20	15 TON	16"x20"x2" (15)

OPTIONAL MIXING BOX FILTERS

MODEL	MIN	MAX
D1500-G18	15 TON	15"x15"x2" (2)
D1500-G18	15 TON	15"x15"x2" (2)
D1000-G18	15 TON	15"x15"x2" (2)
D1000-G20	15 TON	18"x20"x2" (4)
D1500-G20	15 TON	18"x20"x2" (4)

DISCHARGE OPENING

MODEL	MIN	MAX
D1500-G18	15 TON	18
D1500-G18	15 TON	18
D1000-G18	15 TON	18
D1000-G20	15 TON	28
D1500-G20	15 TON	28

RETURN DAMPER OPENING

MODEL	MIN	MAX
D1500-G18	15 TON	8
D1500-G18	15 TON	8
D1000-G18	15 TON	8
D1000-G20	15 TON	11
D1500-G20	15 TON	11

Direct Fired Profile Plate Specifications:

Direct fired burner shall have patented US Patent No. US6692923B2, self-adjusting profile plates designed to ensure proper air velocity and pressure drop across the burner. Profile plates shall allow burners to achieve clean combustion by varying the profile levels to a specific speed of rotation (RPM) and design of nitrogen dioxide (NOx).

Spring-loaded burner profile plates are engineered to automatically react to the momentum of a fresh air stream, without the need for any motors or actuators, to mechanically adjust them. With this feature, all DF units are designed for demand control ventilation (DCV) requirements.

Certification:

All profile plate assemblies shall be included in the DF unit's ETL listing and comply with combined safety standards ANSI Z89.4 and CSA 3.7 (non-recirculating DF heaters) and ANSI Z89.31 (recirculating DF heaters).

General Construction:

Profile plates shall be formed from G90 galvanized steel.

Profile plates shall be mounted along the same plane as the discharge of the burner.

Design shall incorporate properly torqued, permanently mounted spring hinges.