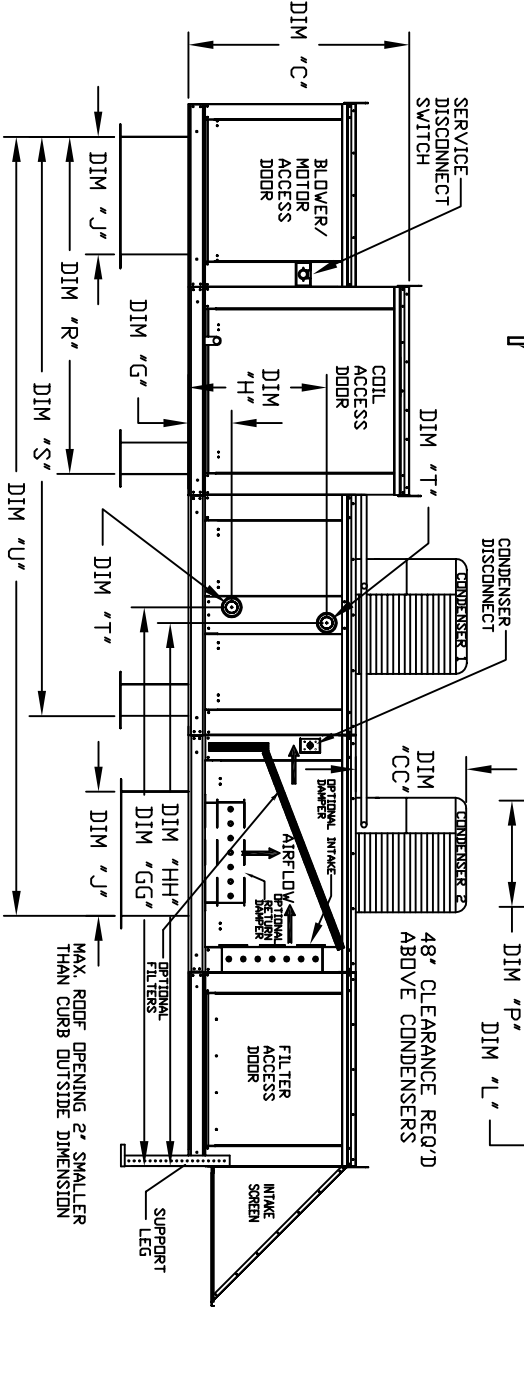
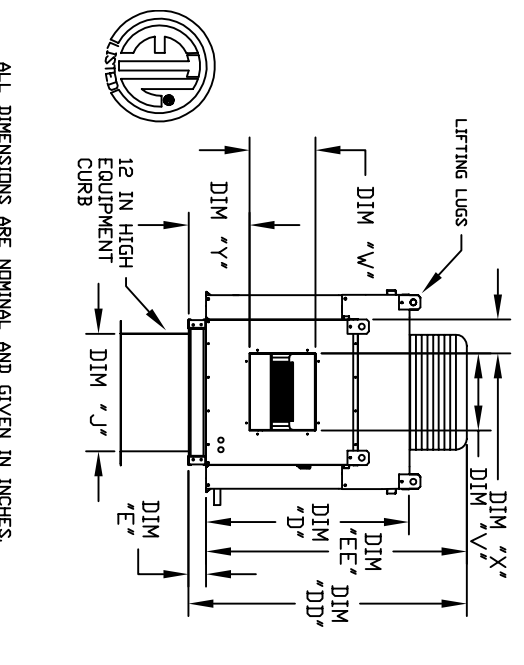
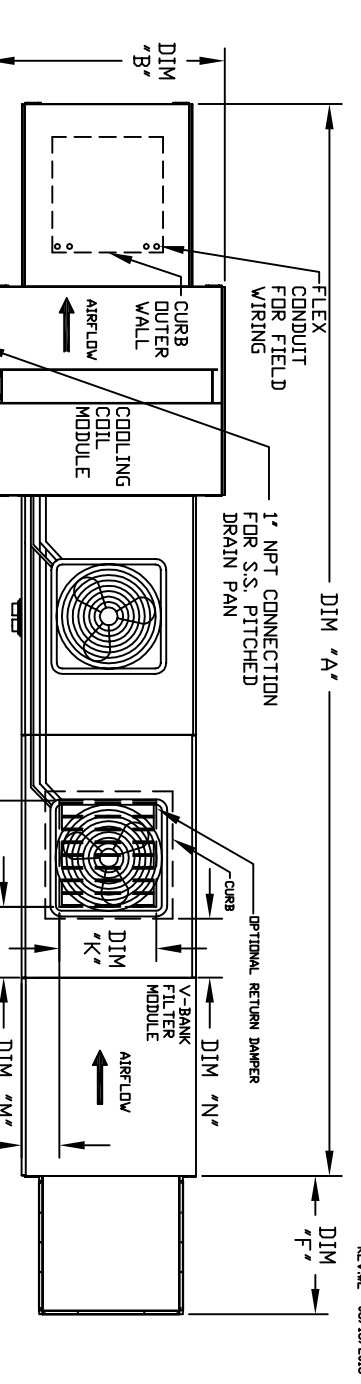


# OUTSIDE SIDE DISCHARGE MOD PACKAGE UNIT, HEATING COIL, V-BANK FILTER, SCREEN INTAKE AND OPTIONAL MIXING BOX

SMB/RHCCDAM-4RU  
REV#2 06/15/2015

CONDENSER INFORMATION

MODEL	WEIGHT*	#1	#2	CC	DD	EE
2 TON-G10 119 LBS	2 TON	N/A	26-5/16	56-1/16	52-3/8	
3 TON-G10 134 LBS	3 TON	N/A	33-5/16	63-1/16	59-3/8	
5 TON-G10 253 LBS	2 TON	3 TON	33-5/16	63-1/16	59-3/8	
5 TON-G10 302 LBS	2.5 TON	2.5 TON	32-13/16	62-9/16	58-7/8	
5 TON-G12 197 LBS	5 TON	N/A	32-13/16	69-9/16	65-7/8	
7.5 TON-G12 348 LBS	2.5 TON	5 TON	32-13/16	69-9/16	65-7/8	
10 TON-G12 394 LBS	5 TON	5 TON	32-13/16	69-9/16	65-7/8	
5 TON-G15 197 LBS	5 TON	N/A	32-13/16	69-9/16	65-7/8	
7.5 TON-G15 302 LBS	2.5 TON	5 TON	32-13/16	69-9/16	65-7/8	
8 TON-G15 331 LBS	3 TON	5 TON	33-5/16	71-11/16	68	
10 TON-G15 394 LBS	5 TON	5 TON	32-13/16	69-9/16	65-7/8	
10 TON-G18 394 LBS	5 TON	5 TON	32-13/16	76-3/16	70-7/8	
10 TON-920 394 LBS	5 TON	5 TON	32-13/16	97-3/16	91-15/16	



UNIT DIMENSIONS

MODEL	A	B	C	D	E	F	J	K	L	M	N	P	R	S	U	V	V	X	Y	MIN	MAX
G10	191-1/8	39-3/8	42-3/4	39	3-3/4	22-3/8	21	14	8	14	12-1/2	18	65-13/16	107-15/16	140-7/8	13-1/4	11-1/2	6-3/8	11-7/8	2 Ton	5 Ton
G12	199-1/8	49-3/8	47-3/4	44	3-3/4	30-5/16	31	22-3/4	8	11	7-1/2	24	74-5/8	116-3/4	154-7/8	15-3/4	13-9/16	10-1/8	13-1/16	5 Ton	10 Ton
G15	199-1/8	49-3/8	47-3/4	44	3-3/4	30-5/16	31	22-3/4	8	11	7-1/2	24	74-5/8	116-3/4	154-7/8	15-3/4	13-9/16	10-1/8	13-1/16	5 Ton	10 Ton
G18	214-1/8	54-3/8	56-3/8	51-1/8	5-1/4	34-3/16	35	28	8	7	4-1/2	30	79-3/16	121-5/16	162-3/8	22	19	9	17-7/8	10 Ton	10 Ton
920	281-7/16	60-7/16	64-3/8	59-1/8	5-1/4	47-1/4	42	33	10	11	8	36	104-9/32	158-15/32	208	24-7/8	24-7/8	11-1/16	19-1/8	10 Ton	10 Ton

RETURN OPENING

DISCHARGE OPENING

TONNAGE RANGE

HOT WATER COIL MODULE

MODEL	WEIGHT*	(KWH)	PIPE CONNECTION	STEAM
G10	995 LBS	165.63	2	5
G12	1385 LBS	320.88	2	5
G15	1395 LBS	320.88	2	5
G18	1695 LBS	514.97	2-1/2	5
920	2760 LBS	831.87	2-1/2	5

STEAM COIL MODULE

MODEL	WEIGHT*	(KWH)	PIPE CONNECTION	STEAM
G10	995 LBS	176.49	2-1/2	5
G12	1385 LBS	328.19	2-1/2	5
G15	1395 LBS	328.19	2-1/2	5
G18	1690 LBS	505.64	2	