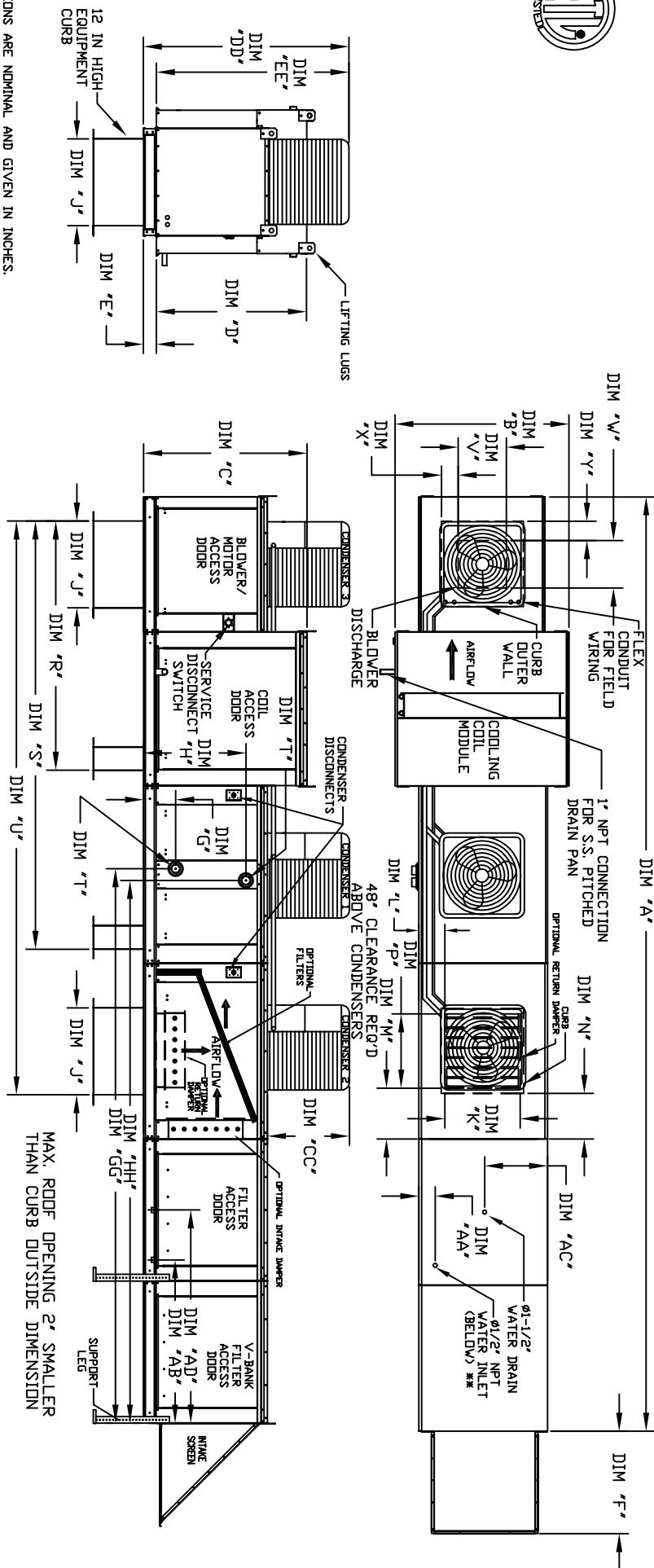




OUTSIDE DOWN DISCHARGE MOD PACKAGE UNIT, HEATING COIL, V-BANK FILTER, EVAPORATIVE COOLER INTAKE, SCREEN INTAKE AND OPTIONAL MIXING BOX

SYBEC000004-15
REV. A 06/15/2015



LL DIMENSIONS ARE NOMINAL AND GIVEN IN INCHES.

MODEL	UNIT DIMENSIONS											DISCHARGE OPENING											TONNAGE RANGE			WATER INLET DRAIN OPENING		
	A	B	C	D	E	F	J	K	L	M	N	P	R	S	U	V	W	X	Y	MIN	MAX	AA	AB	AC	AD			
G18	248-3/8	54-3/8	56-3/8	51-1/8	5-1/4	34-3/16	35	28	8	7	4-1/2	30	79-3/16	121-5/16	162-3/8	22	19	6-1/2	7	15 Ton	15 Ton	4-1/2	44	20	57-1/4			
920	297-7/8	60-7/16	64-3/8	59-1/8	5-1/4	47-1/4	42	10	11	8	36	104-9/32	158-15/32	208	24-7/8	24-7/8	8-9/16	1-1/8	15 Ton	15 Ton	4-1/2	41-1/8	23-1/2	52-7/8				

MODEL	TOTAL CAPACITY		PIPE CONNECTION		STEAM COIL MODULE		TOTAL CAPACITY		PIPE CONNECTION		STEAM		TOTAL CAPACITY		PIPE CONNECTION		STEAM		
	(QBH)	(QBH)	"T (NPT)	(NPT)	(QBH)	(QBH)	(QBH)	(QBH)	"T (NPT)	(NPT)	(QBH)	(QBH)	(QBH)	(QBH)	"T (NPT)	(NPT)	(QBH)	(QBH)	
G18	514.97	514.97	1-1/2	1-1/2	9-1/2	140-15/16	38	138-11/16	1-1/2	1-1/2	5	10-1/4	139-13/16	23-5/8	139-13/16	1-1/2	1-1/2	139-13/16	139-13/16
920	831.87	831.87	2-1/2	2-1/2	10	153-5/8	45-1/2	150	2-1/2	2-1/2	5	10-1/4	152-3/16	28-5/8	152-3/16	2-1/2	2-1/2	152-3/16	152-3/16

MODEL	TOTAL WEIGHT		STEAM COIL MODULE		TOTAL WEIGHT		TOTAL WEIGHT		STEAM COIL MODULE		TOTAL WEIGHT		TOTAL WEIGHT		STEAM COIL MODULE		TOTAL WEIGHT	
	(LBS)	(LBS)	(LBS)	(LBS)	(LBS)	(LBS)	(LBS)	(LBS)	(LBS)	(LBS)	(LBS)	(LBS)	(LBS)	(LBS)	(LBS)	(LBS)	(LBS)	(LBS)
G18	1930	1930	1930	1930	1930	1930	1930	1930	1930	1930	1930	1930	1930	1930	1930	1930	1930	
920	3065	3065	3065	3065	3065	3065	3065	3065	3065	3065	3065	3065	3065	3065	3065	3065	3065	

MODEL	TOTAL WEIGHT		STEAM COIL MODULE		TOTAL WEIGHT		TOTAL WEIGHT		STEAM COIL MODULE		TOTAL WEIGHT		TOTAL WEIGHT		STEAM COIL MODULE		TOTAL WEIGHT	
	(LBS)	(LBS)	(LBS)	(LBS)	(LBS)	(LBS)	(LBS)	(LBS)	(LBS)	(LBS)	(LBS)	(LBS)	(LBS)	(LBS)	(LBS)	(LBS)	(LBS)	
G18	1930	1930	1930	1930	1930	1930	1930	1930	1930	1930	1930	1930	1930	1930	1930	1930	1930	
920	3065	3065	3065	3065	3065	3065	3065	3065	3065	3065	3065	3065	3065	3065	3065	3065	3065	

MODEL	TOTAL WEIGHT		STEAM COIL MODULE		TOTAL WEIGHT		TOTAL WEIGHT		STEAM COIL MODULE		TOTAL WEIGHT		TOTAL WEIGHT		STEAM COIL MODULE		TOTAL WEIGHT	
	(LBS)	(LBS)	(LBS)	(LBS)	(LBS)	(LBS)	(LBS)	(LBS)	(LBS)	(LBS)	(LBS)	(LBS)	(LBS)	(LBS)	(LBS)	(LBS)	(LBS)	
G18	1930	1930	1930	1930	1930	1930	1930	1930	1930	1930	1930	1930	1930	1930	1930	1930	1930	
920	3065	3065	3065	3065	3065	3065	3065	3065	3065	3065	3065	3065	3065	3065	3065	3065	3065	

15 TON-618 591 LBS 5 TON 5 TON 5 TON 32-13/16 76-3/16 70-7/8

15 TON-920 591 LBS 5 TON 5 TON 5 TON 32-13/16 97-3/16 91-15/16

15 TON-920 591 LBS 5 TON 5 TON 5 TON 32-13/16 97-3/16 91-15/16

15 TON-920 591 LBS 5 TON 5 TON 5 TON 32-13/16 97-3/16 91-15/16

15 TON-920 591 LBS 5 TON 5 TON 5 TON 32-13/16 97-3/16 91-15/16

15 TON-920 591 LBS 5 TON 5 TON 5 TON 32-13/16 97-3/16 91-15/16

15 TON-920 591 LBS 5 TON 5 TON 5 TON 32-13/16 97-3/16 91-15/16

15 TON-920 591 LBS 5 TON 5 TON 5 TON 32-13/16 97-3/16 91-15/16

15 TON-920 591 LBS 5 TON 5 TON 5 TON 32-13/16 97-3/16 91-15/16