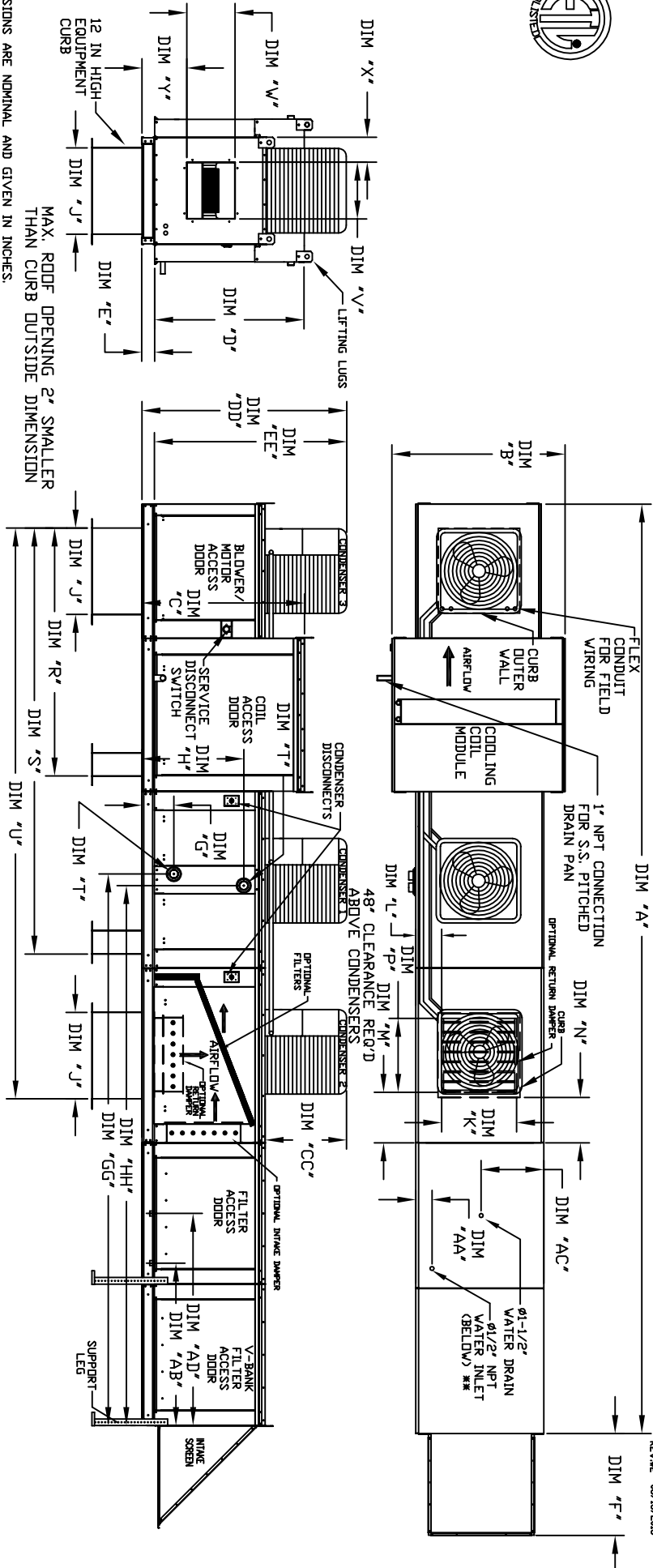




OUTSIDE SIDE DISCHARGE MOD PACKAGE UNIT, HEATING COIL, V-BANK FILTER, EVAPORATIVE COOLER INTAKE, SCREEN INTAKE AND OPTIONAL MIXING BOX



MAX. ROOF OPENING 2' SMALLER THAN CURB OUTSIDE DIMENSION

ALL DIMENSIONS ARE NOMINAL AND GIVEN IN INCHES.

MODEL	UNIT DIMENSIONS										DISCHARGE OPENING																
	A	B	C	D	E	F	J	K	L	M	N	P	R	S	U	V	W	X	Y	Z							
G18	64-8-3/8	54-3/8	56-3/8	51-1/8	5-1/4	34-3/16	35	28	8	7	4-1/2	30	79-3/16	121-5/16	162-3/8	22	19	9	17-7/8	15	TON	MIN	MAX	AA	AB	AC	AD
920	67-7/16	60-7/16	64-3/8	59-1/8	5-1/4	47-1/4	42	33	10	11	8	36	104-9/32	138-15/32	24-7/8	24-7/8	11-1/16	19-1/8	15	TON	MIN	MAX	AA	AB	AC	AD	

MODEL	STEAM COIL MODULE										DISCHARGE OPENING															
	A	B	C	D	E	F	J	K	L	M	N	P	R	S	U	V	W	X	Y	Z						
G18	514.97	1-1/2	1-1/2	9-1/2	140-15/16	38	138-11/16	11	7	4-1/2	30	79-3/16	121-5/16	162-3/8	22	19	9	17-7/8	15	TON	MIN	MAX	AA	AB	AC	AD
920	831.87	2-1/2	2-1/2	10	153-5/8	45-1/2	150	11	8	4-1/2	36	104-9/32	138-15/32	24-7/8	24-7/8	11-1/16	19-1/8	15	TON	MIN	MAX	AA	AB	AC	AD	

MODEL	HEATING COIL MODULE										EVAPORATIVE COOLING UNIT V/															
	A	B	C	D	E	F	J	K	L	M	N	P	R	S	U	V	W	X	Y	Z						
G18	514.97	1-1/2	1-1/2	9-1/2	140-15/16	38	138-11/16	11	7	4-1/2	30	79-3/16	121-5/16	162-3/8	22	19	9	17-7/8	15	TON	MIN	MAX	AA	AB	AC	AD
920	831.87	2-1/2	2-1/2	10	153-5/8	45-1/2	150	11	8	4-1/2	36	104-9/32	138-15/32	24-7/8	24-7/8	11-1/16	19-1/8	15	TON	MIN	MAX	AA	AB	AC	AD	

MODEL	STEAM COIL MODULE										DISCHARGE OPENING															
	A	B	C	D	E	F	J	K	L	M	N	P	R	S	U	V	W	X	Y	Z						
G18	514.97	1-1/2	1-1/2	9-1/2	140-15/16	38	138-11/16	11	7	4-1/2	30	79-3/16	121-5/16	162-3/8	22	19	9	17-7/8	15	TON	MIN	MAX	AA	AB	AC	AD
920	831.87	2-1/2	2-1/2	10	153-5/8	45-1/2	150	11	8	4-1/2	36	104-9/32	138-15/32	24-7/8	24-7/8	11-1/16	19-1/8	15	TON	MIN	MAX	AA	AB	AC	AD	

MODEL	HEATING COIL MODULE										EVAPORATIVE COOLING UNIT V/															
	A	B	C	D	E	F	J	K	L	M	N	P	R	S	U	V	W	X	Y	Z						
G18	514.97	1-1/2	1-1/2	9-1/2	140-15/16	38	138-11/16	11	7	4-1/2	30	79-3/16	121-5/16	162-3/8	22	19	9	17-7/8	15	TON	MIN	MAX	AA	AB	AC	AD
920	831.87	2-1/2	2-1/2	10	153-5/8	45-1/2	150	11	8	4-1/2	36	104-9/32	138-15/32	24-7/8	24-7/8	11-1/16	19-1/8	15	TON	MIN	MAX	AA	AB	AC	AD	

STANDARD CONDENSER INFORMATION

CONDENSER INFORMATION

CONDENSER INFORMATION

CONDENSER INFORMATION

CONDENSER INFORMATION

CONDENSER INFORMATION

CONDENSER INFORMATION

CONDENSER INFORMATION

CONDENSER INFORMATION

CONDENSER INFORMATION

CONDENSER INFORMATION

CONDENSER INFORMATION

CONDENSER INFORMATION

CONDENSER INFORMATION

CONDENSER INFORMATION

CONDENSER INFORMATION

CONDENSER INFORMATION

CONDENSER INFORMATION

CONDENSER INFORMATION

CONDENSER INFORMATION

CONDENSER INFORMATION

CONDENSER INFORMATION

CONDENSER INFORMATION

CONDENSER INFORMATION

CONDENSER INFORMATION

CONDENSER INFORMATION

CONDENSER INFORMATION