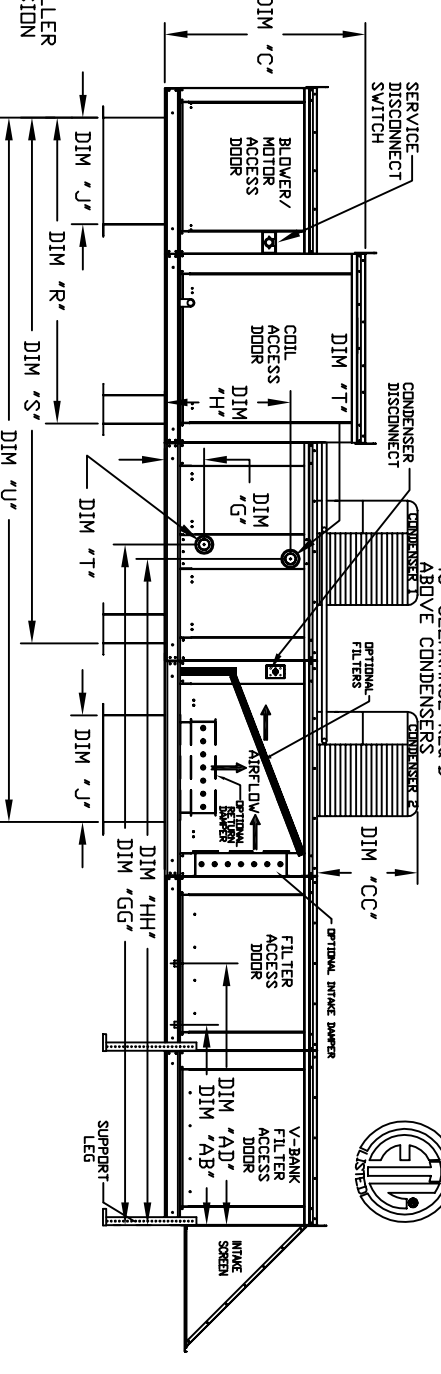
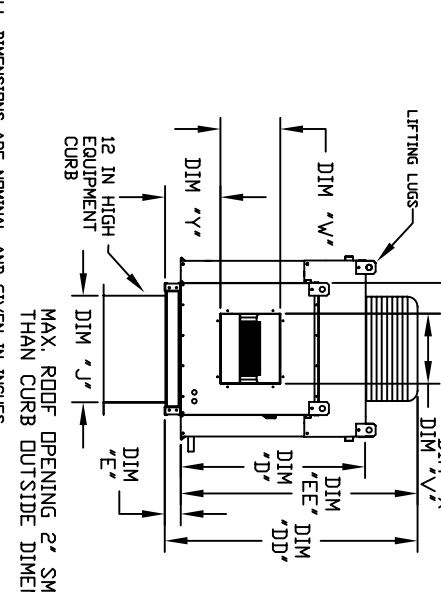
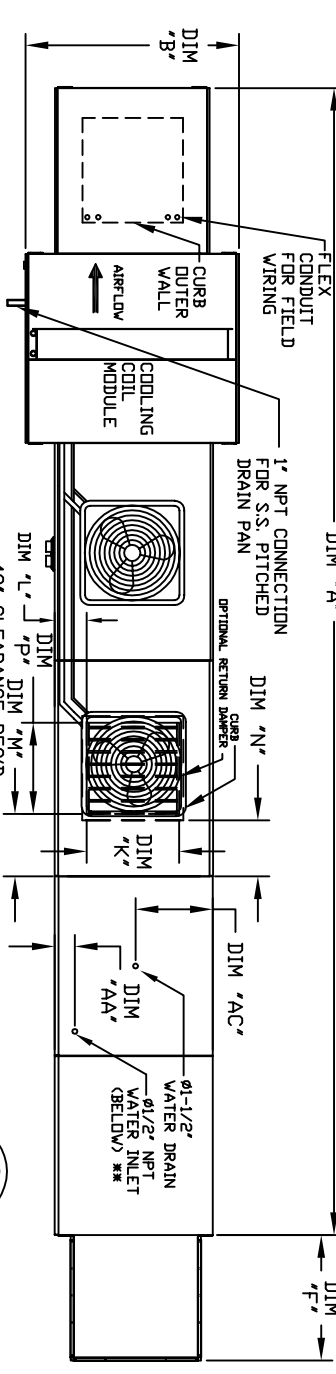


OUTSIDE SIDE DISCHARGE MOD PACKAGE UNIT, HEATING COIL, V-BANK FILTER, EVAPORATIVE COOLER INTAKE, SCREEN INTAKE AND OPTIONAL MIXING BOX

CONDENSER INFORMATION

MODEL	WEIGHT #1	#2	TONNAGE	CC	DD	EE
2 TON-G10	119	134	2 TON	26-5/16	56-1/16	52-3/8
3 TON-G10	134	153	3 TON	33-5/16	63-1/16	59-3/8
5 TON-G10	253	282	5 TON	33-5/16	63-1/16	59-3/8
5 TON-G10	302	325	2.5 TON	32-13/16	62-9/16	58-7/8
5 TON-G12	197	215	5 TON	32-13/16	62-9/16	58-7/8
7.5 TON-G12	348	382	7.5 TON	32-13/16	62-9/16	58-7/8
10 TON-G12	438	475	10 TON	32-13/16	62-9/16	58-7/8
5 TON-G15	197	215	5 TON	32-13/16	62-9/16	58-7/8
7.5 TON-G15	302	325	7.5 TON	32-13/16	62-9/16	58-7/8
10 TON-G15	394	425	10 TON	32-13/16	62-9/16	58-7/8
10 TON-G18	394	425	5 TON	32-13/16	62-9/16	58-7/8
10 TON-920	394	425	5 TON	32-13/16	97-3/16	91-15/16



LL DIMENSIONS ARE NOMINAL AND GIVEN IN INCHES.

MODEL	A	B	C	D	E	F	G	H	J	K	L	M	N	P	R	S	U	V	V	X	Y	AA	AB	AC	AD
G10	223-3/8	39-3/8	42-3/4	39	3-3/4	22-3/8	8-1/4	129-3/16	24-3/4	126-7/16	14	14	12-1/2	18	65-13/16	140-7/8	13-1/4	11-1/2	6-3/8	11-7/8	2	5	5	13	48-1/4
G12	231-3/8	49-3/8	47-3/4	44	3-3/4	30-5/16	8-1/4	129-3/16	28-3/4	126-7/16	14	14	7-1/2	24	74-5/8	116-3/4	15-3/4	13-9/16	10-1/8	13-1/16	5	10	10	18	48-1/4
G15	231-3/8	49-3/8	47-3/4	44	3-3/4	30-5/16	8-1/4	129-3/16	28-3/4	126-7/16	14	14	7-1/2	24	74-5/8	116-3/4	15-3/4	13-9/16	10-1/8	13-1/16	5	10	10	18	48-1/4
G18	248-3/8	54-3/8	56-3/8	51-1/8	5-1/4	34-3/16	8-1/4	139-13/16	28-3/4	138-11/16	18	18	4-1/2	30	79-3/16	121-5/16	18-3/4	16	8-5/8	17-7/8	10	10	10	20	57-1/4
920	297-7/8	60-7/16	64-3/8	59-1/8	5-1/4	47-1/4	10	153-5/8	45-1/2	150	24	24	8	36	104-9/32	158-15/32	24-7/8	24-7/8	11-1/16	19-1/8	10	10	10	20	67-1/2

MODEL	UNIT DIMENSIONS			DISCHARGE OPENING											TONNAGE RANGE				WATER INLET DRAIN OPENING			
	MMH	MMH	MMH	MMH	MMH	MMH	MMH	MMH	MMH	MMH	MMH	MMH	MMH	MMH	MMH	MMH	MMH	MMH	MMH	MMH	MMH	MMH
G10	165.63	2	8-1/4	129-3/16	24-3/4	126-7/16	14	14	12-1/2	18	65-13/16	140-7/8	13-1/4	11-1/2	6-3/8	11-7/8	2	5	5	13	48-1/4	
G12	320.88	2	8-1/4	129-3/16	28-3/4	126-7/16	14	14	7-1/2	24	74-5/8	116-3/4	15-3/4	13-9/16	10-1/8	13-1/16	5	10	10	18	48-1/4	
G15	320.88	2	8-1/4	129-3/16	28-3/4	126-7/16	14	14	7-1/2	24	74-5/8	116-3/4	15-3/4	13-9/16	10-1/8	13-1/16	5	10	10	18	48-1/4	
G18	514.97	1-1/2	9-1/2	140-15/16	38	138-11/16	18	18	4-1/2	30	79-3/16	121-5/16	18-3/4	16	8-5/8	17-7/8	10	10	10	20	57-1/4	
920	831.87	2-1/2	10	153-5/8	45-1/2	150	24	24	8	36	104-9/32	158-15/32	24-7/8	24-7/8	11-1/16	19-1/8	10	10	10	20	67-1/2	

STANDARD EVAPORATIVE COOLING UNIT V/V

MODEL	TOT. WEIGHT	NET MEDIA SIZE & QTY	MAX. CFM	FLOW RATE
HOT	1125	20" x 25" x 2" (3)	406 FPM	6
WATER	1565	16" x 20" x 2" (3)	358 FPM	10
COIL	1575	16" x 20" x 2" (3)	429 FPM	10
MODULE	1930	20" x 25" x 2" (3)	448 FPM	14
920	3090	30.65" x 36" x 2" (4.5)	572 FPM	24

CELDEK EVAPORATIVE COOLING UNIT V/V

MODEL	TOT. WEIGHT	NET MEDIA SIZE & QTY	MAX. CFM	FLOW RATE
HOT	1130	20" x 24" x 2" (3)	406 FPM	6
WATER	1560	16" x 20" x 2" (3)	358 FPM	10
COIL	1570	16" x 20" x 2" (3)	429 FPM	10
MODULE	1925	20" x 25" x 2" (3)	448 FPM	14
920	3060	30.35" x 36" x 2" (4.5)	572 FPM	24

MODEL	TOTAL CAPACITY	PIPE CONNECTION	STEAM	DISCHARGE OPENING	TONNAGE RANGE	WATER INLET DRAIN OPENING
G10	176.49	2-1/2	5	8-3/4	127-13/16	127-13/16
G12	328.19	2-1/2	5	8-3/4	127-13/16	127-13/16
G15	328.19	2-1/2	5	8-3/4	127-13/16	127-13/16
G18	505.64	2-1/2	5	10-1/4	139-13/16	127-13/16
920	812.24	2-1/2	5	10-1/4	152-3/16	127-13/16

MODEL	TOTAL CAPACITY	PIPE CONNECTION	STEAM	DISCHARGE OPENING	TONNAGE RANGE	WATER INLET DRAIN OPENING
G10	176.49	2-1/2	5	8-3/4	127-13/16	127-13/16
G12	328.19	2-1/2	5	8-3/4	127-13/16	127-13/16
G15	328.19	2-1/2	5	8-3/4	127-13/16	127-13/16
G18	505.64	2-1/2	5	10-1/4	139-13/16	127-13/16
920	812.24	2-1/2	5	10-1/4	152-3/16	127-13/16



REV. 08/15/2015