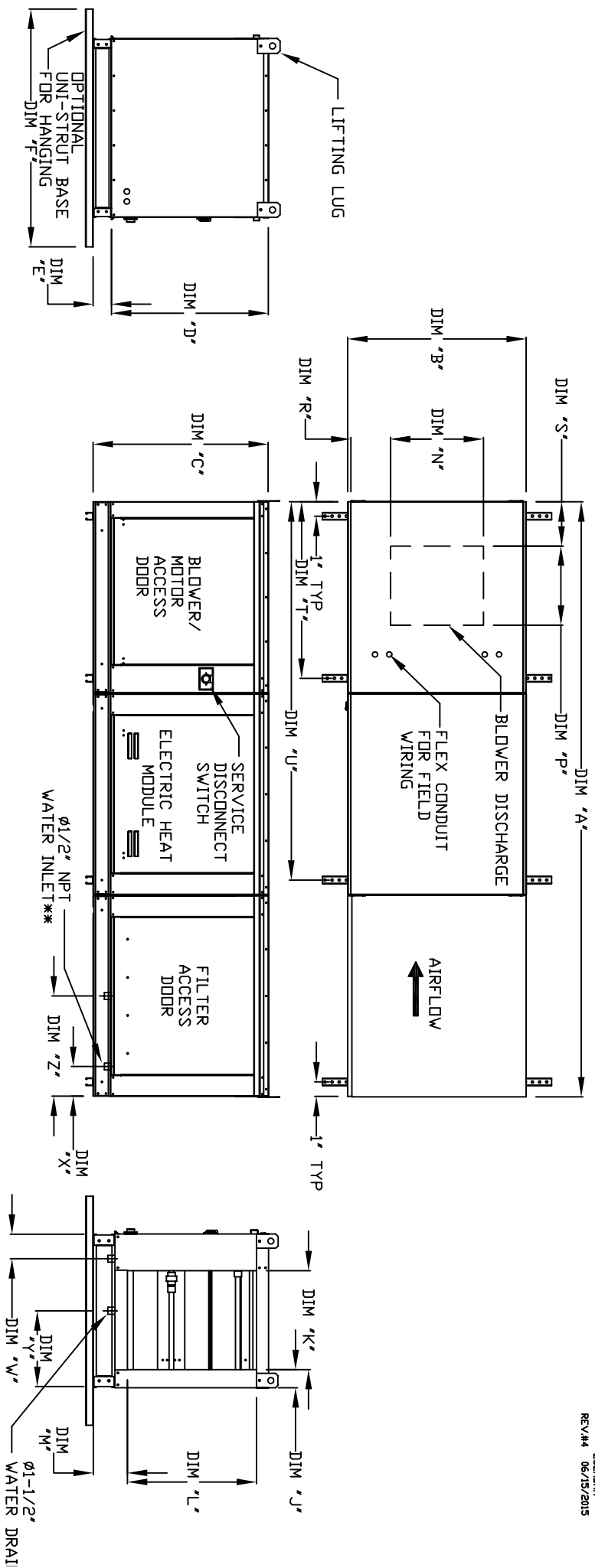


MODULAR INDOOR DOWN DISCHARGE ELECTRIC HEATER WITH EVAPORATIVE COOLER

EC6HDAH  
REV#4 06/15/2015



ALL DIMENSIONS ARE NOMINAL AND GIVEN IN INCHES.

MODEL	UNIT DIMENSIONS												INTAKE OPENING												DISCHARGE OPENING												WATER INLET/DRAIN OPENING											
	A	B	C	D	E	F	J	K	L	M	N	P	R	S	T	U	W	X	Y	Z	J	K	L	M	N	P	R	S	T	U	W	X	Y	Z	W	X	Y	Z										
E1-G10	106-5/8	27-3/8	29-3/4	26-1/16	3-3/4	36	3-1/8	16-3/4	21-7/8	5-3/4	13-1/4	11-1/2	6-3/8	7-1/4	31-1/8	73-1/4	4-1/2	6-1/4	13	16	3-1/8	16-3/4	21-7/8	5-3/4	13-1/4	11-1/2	6-3/8	7-1/4	31-1/8	73-1/4	4-1/2	6-1/4	13	16	4-1/2	6-1/4	13	16										
E2-G15	114-5/8	37-3/8	36-3/4	33-1/16	3-3/4	48	5-1/8	24-3/4	28-7/8	5-3/4	18-3/4	16	8-5/8	10	39-1/8	81-1/4	4-1/2	6-1/4	18	16	5-1/8	24-3/4	28-7/8	5-3/4	18-3/4	16	8-5/8	10	39-1/8	81-1/4	4-1/2	6-1/4	18	16	4-1/2	6-1/4	18	16										
E3-G18	125-5/8	41-3/8	43-3/8	38-1/16	5-1/4	60	4-5/8	29-1/4	33-1/8	7-1/2	22	19	9	12	44-1/8	86-1/4	4-1/2	5-3/4	20	19	4-5/8	29-1/4	33-1/8	7-1/2	22	19	9	12	44-1/8	86-1/4	4-1/2	5-3/4	20	19	4-1/2	5-3/4	20	19										
E4-920	153-7/8	48-7/16	51-3/8	46-1/8	5-1/4	60	4-5/8	36-1/4	41-7/8	7-1/2	24-7/8	24-7/8	11-1/16	12-1/4	63-3/16	117-3/8	4-1/2	5-3/4	23-1/2	17-1/2	4-5/8	36-1/4	41-7/8	7-1/2	24-7/8	24-7/8	11-1/16	12-1/4	63-3/16	117-3/8	4-1/2	5-3/4	23-1/2	17-1/2	4-1/2	5-3/4	23-1/2	17-1/2										
E5-925	163-7/8	59-3/16	58-3/8	53-1/8	5-1/4	72	4-5/8	47	48-7/8	7-1/2	31-3/8	31-3/8	13-3/16	14-1/2	73-3/16	127-3/8	4-1/2	5-3/4	28-7/8	17-1/2	4-5/8	47	48-7/8	7-1/2	31-3/8	31-3/8	13-3/16	14-1/2	73-3/16	127-3/8	4-1/2	5-3/4	28-7/8	17-1/2	4-1/2	5-3/4	28-7/8	17-1/2										

UNIT INFORMATION

MODEL	STANDARD EVAPORATIVE COOLING UNIT						CELDEK EVAPORATIVE COOLING UNIT								
	TOT. WEIGHT	MEDIA SIZE & QTY	VEL. @ MAX. CFM/NOZZLES	MAX. FLOW RATE	TOT. WEIGHT	MEDIA SIZE & QTY	VEL. @ MAX. CFM/NOZZLES	MAX. FLOW RATE	TOT. WEIGHT	MEDIA SIZE & QTY	VEL. @ MAX. CFM/NOZZLES	MAX. FLOW RATE			
G10	635 LBS	20"x25"x2" (3)	406 FPM	6	3 GPH	640 LBS	20"x24"x12"	1050 FPM	12	3.9 GPH	640 LBS	20"x24"x12"	1050 FPM	12	3.9 GPH
G15	920 LBS	16"x20"x2" (8)	429 FPM	10	5 GPH	915 LBS	25"x32"x12"	1080 FPM	20	6.5 GPH	915 LBS	25"x32"x12"	1080 FPM	20	6.5 GPH
G18	1125 LBS	20"x25"x2" (8)	348 FPM	14	7 GPH	1115 LBS	30"x36"x12"	1067 FPM	28	8.4 GPH	1115 LBS	30"x36"x12"	1067 FPM	28	8.4 GPH
920	1775 LBS	16"x20"x2" (15)	572 FPM	24	12 GPH	1745 LBS	38"x43"x12"	1322 FPM	35	10.15 GPH	1745 LBS	38"x43"x12"	1322 FPM	35	10.15 GPH
925	2350 LBS	20"x25"x2" (12)	638 FPM	30	15 GPH	2310 LBS	45"x54"x12"	1304 FPM	42	12.6 GPH	2310 LBS	45"x54"x12"	1304 FPM	42	12.6 GPH

MAX. MAY BE VAD VATED DESCRIBED - EN DCT @ 70 MFC. F