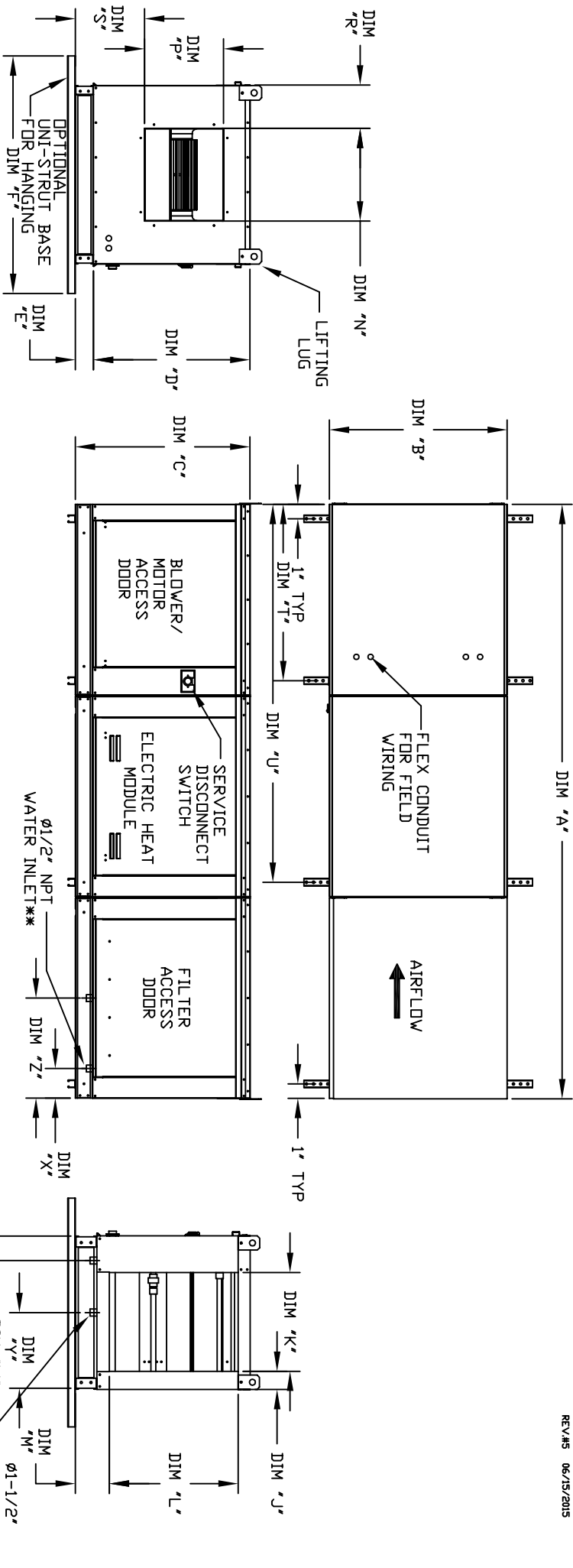


MODULAR INDOOR SIDE DISCHARGE ELECTRIC HEATER WITH EVAPORATIVE COOLER

ECCHSAH
REV#5 06/15/2015



ALL DIMENSIONS ARE NOMINAL AND GIVEN IN INCHES.

MODEL	UNIT DIMENSIONS										INTAKE OPENING				DISCHARGE OPENING				WATER INLET/ DRAIN OPENING			
	A	B	C	D	E	F	J	K	L	M	N	P	R	S	T	U	W	X	Y	Z		
E1-G10	106-5/8	27-3/8	29-3/4	26-1/16	3-3/4	36	3-1/8	16	3/4	21-7/8	5-3/4	13-1/4	11-1/2	6-3/8	11-7/8	31-1/8	73-1/4	4-1/2	6-1/4	13	16	
E2-G15	114-5/8	37-3/8	36-3/4	33-1/16	3-3/4	48	5-1/8	24	3/4	28-7/8	5-3/4	18-3/4	16	8-5/8	14-1/16	39-1/8	81-1/4	4-1/2	6-1/4	18	16	
E3-G18	125-5/8	41-3/8	43-3/8	38-1/16	5-1/4	60	4-5/8	29-1/4	33-7/8	7-1/2	22	19	9	17-7/8	44-1/8	86-1/4	4-1/2	5-3/4	20	19		
E4-920	153-7/8	48-1/16	51-3/8	46-1/8	5-1/4	60	4-5/8	36-1/4	41-7/8	7-1/2	24-7/8	24-7/8	11-1/16	19-1/8	63-3/16	117-3/8	4-1/2	5-3/4	23-1/2	17-1/2		
E5-925	163-7/8	59-3/16	58-3/8	53-1/8	5-1/4	72	4-5/8	47	48-7/8	7-1/2	31-3/8	31-3/8	13-3/16	21-9/16	73-3/16	127-3/8	4-1/2	5-3/4	28-7/8	17-1/2		

UNIT INFORMATION

MODEL	STANDARD EVAPORATIVE COOLING UNIT			
	TOT. WEIGHT	MEDIA SIZE & QTY	VEL. @ MAX. CFM/INCHES	MAX. FLOW RATE
G10	635 LBS	20"x25"x2" (3)	406 FPM	6 GPH
G15	920 LBS	16"x20"x2" (8)	429 FPM	10 GPH
G18	1125 LBS	20"x25"x2" (8)	348 FPM	14 GPH
920	1775 LBS	16"x20"x2" (15)	572 FPM	24 GPH
925	2350 LBS	20"x25"x2" (12)	638 FPM	30 GPH

MODEL	CELDEK EVAPORATIVE COOLING UNIT			
	TOT. WEIGHT	MEDIA SIZE & QTY	VEL. @ MAX. CFM/INCHES	MAX. FLOW RATE
G10	640 LBS	20"x24"x12"	1050 FPM	12 GPH
G15	915 LBS	25"x32"x12"	1080 FPM	20 GPH
G18	1115 LBS	30"x36"x12"	1067 FPM	28 GPH
920	1745 LBS	38"x43"x12"	1322 FPM	35 GPH
925	2310 LBS	45"x54"x12"	1304 FPM	42 GPH