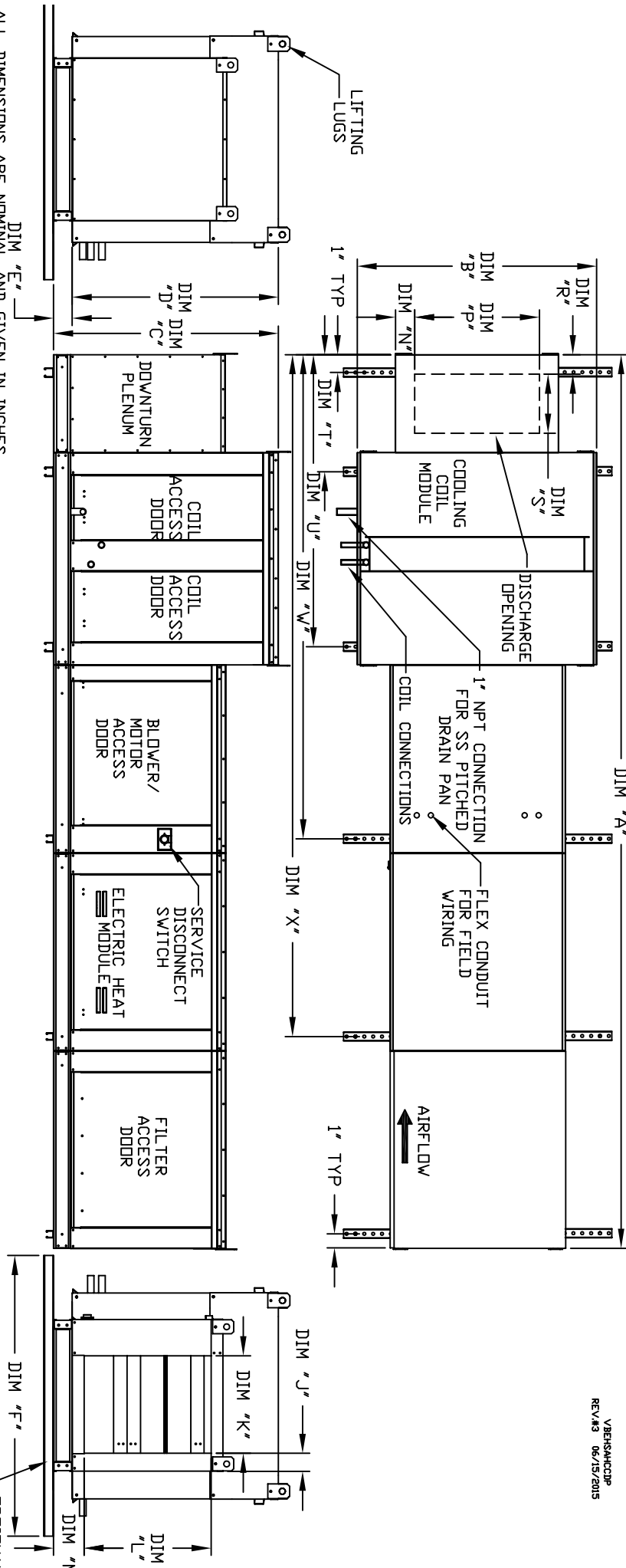


MODULAR INDOOR DOWN DISCHARGE ELECTRIC HEATER WITH COOLING COIL AND V-BANK INTAKE



ALL DIMENSIONS ARE NOMINAL AND GIVEN IN INCHES.

MODEL	WEIGHT	A	B	C	D	E	F	J	K	L	M	N	P	R	S	T	U	V	X
E1-G10	1035 LBS	167-1/4	39-3/8	42-3/4	39	3-3/4	48	3-1/8	16-3/4	21-7/8	5-3/4	6-1/8	13-7/8	3-1/4	11-1/2	19-1/4	59-3/8	91-1/2	133-5/8
E2-G15	1420 LBS	181-1/4	49-3/8	47-3/4	44	3-3/4	60	5-1/8	24-3/4	28-7/8	5-3/4	6-7/8	22-3/8	3	18	25-1/4	65-3/8	105-1/2	147-5/8
E3-G18	1695 LBS	192-1/4	54-3/8	56-3/8	51-1/8	5-1/4	72	4-5/8	29-1/4	33-7/8	7-1/2	8-7/8	22-3/8	3	18	25-1/4	65-3/8	110-1/2	152-5/8
E4-920	2650 LBS	238-9/16	60-7/16	64-3/8	59-1/8	5-1/4	72	4-5/8	36-1/4	41-7/8	7-1/2	7-7/8	31-1/2	3-1/4	23-1/2	31-1/4	83-7/16	147-5/8	201-13/16
E5-925	3375 LBS	248-9/16	79-7/16	68-7/16	63-3/16	5-1/4	96	4-5/8	47	48-7/8	7-1/2	13-1/4	31-1/2	3-1/4	23-1/2	31-1/4	83-7/16	157-5/8	211-13/16

UNIT INFORMATION

MODEL	TONNAGE RANGE	FILTER SIZE & QTY	MAX. FILTER VELOCITY	
E1-G10	3 Ton	12.5 Ton	20"x25"x2" (3)	@3600 CFM = 418 FPM
E2-G15	5 Ton	20 Ton	16"x20"x2" (8)	@6500 CFM = 464 FPM
E3-G18	10 Ton	25 Ton	20"x25"x2" (8)	@8000 CFM = 348 FPM
E4-920	20 Ton	40 Ton	16"x20"x2" (15)	@13000 CFM = 495 FPM
E5-925	30 Ton	50 Ton	20"x25"x2" (15)	@22000 CFM = 638 FPM

VBSRACRCP  
REV#3 06/15/2015