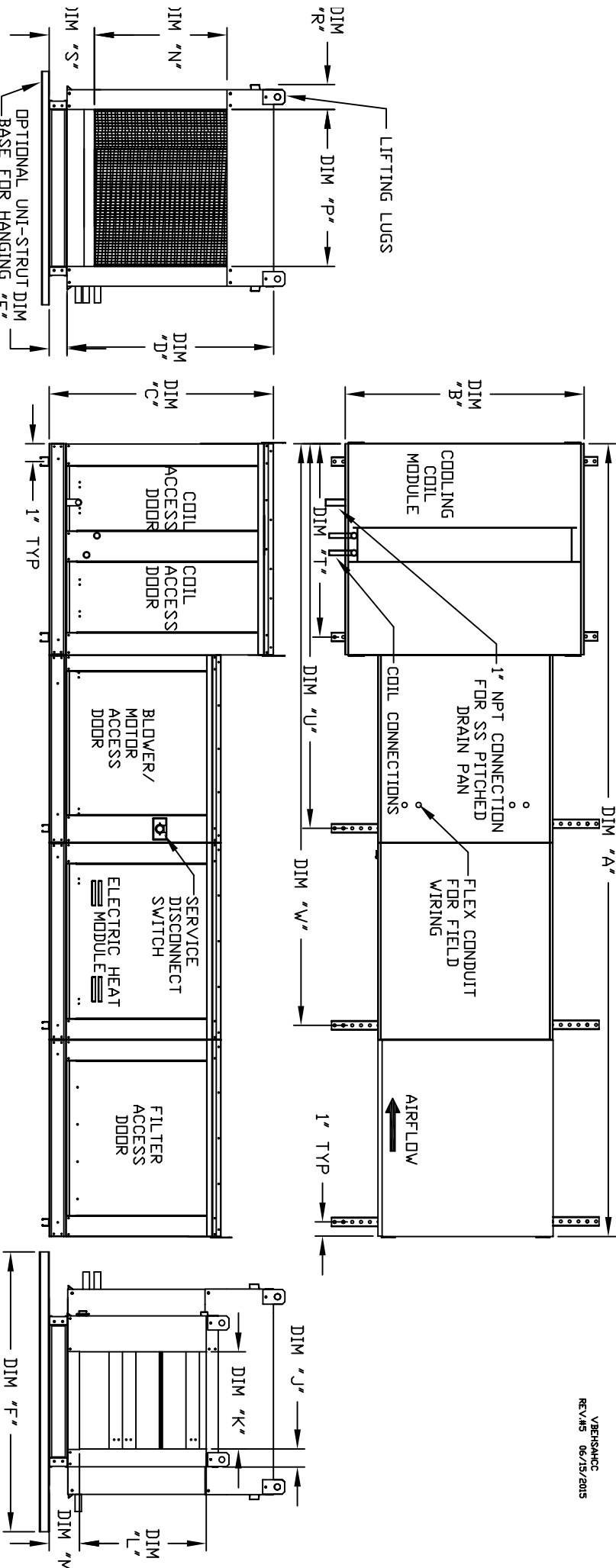


MODULAR INDOOR INLINE ELECTRIC HEATER WITH COOLING COIL AND V-BANK INTAKE



OPTIONAL UNIT-STRUT DIM BASE FOR HANGING "E"

ALL DIMENSIONS ARE NOMINAL AND GIVEN IN INCHES.

MODEL	WEIGHT	A	B	C	D	E	F	J	K	L	M	N	P	R	S	T	U	V
E1-G10	955 LBS	148-7/8	39-3/8	42-3/4	39	3-3/4	48	3-1/8	16-3/4	21-7/8	5-3/4	17-1/2	16	11	5-3/4	41-1/8	73-1/4	115-3/8
E2-G15	1305 LBS	156-7/8	49-3/8	47-3/4	44	3-3/4	60	5-1/8	24-3/4	28-7/8	5-3/4	29-3/4	22-3/4	12-5/8	5-3/4	41-1/8	81-1/4	123-3/8
E3-G18	1555 LBS	167-7/8	54-3/8	56-3/8	44	3-3/4	72	4-5/8	29-1/4	33-7/8	7-1/2	29-5/8	30	11-1/2	7-3/8	41-1/8	86-1/4	128-3/8
E4-920	2450 LBS	208-3/16	60-7/16	64-3/8	59-1/8	5-1/4	72	4-5/8	36-1/4	41-7/8	7-1/2	36-3/4	34	12-1/2	7-3/8	53-3/16	117-3/8	171-9/16
E5-925	3145 LBS	218-3/16	79-7/16	68-7/16	63-3/16	5-1/4	96	4-5/8	47	48-7/8	7-1/2	45-1/4	43	17-1/2	7-3/8	53-3/16	127-3/8	181-9/16

UNIT INFORMATION.

MODEL	TONNAGE RANGE		FILTER SIZE & QTY		MAX. FILTER VELOCITY	
	MIN	MAX				
E1-G10	3 Ton	12.5 Ton	20"x25"x2"	(3)	@3600 CFM	= 418 FPM
E2-G15	5 Ton	20 Ton	16"x20"x2"	(8)	@6500 CFM	= 464 FPM
E3-G18	10 Ton	25 Ton	20"x25"x2"	(8)	@8000 CFM	= 348 FPM
E4-920	20 Ton	40 Ton	16"x20"x2"	(15)	@13000 CFM	= 495 FPM
E5-925	30 Ton	50 Ton	20"x25"x2"	(12)	@22000 CFM	= 638 FPM