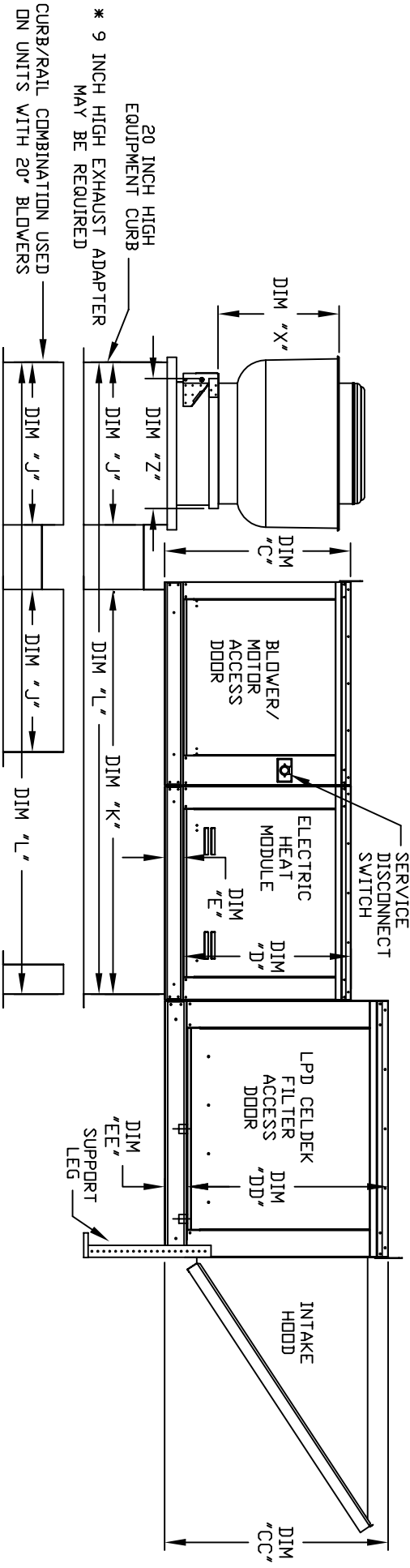
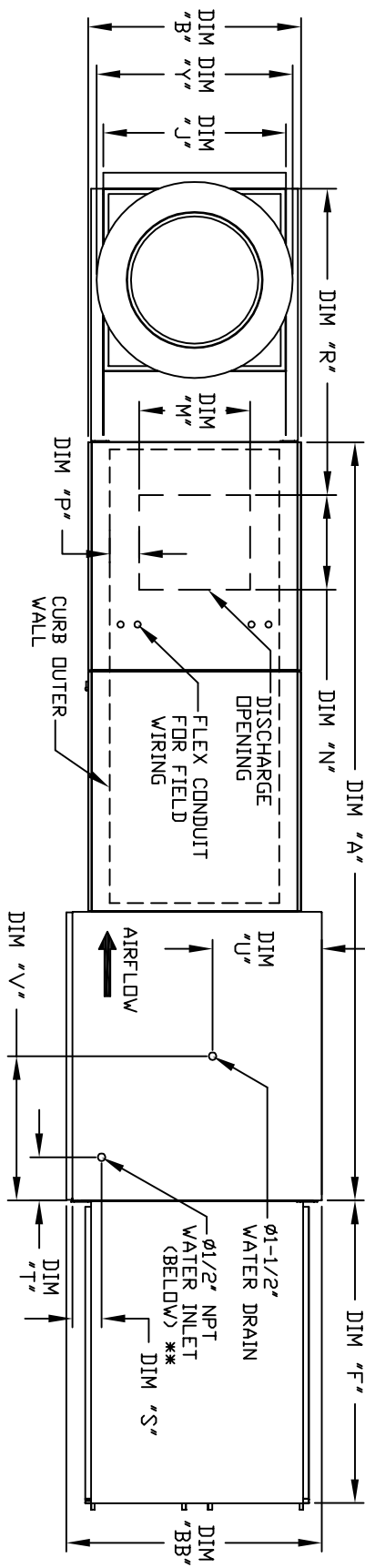


MODULAR OUTDOOR DOWN DISCHARGE ELECTRIC HEATER-ROOF TOP PACKAGE WITH LPD EVAPORATIVE COOLER AND INTAKE HOOD

THEPCECDHART
REV#1 9/29/20



EXHAUST UNIT DIMENSIONS

MODEL #	T	U	V	**
BDU2	14-1/2	22	19	
BDU11				
BDU12	18-1/2	27-1/4	21	
BDU13				
BDU14	21-1/2	30-1/4	21	
BDU15				
BDU16	23	33-3/4	24-3/4	
BDU17				
BDU18	23-1/2	39-3/8	28	
BDU20	29-1/2	38-7/8	28	
BDU24	30-5/8	43-3/8	33	
BDU30	33-1/2	52-3/4	40	

UNIT DIMENSIONS

MODEL	A	B	BB	C	CC	D	DD	E	EE	F	J	K	L	M	N	P	R	S	T	U	V
E1-G10	106-3/8	27-3/8	36-3/4	29-3/4	36-3/4	26-1/16	33	3-3/4	3-3/4	53-5/8	21	71	106	13-1/4	11-1/2	3-7/8	40-9/16	4-1/2	6-1/4	18	16
E2-G15	120-3/8	37-3/8	40-3/4	43-3/8	33-1/16	38-1/8	33	3-3/4	5-1/4	51-5/8	31	79	124	18-3/4	16	6-1/8	55-13/16	4-1/2	5-3/4	20	19
E3-G18	122-1/2	41-3/8	47-7/8	43-3/8	38-1/16	46-1/8	35	5-1/4	5-1/4	76-3/8	35	84	133	22	19	6-1/2	59-5/16	4-1/2	5-3/4	23-1/2	17-1/2
E3-920	153-5/8	48-7/16	58-5/8	51-3/8	58-3/8	46-1/8	42	5-1/4	5-1/4	71-3/8	42	115-3/16	171-3/16	24-7/8	24-7/8	8-9/16	66-5/8	4-1/2	5-3/4	18-7/8	17-1/2

UNIT INFORMATION

MODEL	FILTER SIZE & QTY	MAX. FILTER VELOCITY	TOT. WEIGHT	MEDIA SIZE & QTY	VEL. @ MAX. CFM	NOZZLES	MAX. FLOW RATE
G10	20"x25"x2" (3)	@3500 CFM = 417 FPM	825 LBS	25"x32"x12"	648 FPM	20	6.5 GPH
G15	16"x20"x2" (6)	@6500 CFM = 619 FPM	1060 LBS	30"x36"x12"	867 FPM	28	8.4 GPH
G18	16"x20"x2" (10)	@8000 CFM = 457 FPM	1395 LBS	38"x43"x12"	705 FPM	35	10.15 GPH
920	20"x25"x2" (8)	@13000 CFM = 565 FPM	2095 LBS	45"x54"x12"	770 FPM	42	12.6 GPH

CELDEK EVAPORATIVE COOLING UNIT

MODEL	CELDEK EVAPORATIVE COOLING UNIT
G10	20"x25"x2" (3)
G15	16"x20"x2" (6)
G18	16"x20"x2" (10)
920	20"x25"x2" (8)

ALL DIMENSIONS ARE NOMINAL AND GIVEN IN INCHES.
 ROOF OPENING 2" SMALLER THAN CURB DIMENSION
 **MAY VARY BASED ON SPECIFIC - EN DAT & TN MFG. C