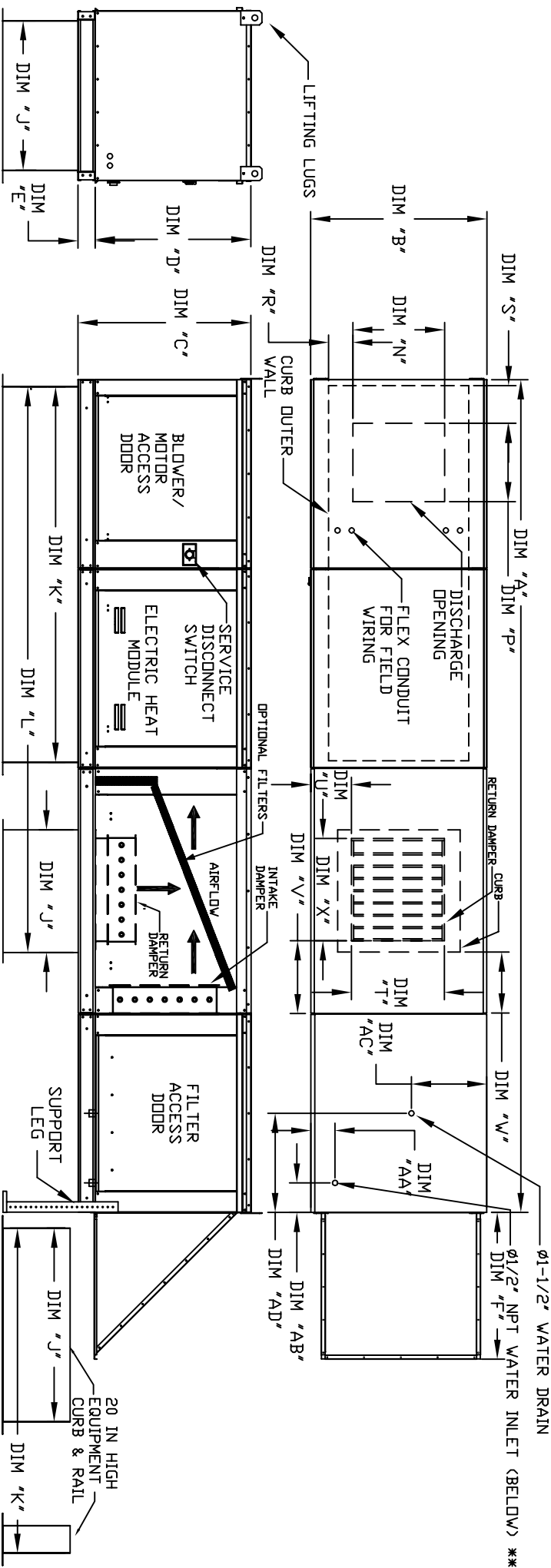


MODULAR OUTDOOR DOWN DISCHARGE ELECTRIC HEATER WITH EVAPORATIVE COOLER, MIXING BOX AND SCREEN INTAKE

SEECHERDHAH
REV. #0 08/03/2011



ALL DIMENSIONS ARE NOMINAL AND GIVEN IN INCHES.

MAX. ROOF OPENING 2" SMALLER THAN CURB OUTSIDE DIMENSION.

CURB/RAIL COMBINATION USED IN PLACE OF SINGLE CURB ON UNITS WITH 20" AND 25" BLOWERS

| MODEL | A | B | C | D | E | F | J | K | L | N | P | R | S | T | U | V | W | X | AA | AB | AC | AD |
|--------|----------|---------|--------|---------|-------|---------|--------|----------|-----------|--------|--------|----------|---------|--------|----|----|-------|---------|-------|--------|--------|----|
| E1-G10 | 148-7/8 | 27-3/8 | 29-3/4 | 26-1/16 | 3-3/4 | 22-3/8 | 21 | 71 | 102-7/16 | 13-1/4 | 11-1/2 | 3-7/8 | 5-9/16 | 14 | 8 | 14 | 12.5 | 184-1/2 | 6-1/4 | 13 | 16 | |
| E2-G15 | 156-7/8 | 37-3/8 | 36-3/4 | 33-1/16 | 3-3/4 | 30-5/16 | 31 | 79 | 115-7/16 | 18-3/4 | 16 | 6-1/8 | 8-5/16 | 22-3/4 | 8 | 11 | 7.5 | 244-1/2 | 6-1/4 | 18 | 16 | |
| E3-G18 | 167-7/8 | 41-3/8 | 43-3/8 | 38-1/16 | 5-1/4 | 34-3/16 | 35 | 84 | 123-7/16 | 22 | 19 | 6-1/2 | 10-5/16 | 28 | 8 | 7 | 4.5 | 304-1/2 | 5-3/4 | 20 | 19 | |
| E4-920 | 208-3/16 | 48-7/16 | 51-3/8 | 46-1/8 | 5-1/4 | 47-1/4 | 42 | 115-3/16 | 163-3/16 | 24-7/8 | 24-7/8 | 8-9/16 | 10-5/8 | 33 | 10 | 11 | 8 | 364-1/2 | 5-3/4 | 23-1/2 | 17-1/2 | |
| E5-925 | 218-3/16 | 59-3/16 | 58-3/8 | 53-1/8 | 5-1/4 | 49-5/8 | 52-3/4 | 123-3/16 | 179-15/16 | 31-3/8 | 31-3/8 | 10-11/16 | 12-7/8 | 43 | 10 | 11 | 1-1/4 | 434-1/2 | 5-3/4 | 28-7/8 | 17-1/2 | |

UNIT INFORMATION

| MODEL | FILTER SIZE & QTY | MAX. FILTER VELOCITY | TOT. WEIGHT | MEDIA SIZE & QTY | VEL. @ MAX. CFM | NOZZLES | MAX. FLOW RATE |
|--------|-------------------|----------------------|-------------|------------------|-----------------|---------|----------------|
| E1-G10 | 16"x20"x2" (3) | @3600 CFM = 686 FPM | 815 LBS | 20"x25"x2" (3) | 406 FPM | 6 | 3 GPH |
| E2-G15 | 20"x25"x2" (3) | @6500 CFM = 754 FPM | 1170 LBS | 16"x20"x2" (8) | 429 FPM | 10 | 5 GPH |
| E3-G18 | 16"x20"x2" (6) | @8000 CFM = 762 FPM | 1455 LBS | 20"x25"x2" (8) | 348 FPM | 14 | 7 GPH |
| E4-920 | 16"x20"x2" (10) | @13000 CFM = 743 FPM | 2350 LBS | 16"x20"x2" (15) | 572 FPM | 24 | 12 GPH |
| E5-925 | 20"x25"x2" (8) | @22000 CFM = 956 FPM | 3060 LBS | 20"x25"x2" (12) | 638 FPM | 30 | 15 GPH |

STANDARD EVAPORATIVE COOLING UNIT

| MODEL | FILTER SIZE & QTY | MAX. FILTER VELOCITY | TOT. WEIGHT | MEDIA SIZE & QTY | VEL. @ MAX. CFM | NOZZLES | MAX. FLOW RATE |
|--------|-------------------|----------------------|-------------|------------------|-----------------|---------|----------------|
| E1-G10 | 10"x16"x2" (5) | @3600 CFM = 686 FPM | 820 LBS | 20"x24"x12" (12) | 1050 FPM | 12 | 3.9 GPH |
| E2-G15 | 20"x25"x2" (2) | @6500 CFM = 754 FPM | 1165 LBS | 25"x32"x12" (10) | 1080 FPM | 20 | 6.5 GPH |
| E3-G18 | 15"x20"x2" (4) | @8000 CFM = 762 FPM | 1445 LBS | 30"x36"x12" (8) | 1067 FPM | 28 | 8.4 GPH |
| E4-920 | 18"x25"x2" (4) | @13000 CFM = 743 FPM | 2320 LBS | 38"x43"x12" (5) | 1322 FPM | 35 | 10.15 GPH |
| E5-925 | 14.5"x19"x2" (12) | @22000 CFM = 956 FPM | 3020 LBS | 45"x54"x12" (10) | 1304 FPM | 42 | 12.6 GPH |

** MAX EVAP WATER PRESSURE = 50 PSI @ 70 DEG F

OPTIONAL MIXING BOX FILTERS

| MODEL | FILTER SIZE & QTY |
|--------|-------------------|
| E1-G10 | 10"x16"x2" (5) |
| E2-G15 | 20"x25"x2" (2) |
| E3-G18 | 15"x20"x2" (4) |
| E4-920 | 18"x25"x2" (4) |
| E5-925 | 14.5"x19"x2" (12) |