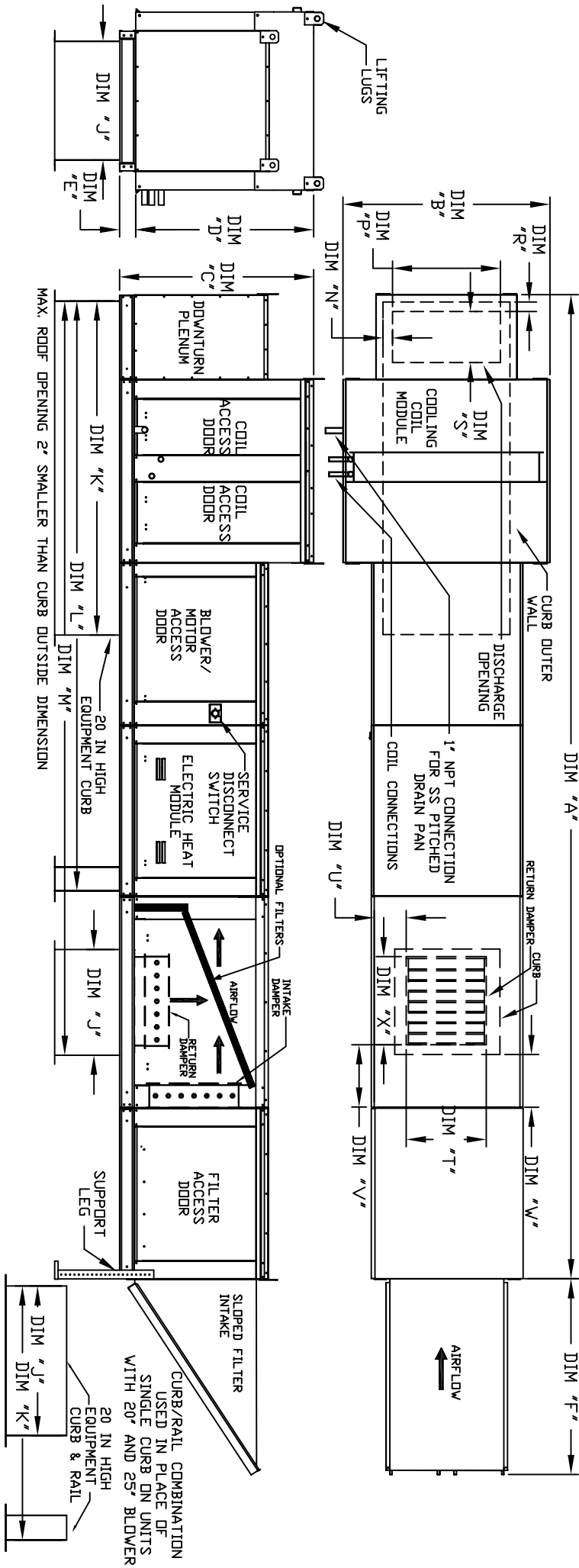


MODULAR OUTDOOR DOWN DISCHARGE ELECTRIC HEATER WITH COOLING COIL, MIXING BOX, V-BANK AND INTAKE HOOD

IHV2BESHACC0P  
REV#0 11/28/2011



ALL DIMENSIONS ARE NOMINAL AND GIVEN IN INCHES.

MODEL	WEIGHT	UNIT DIMENSIONS																		
		A	B	C	D	E	F	J	K	L	M	N	P	R	S	T	U	V	W	X
E1-G10	1235 LBS	209-1/2	39-3/8	42-3/4	39	3-3/4	44-3/8	21	71	131-5/8	163-5/16	3-9/16	13-7/8	1-13/16	11-1/2	14	8	14	12-1/2	18
E2-G15	1700 LBS	223-1/2	49-3/8	47-3/4	44	3-3/4	53-5/8	31	79	145-5/8	182-5/16	4-5/16	22-3/8	1-9/16	18	22-3/4	8	11	7-1/2	24
E3-G18	2065 LBS	234-1/2	54-3/8	56-3/8	51-1/8	5-1/4	51-5/8	35	84	150-5/8	190-1/4	6-5/16	22-3/8	1-1/2	18	28	8	7	4-1/2	30
E4-920	3335 LBS	292-7/8	60-7/16	64-3/8	59-1/8	5-1/4	76-3/8	42	115-3/16	199-7/8	248-1/16	5-1/4	31-1/2	1-13/16	23-1/2	33	10	7	8	36
E5-925	4175 LBS	302-7/8	79-7/16	68-7/16	63-3/16	5-1/4	71-3/8	52-3/4	125-3/16	209-7/8	264-13/16	5-1/4	31-1/2	1-13/16	23-1/2	43	10	6-1/2	1-1/4	43

UNIT INFORMATION

MODEL	TONNAGE RANGE		FILTER SIZE & QTY	MAX. FILTER VELOCITY
	MIN	MAX		
E1-G10	3 Ton	12.5 Ton	20"x25"x2" (3)	63600 CFM = 418 FPM
E2-G15	5 Ton	20 Ton	16"x20"x2" (8)	66500 CFM = 464 FPM
E3-G18	10 Ton	25 Ton	20"x25"x2" (8)	88000 CFM = 348 FPM
E4-920	20 Ton	40 Ton	16"x20"x2" (15)	13000 CFM = 495 FPM
E5-925	30 Ton	50 Ton	20"x25"x2" (15)	22000 CFM = 638 FPM

MODEL	CURB/RAIL		DISCHARGE OPENING
	FILTER SIZE & QTY	MAX. FILTER VELOCITY	
E1-G10	10"x16"x2" (5)	63600 CFM = 418 FPM	13-7/8"
E2-G15	20"x25"x2" (2), 16"x25"x2" (1)	66500 CFM = 464 FPM	22-3/8"
E3-G18	15"x20"x2" (4), 15"x15"x2" (2)	88000 CFM = 348 FPM	22-3/8"
E4-920	18"x25"x2" (4), 16"x20"x2" (2)	13000 CFM = 495 FPM	31-1/2"
E5-925	14"x19"x2" (12)	22000 CFM = 638 FPM	31-1/2"

MODEL	OPTIONAL MIXING BOX FILTERS	
	FILTER SIZE & QTY	MAX. FILTER VELOCITY
E1-G10	10"x16"x2" (5)	63600 CFM = 418 FPM
E2-G15	20"x25"x2" (2), 16"x25"x2" (1)	66500 CFM = 464 FPM
E3-G18	15"x20"x2" (4), 15"x15"x2" (2)	88000 CFM = 348 FPM
E4-920	18"x25"x2" (4), 16"x20"x2" (2)	13000 CFM = 495 FPM
E5-925	14"x19"x2" (12)	22000 CFM = 638 FPM