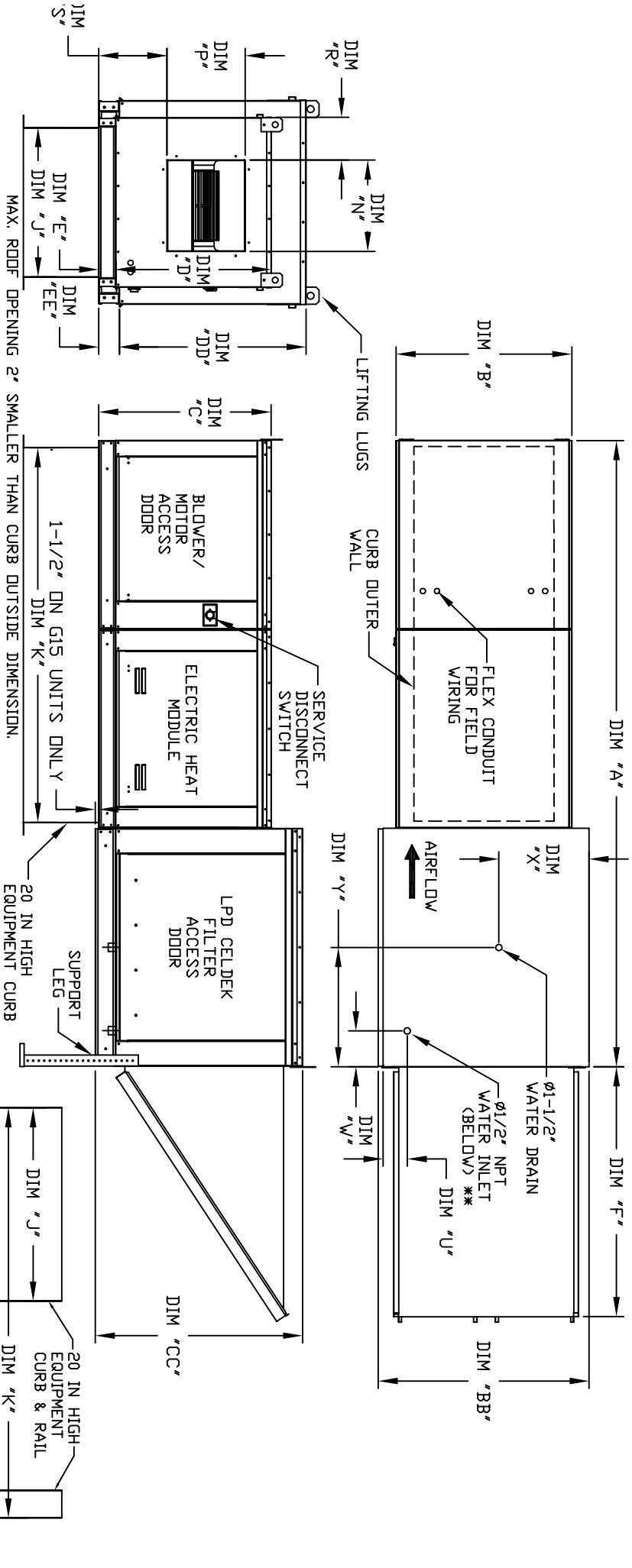


MODULAR OUTDOOR SIDE DISCHARGE ELECTRIC HEATER WITH LPD EVAPORATIVE COOLER AND INTAKE HOOD

REV #2 01/09/2012
H.L.PACER/SHAH



ALL DIMENSIONS ARE NOMINAL AND GIVEN IN INCHES.

MAX. ROOF OPENING 2" SMALLER THAN CURB OUTSIDE DIMENSION.

CURB/RAIL COMBINATION USED IN PLACE OF SINGLE CURB ON UNITS WITH 20" BLOWERS

MODEL	UNIT DIMENSIONS															
	A	B	BB	C	CC	D	DD	E	EE	F	J	K	N	P	R	S
E1-G10	106-3/8	27-3/8	36-3/4	29-3/4	36-3/4	26-1/16	33	3-3/4	3-3/4	53-5/8	21	71	13-1/4	11-1/2	6-3/8	11-7/8
E2-G15	120-3/8	31-3/8	40-3/4	36-3/4	43-3/8	33-1/16	38-1/8	3-3/4	3-3/4	51-5/8	31	79	18-3/4	16	8-5/8	14-1/16
E3-G18	122-1/2	41-3/8	47-7/8	43-3/8	51-3/8	38-1/16	46-1/8	5-1/4	5-1/4	76-3/8	35	84	22	19	9	17-7/8
E4-920	153-5/8	48-7/16	58-5/8	51-3/8	58-3/8	46-1/8	53-1/8	5-1/4	5-1/4	71-3/8	42	115-3/16	24-7/8	24-7/8	11-1/16	19-1/8

UNIT INFORMATION

MODEL	FILTER SIZE & QTY	MAX. FILTER VELOCITY
G10	20"x25"x2" (3)	@3600 CFM = 417 FPM
G15	16"x20"x2" (6)	@6500 CFM = 619 FPM
G18	16"x20"x2" (10)	@8000 CFM = 457 FPM
920	20"x25"x2" (8)	@13000 CFM = 565 FPM

CELDEK EVAPORATIVE COOLING UNIT			WATER INLET			DRAIN OPENING			
MODEL	TDI. WEIGHT	MEDIA SIZE & QTY	VEL. @ MAX. CFM	NOZZLES	MAX. FLOW RATE	U	W	X	Y
G10	825 LBS	25"x32"x12"	648 FPM	20	6.5 GPH	4-1/2	6-1/4	18	16
G15	1060 LBS	30"x36"x12"	867 FPM	28	8.4 GPH	4-1/2	5-3/4	20	19
G18	1395 LBS	38"x43"x12"	705 FPM	35	10.15 GPH	4-1/2	5-3/4	23-1/2	17-1/2
920	2035 LBS	45"x54"x12"	770 FPM	42	12.6 GPH	4-1/2	5-3/4	28-7/8	17-1/2