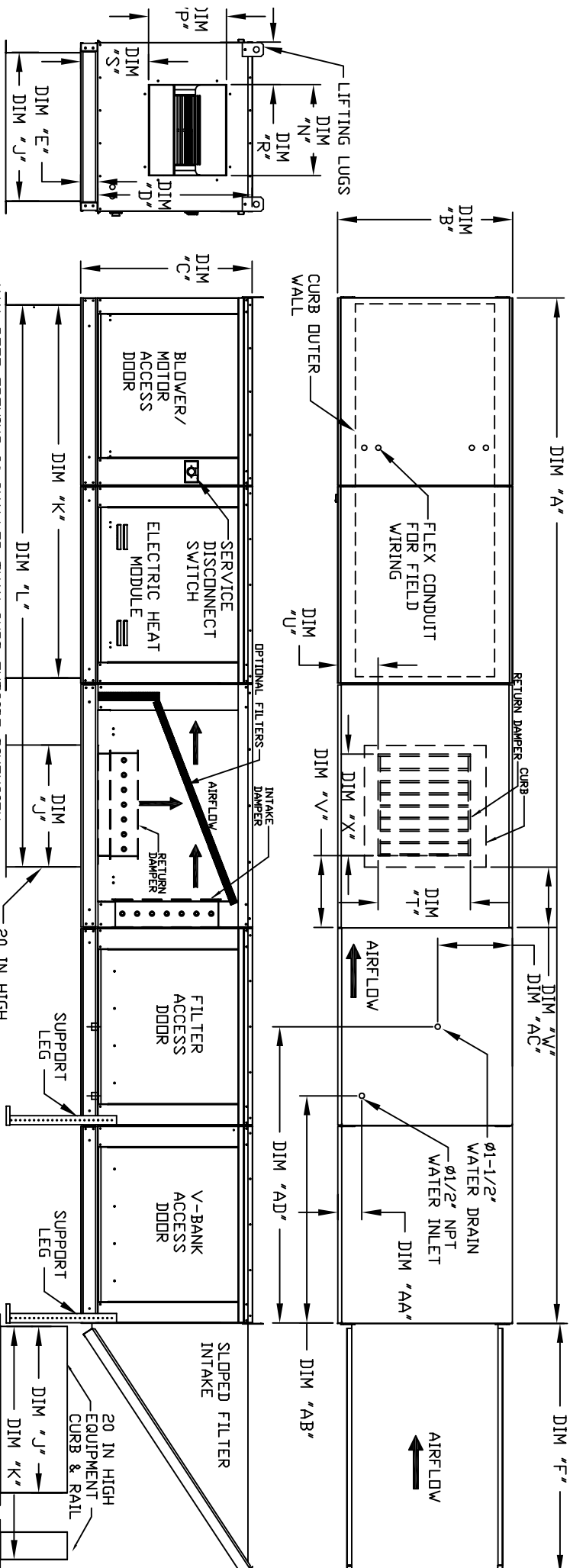


MODULAR OUTDOOR SIDE DISCHARGE ELECTRIC HEATER WITH V-BANK, EVAPORATIVE COOLER, MIXING BOX AND INTAKE HOOD

JHVBCBRS344H
REV. #0 09/03/2011



ALL DIMENSIONS ARE NOMINAL AND GIVEN IN INCHES.

MAX. ROOF OPENING 2' SMALLER THAN CURB OUTSIDE DIMENSION.

20 IN HIGH EQUIPMENT CURB

CURB/RAIL COMBINATION USED IN PLACE OF SINGLE CURB ON UNITS WITH 20' AND 25' BLOWER.

MODEL	UNIT DIMENSIONS													CURB					DISCHARGE OPENING					RETURN DAMPER OPENING					WATER INLET DRAIN OPENING				
	A	B	C	D	E	F	J	K	L	N	P	R	S	T	U	V	W	X	AA	AB	AC	AD											
E1-G10	181-1/8	27-3/8	29-3/4	26-1/16	3-3/4	44-3/8	21	71	102-7/16	13-1/4	11-1/2	6-3/8	11-7/8	14	8	11	12.5	18-4-1/2	38-1/2	13	48-1/4												
E2-G15	189-1/8	37-3/8	36-3/4	33-1/16	3-3/4	53-5/8	31	79	115-7/16	18-3/4	16	8-5/8	14-1/16	22-3/4	8	11	14	24-4-1/2	38-1/2	18	48-1/4												
E3-G18	206-1/8	41-3/8	43-3/8	38-1/16	5-1/4	51-5/8	35	84	123-7/16	22	19	9	17-7/8	28	8	7	4.5	30-4-1/2	44	20	57-1/4												
E4-920	243-9/16	48-7/16	51-3/8	46-1/8	5-1/4	76-3/8	42	115-3/16	163-3/16	24-7/8	24-7/8	11-1/16	19-1/8	33	10	11	8	36-4-1/2	41-1/8	23-1/2	52-7/8												
E5-925	253-9/16	59-3/16	58-3/8	53-1/8	5-1/4	71-3/8	52-3/4	123-3/16	179-15/16	31-3/8	31-3/8	13-3/16	21-9/16	43	10	10	6-1/2	41-1/4	43-4-1/2	41-1/8	28-7/8	52-7/8											

MODEL	FILTER SIZE & QTY	MAX. FILTER VELOCITY
E1-G10	16"x20"x2" (3)	@3600 CFM = 686 FPM
E2-G15	20"x25"x2" (3)	@6500 CFM = 754 FPM
E3-G18	16"x20"x2" (6)	@8000 CFM = 762 FPM
E4-920	16"x20"x2" (10)	@13000 CFM = 743 FPM
E5-925	20"x25"x2" (8)	@22000 CFM = 956 FPM

STANDARD EVAPORATIVE COOLING UNIT						
MODEL	FILTER SIZE & QTY	FILTER SIZE & QTY	TOT. WEIGHT	MEDIA SIZE & QTY	VEL. & MAX. CFM/NOZZLES	MAX. FLOW RATE
E1-G10	20"x25"x2" (3)	10"x16"x2" (5)	930 LBS	20"x25"x2" (3)	406 FPM	6 GPH
E2-G15	16"x20"x2" (6)	10"x16"x2" (5)	1335 LBS	16"x20"x2" (8)	429 FPM	10 GPH
E3-G18	16"x20"x2" (6)	10"x16"x2" (5)	1660 LBS	20"x25"x2" (8)	348 FPM	14 GPH
E4-920	16"x20"x2" (10)	10"x16"x2" (5)	2695 LBS	16"x20"x2" (15)	572 FPM	24 GPH
E5-925	20"x25"x2" (8)	10"x16"x2" (5)	3445 LBS	20"x25"x2" (12)	638 FPM	30 GPH

CELDEK EVAPORATIVE COOLING UNIT						
MODEL	FILTER SIZE & QTY	FILTER SIZE & QTY	TOT. WEIGHT	MEDIA SIZE & QTY	VEL. & MAX. CFM/NOZZLES	MAX. FLOW RATE
E1-G10	20"x25"x2" (3)	10"x16"x2" (5)	935 LBS	20"x24"x12" (3)	1050 FPM	12 GPH
E2-G15	16"x20"x2" (6)	10"x16"x2" (5)	1330 LBS	25"x32"x12" (3)	1080 FPM	20 GPH
E3-G18	16"x20"x2" (6)	10"x16"x2" (5)	1650 LBS	30"x36"x12" (3)	1067 FPM	28 GPH
E4-920	16"x20"x2" (10)	10"x16"x2" (5)	2665 LBS	38"x43"x12" (3)	1322 FPM	35 GPH
E5-925	20"x25"x2" (8)	10"x16"x2" (5)	3405 LBS	45"x54"x12" (3)	1304 FPM	42 GPH

** MAX EVAP WATER PRESSURE = 50 PSI @ 70 DEG F