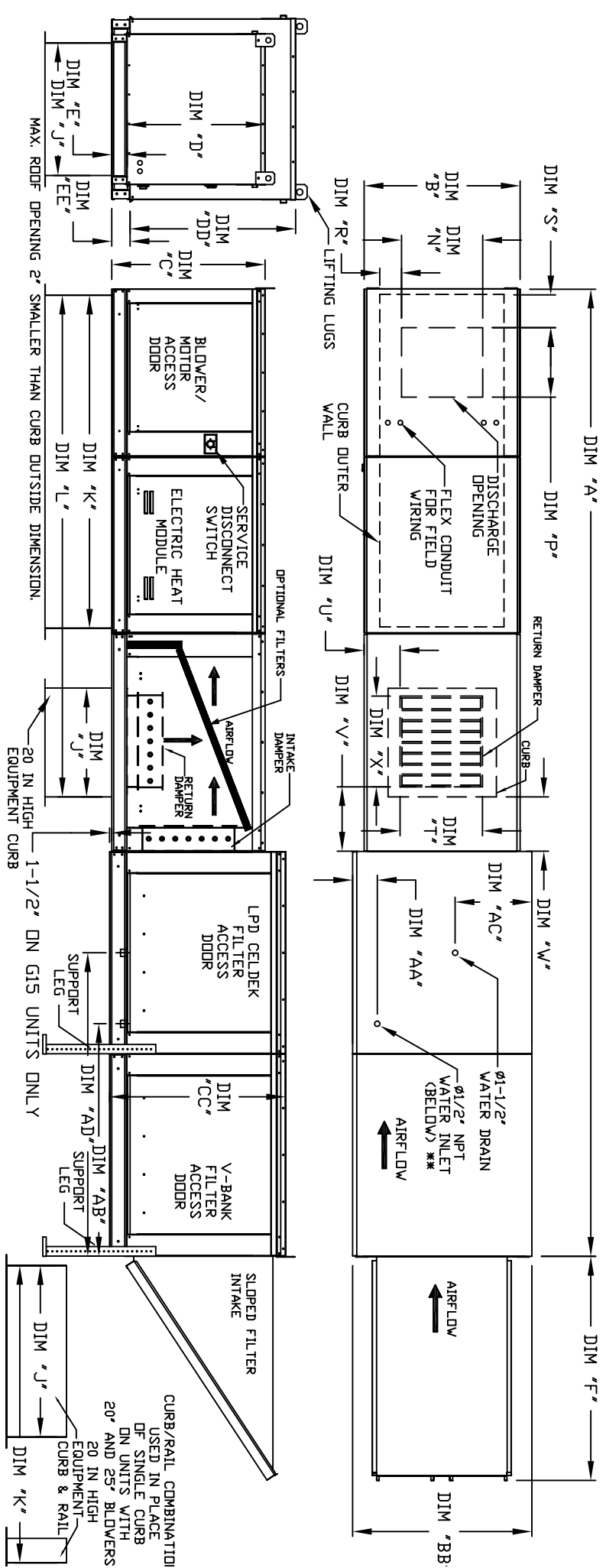


MODULAR OUTDOOR DOWN DISCHARGE ELECTRIC HEATER WITH V-BANK, LPD EVAPORATIVE COOLER, MIXING BOX AND INTAKE HOOD

11/01/2018
REV. 01/09/2012



ALL DIMENSIONS ARE NOMINAL AND GIVEN IN INCHES.

MODEL	UNIT DIMENSIONS													CURB				DISCHARGE OPENING				RETURN DAMPER OPENING			
	A	B	BB	C	CC	D	DD	E	EE	F	J	K	L	N	P	R	S	T	U	V	W	X			
1-G10	181-1/8	27-3/8	37-3/8	29-3/4	36-3/4	26-1/16	33	3-3/4	3-3/4	53-5/8	21	71	102-7/16	13-1/4	11-1/2	3-7/8	1-3/4	14	8	14	12-1/2	18			
2-G15	195-1/8	37-3/8	41-3/8	36-3/4	44-3/8	33-1/16	38-1/8	3-3/4	5-1/4	51-5/8	31	79	115-7/16	18-3/4	16	6-1/8	5-1/2	22-3/4	8	11	7-1/2	24			
3-G18	203-1/8	41-3/8	48-7/16	43-3/8	51-3/8	38-1/16	46-1/8	5-1/4	5-1/4	76-3/8	35	84	123-7/16	22	19	6-1/2	7	28	8	7	4-1/2	30			
4-920	243-9/16	48-7/16	59-3/16	51-3/8	58-3/8	46-1/8	53-1/8	5-1/4	5-1/4	71-3/8	42	115-3/16	163-3/16	24-7/8	24-7/8	8-9/16	1-1/8	33	10	11	8	36			
5-925	253-9/16	59-3/16	74-7/8	58-3/8	65-3/8	53-1/8	61-1/4	5-1/4	5-1/4	71-3/8	42	125-3/4	179-15/16	31-3/8	31-3/8	10-11/16	13-1/16	43	10	6-1/2	1-1/4	43			

UNIT INFORMATION

MODEL	FILTER SIZE & QTY		CELDEK EVAPORATIVE COOLING UNIT		WATER INLET		DRAIN OPENING		V-BANK		OPTIONAL MIXING BOX FILTERS	
	TOP WEIGHT	MEDIA SIZE & QTY	NOZZLES	MAX. FLOW RATE	AA	AB	AC	AD	FILTER SIZE & QTY	FILTER SIZE & QTY	FILTER SIZE & QTY	FILTER SIZE & QTY
G10	20"x25"x2" (3)	25"x32"x12"	28	6.5 GPH	4-1/2	38-1/2	18	48-1/4	16"x20"x2" (8)	10"x16"x2" (5)	20"x25"x2" (2), 16"x25"x2" (1)	15"x20"x2" (4), 15"x15"x2" (2)
G15	16"x20"x2" (6)	30"x36"x12"	28	8.4 GPH	4-1/2	44	20	57-1/4	20"x25"x2" (8)	15"x20"x2" (4), 15"x15"x2" (2)	18"x25"x2" (4), 16"x20"x2" (2)	
G18	16"x20"x2" (10)	38"x43"x12"	35	10.15 GPH	4-1/2	41-1/8	23-1/2	52-7/8	20"x25"x2" (12)	18"x25"x2" (4), 16"x20"x2" (2)	14.5"x19"x2" (12)	
920	20"x25"x2" (8)	45"x54"x12"	42	12.6 GPH	4-1/2	28-7/8	52-7/8	52-7/8	20"x25"x2" (12)			
925	20"x25"x2" (8)	45"x72"x12"	57	20.1 GPH	4-1/2	41-1/8	52-7/8	52-7/8	20"x25"x2" (12)			