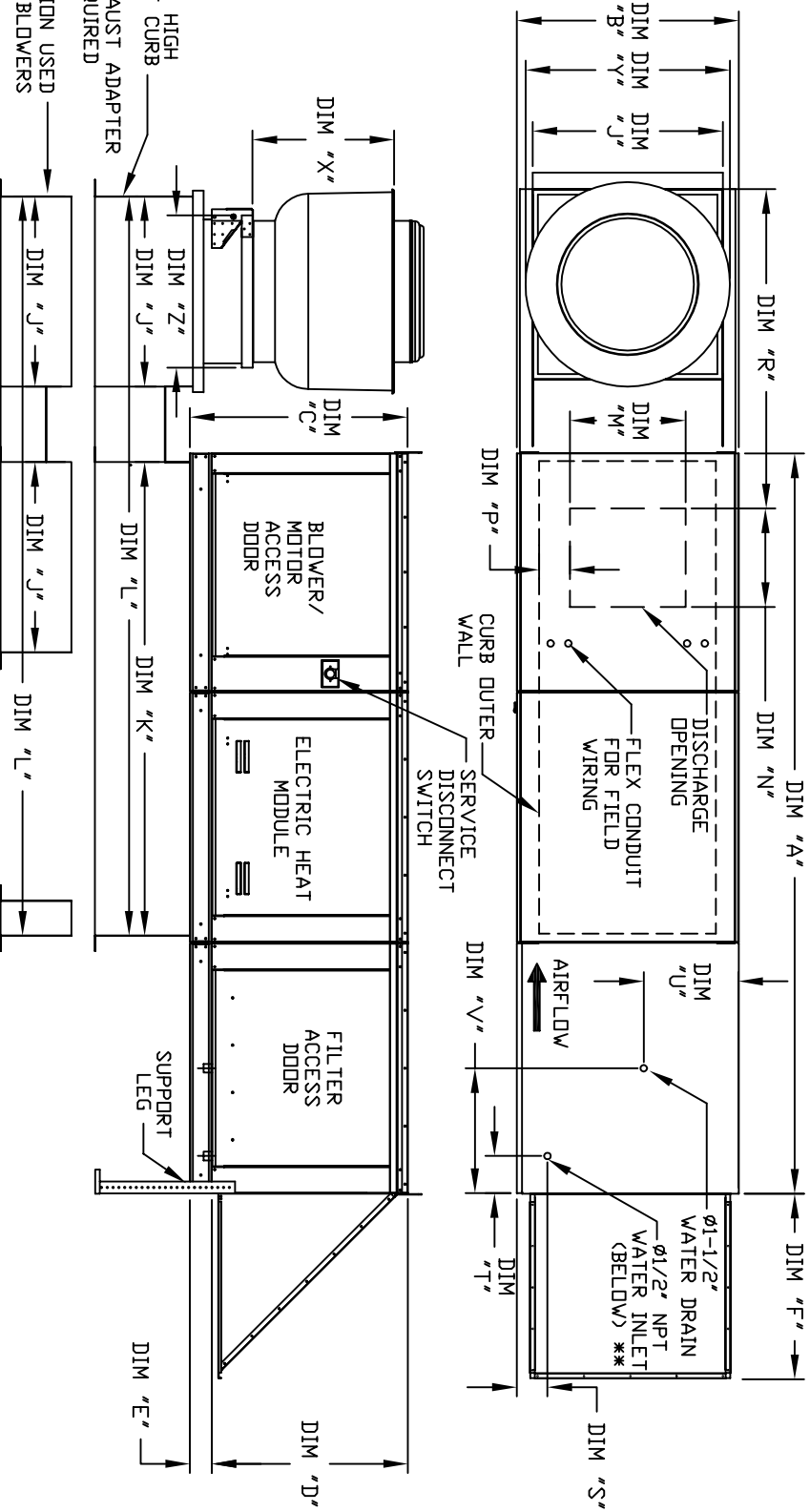


MODULAR OUTDOOR DOWN DISCHARGE ELECTRIC HEATER-ROOF TOP PACKAGE WITH EVAPORATIVE COOLER AND SCREEN INTAKE

SIEGENDARFT  
REV#1 1/29/20K



\* 9 INCH HIGH EXHAUST ADAPTER MAY BE REQUIRED

EXHAUST UNIT DIMENSIONS	MODEL #	X	Y	Z *
BDU2	14-1/2	22	19	
BDU11	18-1/2	27-1/4	21	
BDU3	21-1/2	30-1/4	21	
BDU5	23	33-3/4	24-3/4	
BDU8	23-1/2	39-3/8	28	
BDU18	29-1/2	98-7/8	28	
BDU24	30-5/8	43-3/8	33	
BDU30	33-1/2	52-3/4	40	

MODEL	UNIT DIMENSIONS											CURB											DISCHARGE OPENING											WATER INLET											DRAIN OPENING										
	A	B	C	D	E	F	J	K	L	M	N	P	R	S	T	U	V	J	K	L	M	N	P	R	S	T	U	V	S	T	U	V	S	T	U	V	S	T	U	V															
E1-G10	106-5/8	27-3/8	29-3/4	26-1/16	3-3/4	22-3/8	21	71	106	13-1/4	11-1/2	3-7/8	40-9/16	4-1/2	6-1/4	13	16	21	71	106	13-1/4	11-1/2	3-7/8	40-9/16	4-1/2	6-1/4	13	16	4-1/2	6-1/4	13	16	4-1/2	6-1/4	13	16	4-1/2	6-1/4	13	16															
E2-G15	114-5/8	37-3/8	36-3/4	33-1/16	3-3/4	30-5/16	31	79	124	18-3/4	16	6-1/8	55-13/16	4-1/2	6-1/4	18	16	31	79	124	18-3/4	16	6-1/8	55-13/16	4-1/2	6-1/4	18	16	4-1/2	6-1/4	18	16	4-1/2	6-1/4	18	16	4-1/2	6-1/4	18	16															
E3-G18	125-5/8	41-3/8	43-3/8	38-1/16	5-1/4	34-3/16	35	84	133	22	19	6-1/2	59-5/16	4-1/2	5-3/4	20	19	35	84	133	22	19	6-1/2	59-5/16	4-1/2	5-3/4	20	19	4-1/2	5-3/4	20	19	4-1/2	5-3/4	20	19	4-1/2	5-3/4	20	19															
E4-920	153-7/8	48-7/16	51-3/8	46-1/8	5-1/4	47-1/4	42	115-3/16	171-3/16	24-7/8	24-7/8	8-9/16	66-5/8	4-1/2	5-3/4	23-1/2	17-1/2	42	115-3/16	171-3/16	24-7/8	24-7/8	8-9/16	66-5/8	4-1/2	5-3/4	23-1/2	17-1/2	4-1/2	5-3/4	23-1/2	17-1/2	4-1/2	5-3/4	23-1/2	17-1/2	4-1/2	5-3/4	23-1/2	17-1/2															

MODEL	STANDARD EVAPORATIVE COOLING UNIT						CELDEK EVAPORATIVE COOLING UNIT					
	TOT. WEIGHT	MEDIA SIZE & QTY	VEL. @ MAX. CFM	NOZZLES	MAX. FLOW RATE		TOT. WEIGHT	MEDIA SIZE & QTY	VEL. @ MAX. CFM	NOZZLES	MAX. FLOW RATE	
E1-G10	360 LBS	20"x25"x2" (3)	406 FPM	6	3 GPH	365 LBS	20"x24"x12"	1050 FPM	12	39 GPH		
E2-G15	575 LBS	16"x20"x2" (8)	429 FPM	10	5 GPH	570 LBS	25"x32"x12"	1080 FPM	20	6.5 GPH		
E3-G18	625 LBS	20"x25"x2" (8)	348 FPM	14	7 GPH	715 LBS	30"x36"x12"	1067 FPM	28	8.4 GPH		
E4-920	1165 LBS	16"x20"x2" (15)	572 FPM	24	12 GPH	1135 LBS	38"x43"x12"	1322 FPM	35	10.15 GPH		

ALL DIMENSIONS ARE NOMINAL AND GIVEN IN INCHES.

ROOF OPENING 2" SMALLER THAN CURB DIMENSION

\*\*\*\*\* CIV/AD V/ATFD DDC/CIIDF - 50 DGT 0 70 HFC C