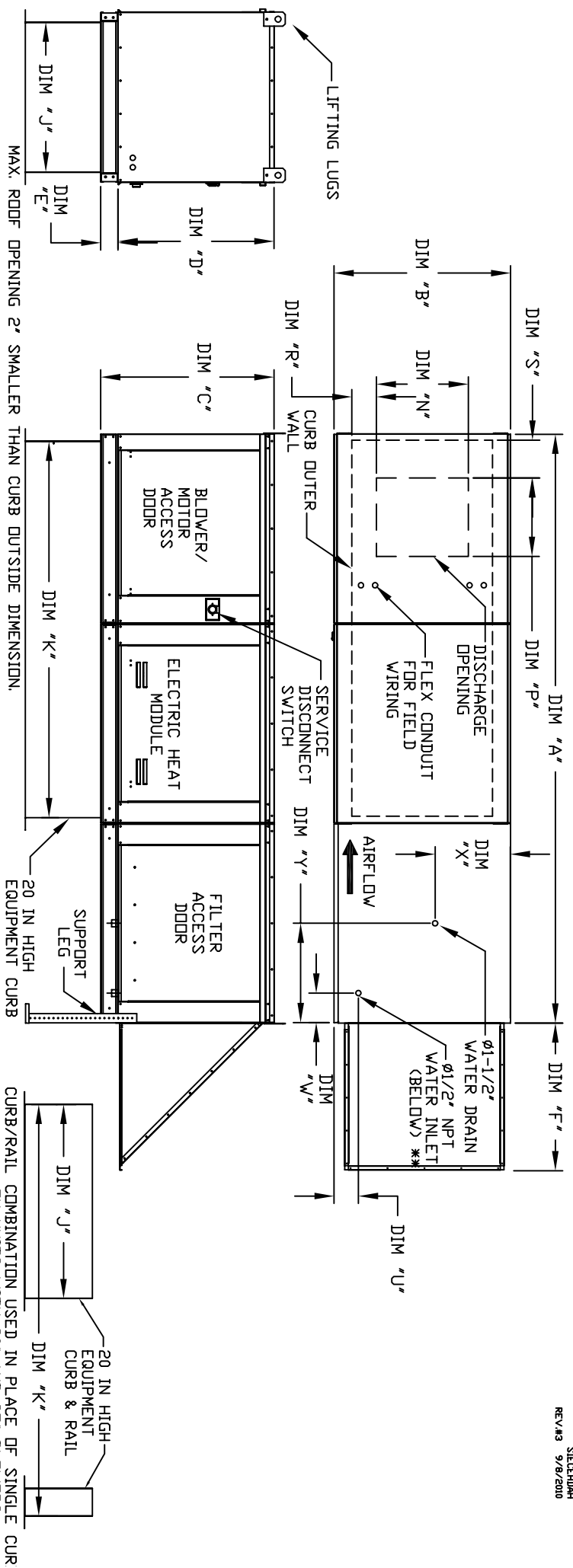


MODULAR OUTDOOR DOWN DISCHARGE ELECTRIC HEATER WITH EVAPORATIVE COOLER AND SCREEN INTAKE

SEECTIONH
REV#3 9/9/2000



ALL DIMENSIONS ARE NOMINAL AND GIVEN IN INCHES.

MODEL	UNIT DIMENSIONS											DISCHARGE OPENING											WATER INLET DRAIN OPENING										
	A	B	C	D	E	F	J	K	N	P	R	S	U	W	X	Y	R	S	T	U	V	W	X	Y	U	V	W	X	Y				
E1-G10	106-5/8	27-3/8	29-3/4	26-1/16	3-3/4	22-3/8	21	71	13-1/4	11-1/2	3-7/8	5-9/16	4-1/2	6-1/4	13	16	3-7/8	5-9/16	4-1/2	6-1/4	13	16	4-1/2	6-1/4	13	16	16						
E2-G15	114-5/8	37-3/8	36-3/4	33-1/16	3-3/4	30-5/16	31	79	18-3/4	16	6-1/8	8-5/16	4-1/2	6-1/4	18	16	6-1/8	8-5/16	4-1/2	6-1/4	18	16	4-1/2	6-1/4	18	16	16						
E3-G18	125-5/8	41-3/8	43-3/8	38-1/16	5-1/4	34-3/16	35	84	22	19	6-1/2	10-5/16	4-1/2	5-3/4	20	19	6-1/2	10-5/16	4-1/2	5-3/4	20	19	4-1/2	5-3/4	20	19	19						
E4-920	153-7/8	48-7/16	51-3/8	46-1/8	5-1/4	47-1/4	42	115-3/16	24-7/8	24-7/8	8-9/16	10-5/8	4-1/2	5-3/4	23-1/2	17-1/2	8-9/16	10-5/8	4-1/2	5-3/4	23-1/2	17-1/2	4-1/2	5-3/4	23-1/2	17-1/2	17-1/2						
E5-925	163-7/8	59-3/16	58-3/8	53-1/8	5-1/4	49-5/8	52-3/4	125-3/16	31-3/8	31-3/8	10-11/16	12-7/8	4-1/2	5-3/4	28-7/8	17-1/2	10-11/16	12-7/8	4-1/2	5-3/4	28-7/8	17-1/2	4-1/2	5-3/4	28-7/8	17-1/2	17-1/2						

UNIT INFORMATION

MODEL	STANDARD EVAPORATIVE COOLING UNIT				CELDEK EVAPORATIVE COOLING UNIT			
	TOT. WEIGHT	MEDIA SIZE & QTY	VEL. @ MAX. CFM	NOZZLES	TOT. WEIGHT	MEDIA SIZE & QTY	VEL. @ MAX. CFM	NOZZLES
E1-G10	660 LBS	20"x25"x2" (3)	406 FPM	6	665 LBS	20"x24"x12"	1050 FPM	12
E2-G15	955 LBS	16"x20"x2" (8)	429 FPM	10	950 LBS	25"x32"x12"	1080 FPM	20
E3-G18	1175 LBS	20"x25"x2" (8)	348 FPM	14	1165 LBS	30"x36"x12"	1067 FPM	28
E4-920	1875 LBS	16"x20"x2" (15)	572 FPM	24	1845 LBS	38"x43"x12"	1322 FPM	35
E5-925	2485 LBS	20"x25"x2" (12)	638 FPM	30	2445 LBS	45"x54"x12"	1304 FPM	42

MODEL	TOT. WEIGHT	MEDIA SIZE & QTY	VEL. @ MAX. CFM	NOZZLES	MAX. FLOW RATE
E1-G10	660 LBS	20"x25"x2" (3)	406 FPM	6	3 GPH
E2-G15	955 LBS	16"x20"x2" (8)	429 FPM	10	5 GPH
E3-G18	1175 LBS	20"x25"x2" (8)	348 FPM	14	7 GPH
E4-920	1875 LBS	16"x20"x2" (15)	572 FPM	24	12 GPH
E5-925	2485 LBS	20"x25"x2" (12)	638 FPM	30	15 GPH