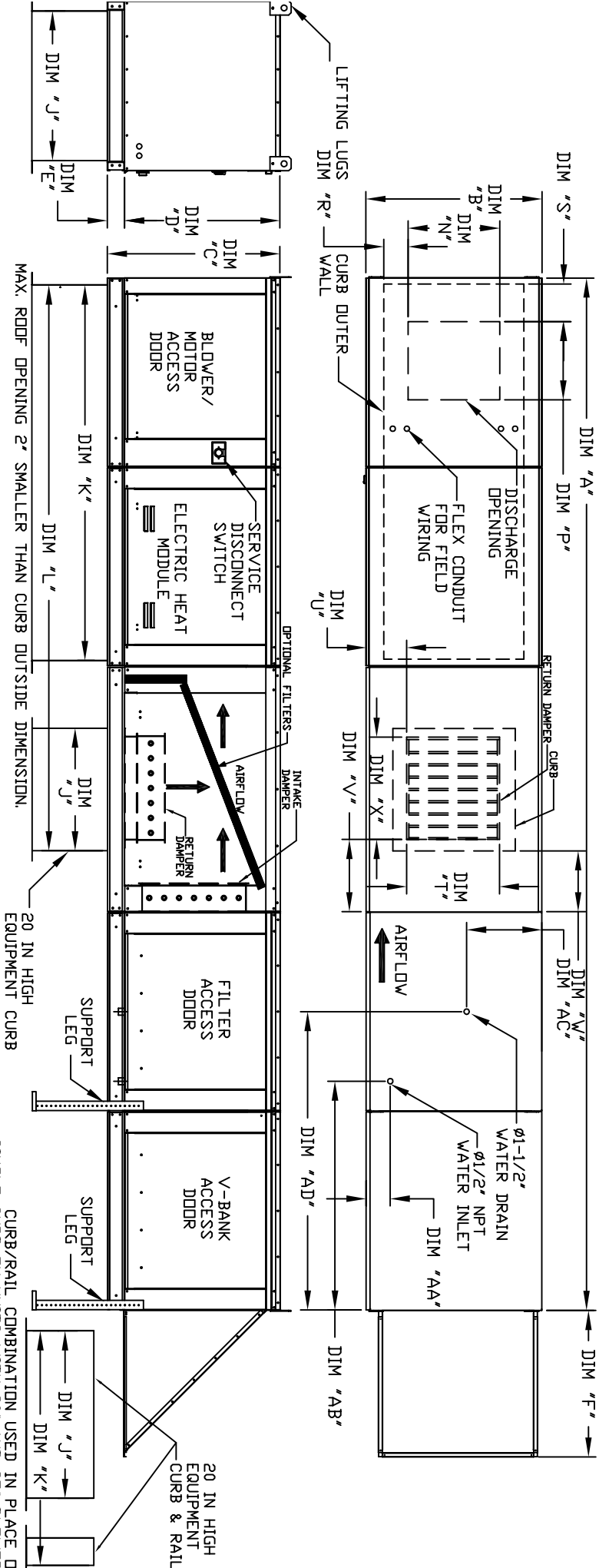


# MODULAR OUTDOOR DOWN DISCHARGE ELECTRIC HEATER WITH V-BANK, EVAPORATIVE COOLER, MIXING BOX AND SCREEN INTAKE

REVISED 08/09/2011



ALL DIMENSIONS ARE NOMINAL AND GIVEN IN INCHES.

20 IN HIGH EQUIPMENT CURB

CURB/RAIL COMBINATION USED IN PLACE OF SINGLE CURB ON UNITS WITH 20' AND 25' BLOWER

MODEL	UNIT DIMENSIONS													CURB					DISCHARGE OPENING					RETURN DAMPER OPENING					WATER INLET DRAIN OPENING				
	A	B	C	D	E	F	J	K	L	N	P	R	S	T	U	V	W	X	AA	AB	AC	AD											
E1-G10	181-1/8	27-3/8	29-3/4	26-1/16	3-3/4	22-3/8	21	71	102-7/16	13-1/4	11-1/2	3-7/8	5-9/16	14	8	11	12.5	18.4	1/2	38-1/2	13	48-1/4											
E2-G15	189-1/8	37-3/8	36-3/4	33-1/16	3-3/4	30-5/16	31	79	115-7/16	18-3/4	16	6-1/8	10-5/16	22-3/4	8	11	7.5	24.4	1/2	38-1/2	18	48-1/4											
E3-G18	206-1/8	41-3/8	43-3/8	38-1/16	5-1/4	34-3/16	35	84	123-7/16	22	19	6-1/2	10-5/16	28	8	7	4.5	30.4	1/2	44	20	57-1/4											
E4-920	243-9/16	48-7/16	51-3/8	46-1/8	5-1/4	47-1/4	42	115-3/16	163-3/16	24-7/8	24-7/8	8-9/16	10-5/8	33	10	11	8	36.4	1/2	41-1/8	23-1/2	52-7/8											
E5-925	253-9/16	59-3/16	58-3/8	53-1/8	5-1/4	49-5/8	52-3/4	125-3/16	179-15/16	31-3/8	31-3/8	10-11/16	12-7/8	43	10	10	6-1/2	43.4	1/2	41-1/8	28-7/8	52-7/8											

MODEL	FILTER SIZE & QTY		MAX. FILTER VELOCITY	STANDARD EVAPORATIVE COOLING UNIT					CELDEK EVAPORATIVE COOLING UNIT				
	SIZE	QTY		TOT. WEIGHT	MEDIA SIZE & QTY	VEL. & MAX. CFM	NOZZLES	MAX. FLOW RATE	TOT. WEIGHT	MEDIA SIZE & QTY	VEL. & MAX. CFM	NOZZLES	MAX. FLOW RATE
E1-G10	16"x20"x2" (3)	@3600 CFM	686 FPM	910 LBS	20"x25"x2" (3)	406 FPM	6	3 GPH	915 LBS	20"x24"x12" (3)	1050 FPM	12	3.9 GPH
E2-G15	20"x25"x2" (3)	@6500 CFM	754 FPM	1305 LBS	16"x20"x2" (8)	429 FPM	10	5 GPH	1300 LBS	25"x32"x12" (3)	1080 FPM	20	6.5 GPH
E3-G18	16"x20"x2" (6)	@8000 CFM	762 FPM	1620 LBS	20"x25"x2" (8)	348 FPM	14	7 GPH	1610 LBS	30"x36"x12" (3)	1067 FPM	28	8.4 GPH
E4-920	16"x20"x2" (10)	@13000 CFM	743 FPM	2585 LBS	16"x20"x2" (15)	572 FPM	24	12 GPH	2555 LBS	38"x43"x12" (3)	1322 FPM	35	10.15 GPH
E5-925	20"x25"x2" (8)	@22000 CFM	956 FPM	3335 LBS	20"x25"x2" (12)	638 FPM	30	15 GPH	3315 LBS	45"x54"x12" (12)	1304 FPM	42	12.6 GPH

\*\* MAX EVAP WATER PRESSURE = 50 PSI @ 70 DEG F

MODEL	V-BANK FILTER	OPTIONAL MIXING BOX FILTERS
E1-G10	20"x25"x2" (3)	10"x16"x2" (5)
E2-G15	16"x20"x2" (8)	20"x25"x2" (2), 16"x25"x2" (1)
E3-G18	20"x25"x2" (8)	15"x20"x2" (4), 15"x15"x2" (2)
E4-920	16"x20"x2" (15)	18"x25"x2" (4), 16"x20"x2" (2)
E5-925	20"x25"x2" (8)	14.5"x19"x2" (12)