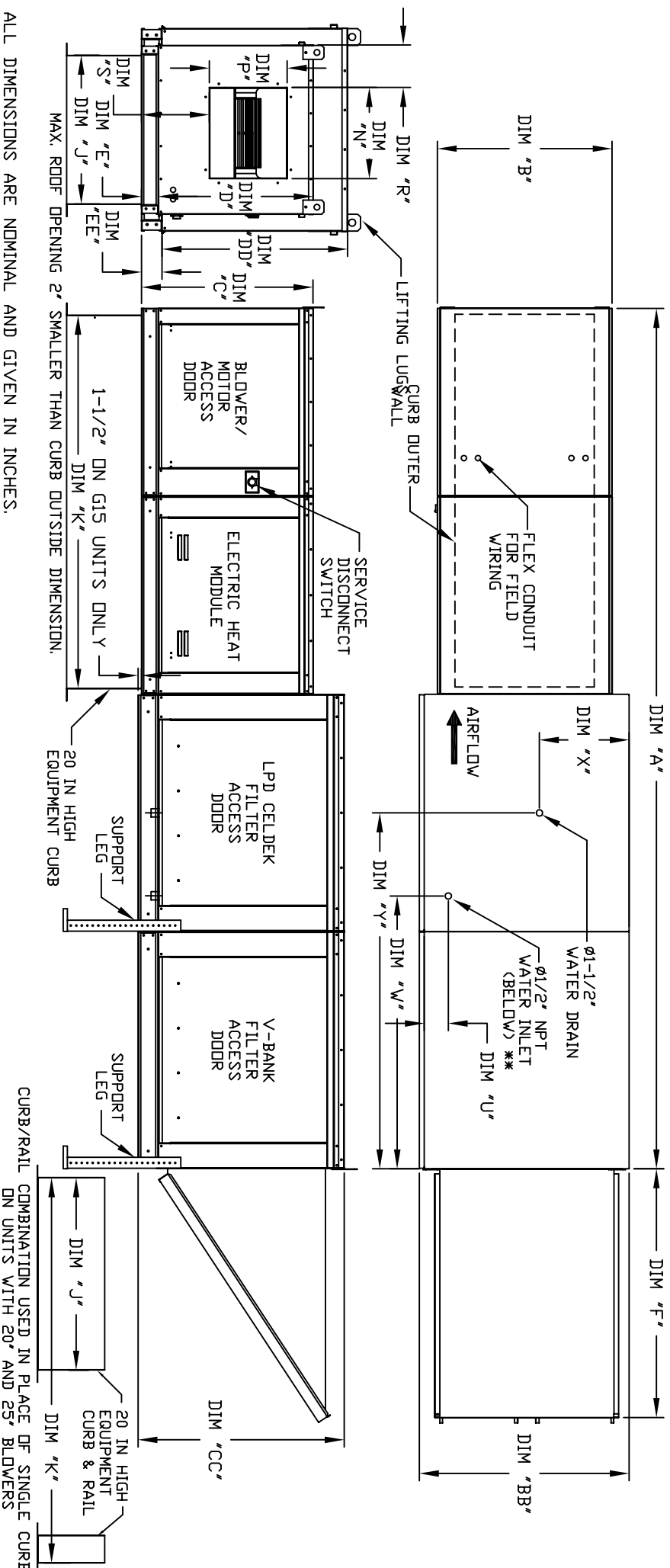


MODULAR OUTDOOR SIDE DISCHARGE ELECTRIC HEATER WITH V-BANK, LPD EVAPORATIVE COOLER AND INTAKE HOOD

JHV/BL P025534H
REV#1 01/09/2012



ALL DIMENSIONS ARE NOMINAL AND GIVEN IN INCHES.

CURB/RAIL COMBINATION USED IN PLACE OF SINGLE CURB ON UNITS WITH 20' AND 25' BLOWERS

MODEL	UNIT DIMENSIONS													CURB					DISCHARGE OPENING				
	A	B	BB	C	CC	D	DD	E	EE	F	J	K	N	P	R	S	J'	J''	K'	K''			
E1-G10	138-7/8	27-3/8	36-3/4	29-3/4	36-3/4	26-1/16	33	3-3/4	3-3/4	53-5/8	21	71	13-1/4	11-1/2	6-3/8	11-7/8							
E2-G15	158-7/8	37-3/8	40-3/4	36-3/4	43-3/8	33-1/16	38-1/8	3-3/4	3-3/4	51-5/8	31	79	18-3/4	16	8-5/8	14-1/16							
E3-G18	158-1/8	41-3/8	47-7/8	43-3/8	51-3/8	38-1/16	46-1/8	5-1/4	5-1/4	76-3/8	35	84	22	19	9	17-7/8							
E4-920	189-1/4	48-7/16	58-5/8	51-3/8	58-3/8	46-1/8	53-1/8	5-1/4	5-1/4	71-3/8	42	115-3/16	24-7/8	24-7/8	11-1/16	19							
E5-925	199-1/4	59-3/16	74-7/8	58-3/8	58-3/8	53-1/8	53-1/8	5-1/4	5-1/4	71-3/8	52-3/4	125-3/16	31-3/8	31-3/8	13-3/16	21-1/4							

UNIT INFORMATION

MODEL	FILTER SIZE & QTY		CELDEK EVAPORATIVE COOLING UNIT			WATER INLET		DRAIN OPENING		V-BANK	
			TOT. WEIGHT	MEDIA SIZE & QTY	NOZZLES	MAX. FLOW RATE	U	W	X	Y	FILTER SIZE & QTY
G10	20"x25"x2" (3)		960 LBS	25"x32"x12"	20	6.5 GPH	4-1/2	38-1/2	18	48-1/4	16"x20"x2" (8)
G15	16"x20"x2" (6)		1225 LBS	30"x36"x12"	28	8.4 GPH	4-1/2	44	20	57-1/4	20"x25"x2" (8)
G18	16"x20"x2" (10)		1630 LBS	38"x43"x12"	35	10.15 GPH	4-1/2	41-1/8	23-1/2	52-7/8	16"x20"x2" (15)
920	20"x25"x2" (8)		2330 LBS	45"x54"x12"	42	12.6 GPH	4-1/2	41-1/8	28-7/8	52-7/8	20"x25"x2" (12)
925	20"x25"x2" (8)		2965 LBS	45"x72"x12"	57	20.1 GPH	4-1/2	41-1/8	37-1/2	52-7/8	20"x25"x2" (12)