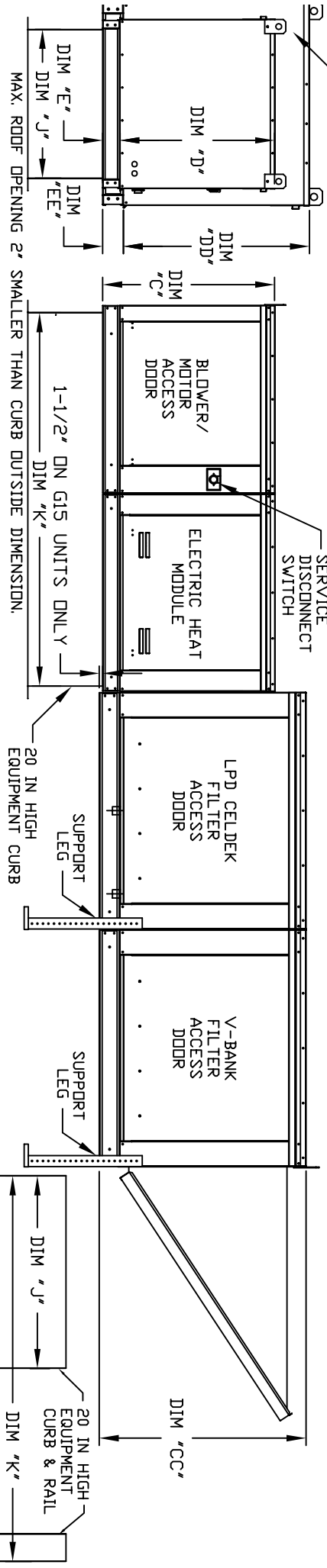
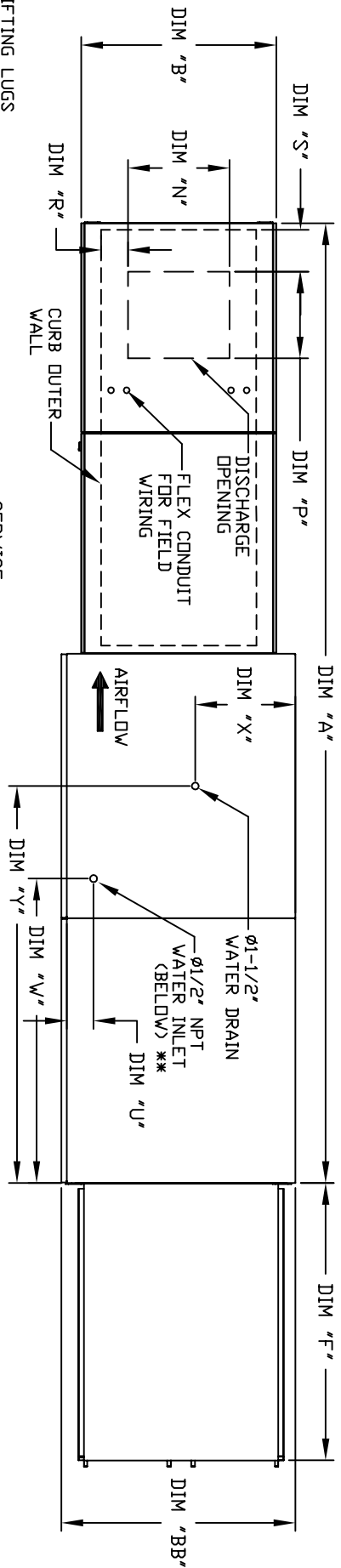


MODULAR OUTDOOR DOWN DISCHARGE ELECTRIC HEATER WITH V-BANK, LPD EVAPORATIVE COOLER AND INTAKE HOOD

JHV/BL P05C52144  
REV#1 01/09/2012



ALL DIMENSIONS ARE NOMINAL AND GIVEN IN INCHES.

CURB/RAIL COMBINATION USED IN PLACE OF SINGLE CURB ON UNITS WITH 20\"/>

MODEL	A	B	BB	C	CC	D	DD	E	EE	F	J	K	N	P	R	S
E1-G10	138-7/8	27-3/8	36-3/4	29-3/4	36-3/4	26-1/16	33	3-3/4	3-3/4	53-5/8	21	71	13-1/4	11-1/2	3-7/8	1-3/4
E2-G15	158-7/8	37-3/8	40-3/4	36-3/4	43-3/8	33-1/16	38-1/8	3-3/4	3-3/4	51-5/8	31	79	18-3/4	16	6-1/8	5-1/2
E3-G18	158-1/8	41-3/8	47-7/8	43-3/8	51-3/8	38-1/16	46-1/8	5-1/4	5-1/4	76-3/8	35	84	22	19	6-1/2	7
E4-920	189-1/4	48-7/16	58-5/8	51-3/8	58-3/8	46-1/8	53-1/8	5-1/4	5-1/4	71-3/8	42	115-3/16	24-7/8	24-7/8	8-9/16	1-1/8
E5-925	199-1/4	59-3/16	74-7/8	58-3/8	66-3/8	53-1/8	61-1/8	5-1/4	5-1/4	71-3/8	42	125-3/16	31-3/8	31-3/8	10-11/16	3-13/16

UNIT INFORMATION

MODEL	FILTER SIZE & QTY	CELDEK EVAPORATIVE COOLING UNIT	WATER INLET	DRAIN OPENING	V-BANK
G10	20"x25"x2" (3)	TOT. WEIGHT MEDIA SIZE & QTY NOZZLES MAX. FLOW RATE	U	X	FILTER SIZE & QTY
G15	16"x20"x2" (6)	960 LBS 25"x32"x12" 20 6.5 GPH	4-1/2	18	16"x20"x2" (8)
G18	16"x20"x2" (10)	1225 LBS 30"x36"x12" 28 8.4 GPH	4-1/2	20	20"x25"x2" (8)
920	20"x25"x2" (8)	1630 LBS 38"x43"x12" 35 10.15 GPH	4-1/2	23-1/2	16"x20"x2" (15)
925	20"x25"x2" (8)	2330 LBS 45"x54"x12" 42 12.6 GPH	4-1/2	28-7/8	20"x25"x2" (12)
		2965 LBS 45"x72"x12" 57 20.1 GPH	4-1/2	37-1/2	20"x25"x2" (12)