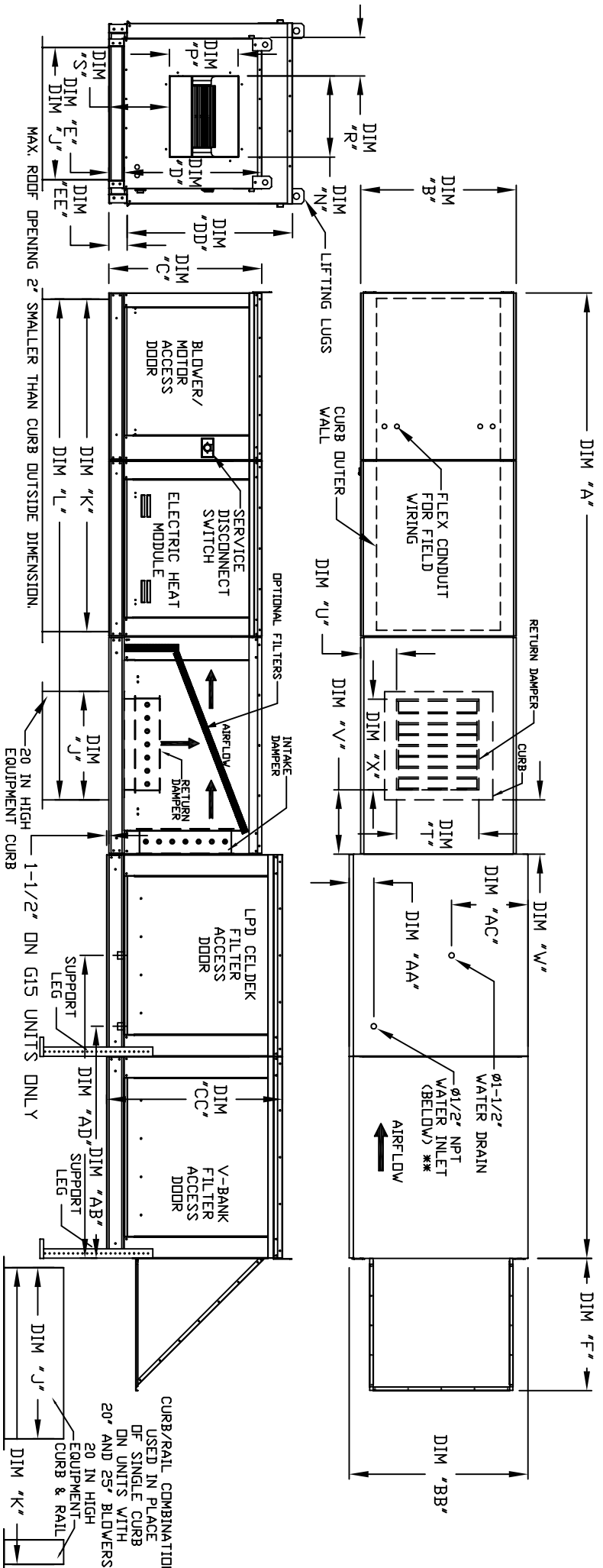


MODULAR OUTDOOR SIDE DISCHARGE ELECTRIC HEATER WITH V-BANK, LPD EVAPORATIVE COOLER, MIXING BOX AND SCREEN INTAKE

SYB/PCB/ESH/SH
REV. 01/09/2012



ALL DIMENSIONS ARE NOMINAL AND GIVEN IN INCHES.

MODEL	UNIT DIMENSIONS													DISCHARGE OPENING													RETURN DAMPER OPENING																									
	A	B	BB	C	CC	D	DD	E	EE	F	J	K	L	N	P	R	S	T	U	V	W	X																														
E1-G10	181-1/8	27-3/8	37-3/8	29-3/4	36-3/4	26-1/16	33	3-3/4	3-3/4	30-5/16	21	102-7/16	13-1/4	11-1/2	6-3/8	11-7/8	14	8	14	12-1/2	18	115-7/16	18-3/4	16	8-5/8	14-1/16	22-3/4	8	11	7-1/2	24	123-7/16	22	19	17-7/8	28	8	7	4-1/2	30	115-3/16	163-3/16	24-7/8	24-7/8	11-1/16	19	33	10	11	8	36	
2-G15	195-1/8	37-3/8	41-3/8	36-3/4	43-3/8	33-1/16	38-1/8	3-3/4	5-1/4	34-3/16	31	79	115-7/16	18-3/4	16	8-5/8	14-1/16	22-3/4	8	11	7-1/2	24	123-7/16	22	19	17-7/8	28	8	7	4-1/2	30	115-3/16	163-3/16	24-7/8	24-7/8	11-1/16	19	33	10	11	8	36										
3-G18	203-1/8	41-3/8	48-7/16	43-3/8	51-3/8	38-1/16	46-1/8	5-1/4	5-1/4	47-1/4	35	84	123-7/16	22	19	17-7/8	28	8	7	4-1/2	30	115-3/16	163-3/16	24-7/8	24-7/8	11-1/16	19	33	10	11	8	36	123-7/16	22	19	17-7/8	28	8	7	4-1/2	30	115-3/16	163-3/16	24-7/8	24-7/8	11-1/16	19	33	10	11	8	36
4-920	243-9/16	48-7/16	59-3/16	51-3/8	58-3/8	46-1/8	53-1/8	5-1/4	5-1/4	49-5/8	42	115-3/16	163-3/16	24-7/8	24-7/8	11-1/16	19	33	10	11	8	36	123-7/16	22	19	17-7/8	28	8	7	4-1/2	30	115-3/16	163-3/16	24-7/8	24-7/8	11-1/16	19	33	10	11	8	36										
5-925	253-9/16	59-3/16	74-7/8	58-3/8	68-3/8	53-1/8	53-1/8	5-1/4	5-1/4	49-5/8	42	125-3/4	161-7/9	15-16	81-3/8	13-3/16	21-1/4	43	10	10	6-1/2	1-1/4	43	123-7/16	22	19	17-7/8	28	8	7	4-1/2	30	115-3/16	163-3/16	24-7/8	24-7/8	11-1/16	19	33	10	11	8	36									

UNIT INFORMATION

MODEL	FILTER SIZE & QTY		CELDEK EVAPORATIVE COOLING UNIT		WATER INLET		DRAIN OPENING		V-BANK		OPTIONAL MIXING BOX FILTERS	
	SIZE	QTY	MEDIA SIZE & QTY	NOZZLES MAX. FLOW RATE	AA	AB	AC	AD	SIZE	QTY	SIZE	QTY
G10	20"x25"x2"	(3)	1005 LBS	25"x32"x12"	4-1/2	38-1/2	18	48-1/4	16"x20"x2"	(8)	20"x25"x2"	(2)
G15	16"x20"x2"	(6)	1400 LBS	30"x36"x12"	4-1/2	44	20	57-1/4	20"x25"x2"	(8)	10"x16"x2"	(5)
G18	16"x20"x2"	(10)	1800 LBS	38"x43"x12"	4-1/2	41-1/8	23-1/2	52-7/8	16"x20"x2"	(15)	15"x20"x2"	(4)
920	20"x25"x2"	(8)	2715 LBS	45"x54"x12"	4-1/2	41-1/8	28-7/8	52-7/8	20"x25"x2"	(12)	18"x25"x2"	(4)
925	20"x25"x2"	(8)	3450 LBS	45"x72"x12"	4-1/2	41-1/8	37-1/2	52-7/8	20"x25"x2"	(12)	14.5"x19"x2"	(12)