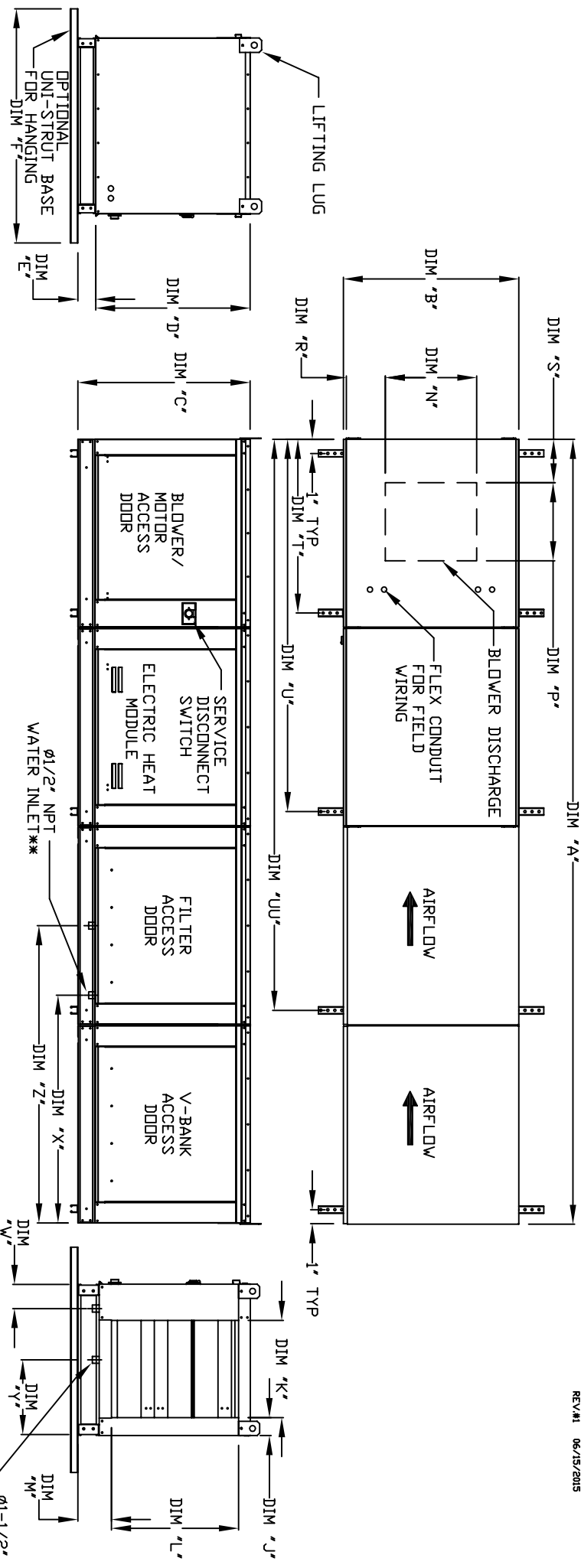


MODULAR INDOOR DOWN DISCHARGE ELECTRIC HEATER WITH V-BANK AND EVAPORATIVE COOLER

REV#1 06/15/2015



ALL DIMENSIONS ARE NOMINAL AND GIVEN IN INCHES.

MODEL	UNIT DIMENSIONS													INTAKE OPENING				DISCHARGE OPENING				WATER INLET DRAIN OPENING			
	A	B	C	D	E	F	J	K	L	M	N	P	R	S	T	U	UU	W	X	Y	Z				
E1-G10	138-7/8	27-3/8	29-3/4	26-1/16	3-3/4	36	3-1/8	16-3/4	21-7/8	5-3/4	13-1/4	11-1/2	6-3/8	7-1/4	31-1/8	73-1/4	105-3/8	4-1/2	38-1/2	13	48-1/4				
E2-G15	146-7/8	37-3/8	36-3/4	33-1/16	3-3/4	48	5-1/8	24-3/4	28-7/8	5-3/4	18-3/4	16	8-5/8	10	39-1/8	81-1/4	113-3/8	4-1/2	38-1/2	18	48-1/4				
E3-G18	163-7/8	41-3/8	43-3/8	38-1/16	5-1/4	60	4-5/8	29-1/4	33-7/8	7-1/2	22	19	9	12	44-1/8	86-1/4	124-3/8	4-1/2	44	20	57-1/4				
E4-920	189-1/4	48-7/16	51-3/8	46-1/8	5-1/4	60	4-5/8	36-1/4	41-7/8	7-1/2	24-7/8	24-7/8	11-1/16	12-1/4	63-3/16	117-3/8	152-5/8	4-1/2	41-1/8	23-1/2	52-7/8				
E5-925	199-1/4	59-3/16	58-3/8	53-1/8	5-1/4	72	4-5/8	47	48-7/8	7-1/2	31-3/8	31-3/8	13-3/16	14-1/2	73-3/16	127-3/8	162-5/8	4-1/2	41-1/8	28-7/8	52-7/8				

UNIT INFORMATION

MODEL	STANDARD EVAPORATIVE COOLING UNIT				CELDEK EVAPORATIVE COOLING UNIT				V-BANK FILTER				
	TOT. WEIGHT	MEDIA SIZE & QTY	VEL. @ MAX. CFM	NOZZLES	MAX. FLOW RATE	TOT. WEIGHT	MEDIA SIZE & QTY	VEL. @ MAX. CFM	NOZZLES	MAX. FLOW RATE	FILTER SIZE & QTY	FILTER SIZE & QTY	FILTER SIZE & QTY
E1-G10	730 LBS	20"x25"x2" (3)	406 FPM	6	3 GPH	735 LBS	20"x24"x12"	1050 FPM	12	3.9 GPH	20"x25"x2" (3)	20"x25"x2" (3)	20"x25"x2" (3)
E2-G15	1055 LBS	16"x20"x2" (8)	429 FPM	10	5 GPH	1050 LBS	25"x32"x12"	1080 FPM	20	6.5 GPH	16"x20"x2" (8)	16"x20"x2" (8)	16"x20"x2" (8)
E3-G18	1290 LBS	20"x25"x2" (8)	348 FPM	14	7 GPH	1280 LBS	30"x36"x12"	1067 FPM	28	8.4 GPH	20"x25"x2" (8)	20"x25"x2" (8)	20"x25"x2" (8)
E4-920	2010 LBS	16"x20"x2" (15)	572 FPM	24	12 GPH	1980 LBS	38"x43"x12"	1322 FPM	35	10.15 GPH	16"x20"x2" (15)	16"x20"x2" (15)	16"x20"x2" (15)
E5-925	2645 LBS	20"x25"x2" (12)	638 FPM	30	15 GPH	2605 LBS	45"x54"x12"	1304 FPM	42	12.6 GPH	20"x25"x2" (12)	20"x25"x2" (12)	20"x25"x2" (12)