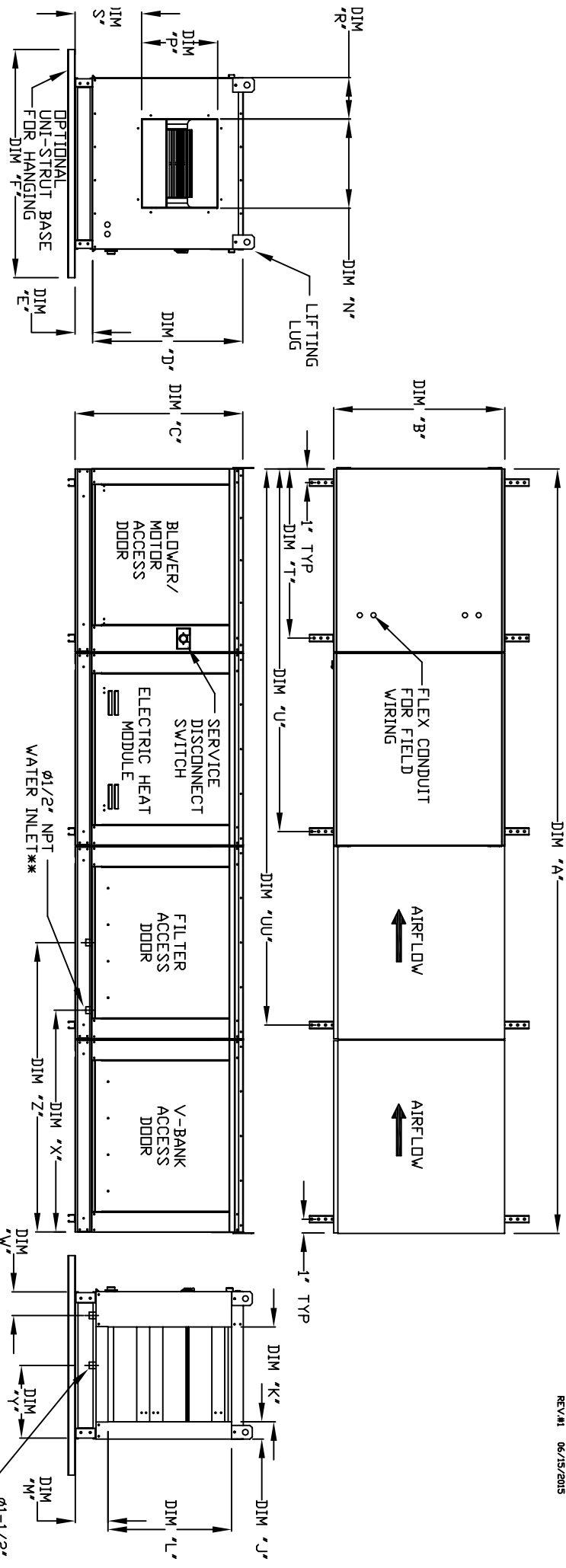


MODULAR INDOOR SIDE DISCHARGE ELECTRIC HEATER WITH V-BANK AND EVAPORATIVE COOLER

REVISION 06/15/2015



ALL DIMENSIONS ARE NOMINAL AND GIVEN IN INCHES.

MODEL	UNIT DIMENSIONS													INTAKE OPENING													DISCHARGE OPENING													WATER INLET DRAIN OPENING																																																																																	
	A	B	C	D	E	F	J	K	L	M	N	P	R	S	T	U	UU	V	X	Y	Z	1	2	3	4	5	6	7	8	9	10	11	12	13	14	15	16	17	18	19	20	21	22	23	24	25	26	27	28	29	30	31	32	33	34	35	36	37	38	39	40	41	42	43	44	45	46	47	48	49	50	51	52	53	54	55	56	57	58	59	60	61	62	63	64	65	66	67	68	69	70	71	72	73	74	75	76	77	78	79	80	81	82	83	84	85	86	87	88	89	90	91	92	93	94	95	96	97	98	99	100
E1-G10	138-7/8	27-3/8	29-3/4	26-1/16	3-3/4	36	3-1/8	16-3/4	21-7/8	5-3/4	13-1/4	11-1/2	6-3/8	11-7/8	31-1/8	73-1/4	105-3/8	4-1/2	38-1/2	13	48-1/4	1	2	3	4	5	6	7	8	9	10	11	12	13	14	15	16	17	18	19	20	21	22	23	24	25	26	27	28	29	30	31	32	33	34	35	36	37	38	39	40	41	42	43	44	45	46	47	48	49	50	51	52	53	54	55	56	57	58	59	60	61	62	63	64	65	66	67	68	69	70	71	72	73	74	75	76	77	78	79	80	81	82	83	84	85	86	87	88	89	90	91	92	93	94	95	96	97	98	99	100
E2-G15	146-7/8	37-3/8	36-3/4	33-1/16	3-3/4	48	5-1/8	24-3/4	28-7/8	5-3/4	18-3/4	16	8-5/8	14-1/16	39-1/8	81-1/4	113-3/8	4-1/2	38-1/2	18	48-1/4	1	2	3	4	5	6	7	8	9	10	11	12	13	14	15	16	17	18	19	20	21	22	23	24	25	26	27	28	29	30	31	32	33	34	35	36	37	38	39	40	41	42	43	44	45	46	47	48	49	50	51	52	53	54	55	56	57	58	59	60	61	62	63	64	65	66	67	68	69	70	71	72	73	74	75	76	77	78	79	80	81	82	83	84	85	86	87	88	89	90	91	92	93	94	95	96	97	98	99	100
E3-G18	163-7/8	41-3/8	43-3/8	38-1/16	5-1/4	60	4-5/8	29-1/4	33-7/8	7-1/2	22	19	9	17-7/8	44-1/8	86-1/4	124-3/8	4-1/2	44	20	57-1/4	1	2	3	4	5	6	7	8	9	10	11	12	13	14	15	16	17	18	19	20	21	22	23	24	25	26	27	28	29	30	31	32	33	34	35	36	37	38	39	40	41	42	43	44	45	46	47	48	49	50	51	52	53	54	55	56	57	58	59	60	61	62	63	64	65	66	67	68	69	70	71	72	73	74	75	76	77	78	79	80	81	82	83	84	85	86	87	88	89	90	91	92	93	94	95	96	97	98	99	100
E4-920	189-1/4	48-7/16	51-3/8	46-1/8	5-1/4	60	4-5/8	36-1/4	41-7/8	7-1/2	24-7/8	24-7/8	11-1/16	19-1/8	63-3/16	117-3/8	152-5/8	4-1/2	41	23-1/2	52-7/8	1	2	3	4	5	6	7	8	9	10	11	12	13	14	15	16	17	18	19	20	21	22	23	24	25	26	27	28	29	30	31	32	33	34	35	36	37	38	39	40	41	42	43	44	45	46	47	48	49	50	51	52	53	54	55	56	57	58	59	60	61	62	63	64	65	66	67	68	69	70	71	72	73	74	75	76	77	78	79	80	81	82	83	84	85	86	87	88	89	90	91	92	93	94	95	96	97	98	99	100
E5-925	199-1/4	59-3/16	58-3/8	53-1/8	5-1/4	72	4-5/8	47	48-7/8	7-1/2	31-3/8	31-3/8	13-3/16	21-9/16	73-3/16	162-5/8	212-1/8	4-1/2	41	28-7/8	52-7/8	1	2	3	4	5	6	7	8	9	10	11	12	13	14	15	16	17	18	19	20	21	22	23	24	25	26	27	28	29	30	31	32	33	34	35	36	37	38	39	40	41	42	43	44	45	46	47	48	49	50	51	52	53	54	55	56	57	58	59	60	61	62	63	64	65	66	67	68	69	70	71	72	73	74	75	76	77	78	79	80	81	82	83	84	85	86	87	88	89	90	91	92	93	94	95	96	97	98	99	100

UNIT INFORMATION

STANDARD EVAPORATIVE COOLING UNIT

MODEL	TOT. WEIGHT	MEDIA SIZE & QTY	VEL. @ MAX. CFM	NOZZLES	MAX. FLOW RATE
E1-G10	730 LBS	20"x25"x2" (3)	406 FPM	6	3 GPH
E2-G15	1055 LBS	16"x20"x2" (8)	429 FPM	10	5 GPH
E3-G18	1290 LBS	20"x25"x2" (8)	348 FPM	14	7 GPH
E4-920	2010 LBS	16"x20"x2" (15)	572 FPM	24	12 GPH
E5-925	2645 LBS	20"x25"x2" (12)	638 FPM	30	15 GPH

CELDEK EVAPORATIVE COOLING UNIT

MODEL	TOT. WEIGHT	MEDIA SIZE & QTY	VEL. @ MAX. CFM	NOZZLES	MAX. FLOW RATE
E1-G10	735 LBS	20"x24"x12"	1050 FPM	12	3.9 GPH
E2-G15	1050 LBS	25"x32"x12"	1080 FPM	20	6.5 GPH
E3-G18	1280 LBS	30"x36"x12"	1067 FPM	28	8.4 GPH
E4-920	1980 LBS	38"x43"x12"	1322 FPM	35	10.15 GPH
E5-925	2605 LBS	45"x54"x12"	1304 FPM	42	12.6 GPH

V-BANK FILTER

MODEL	TOT. WEIGHT	MEDIA SIZE & QTY	VEL. @ MAX. CFM	NOZZLES	MAX. FLOW RATE
E1-G10	730 LBS	20"x25"x2" (3)	406 FPM	6	3 GPH
E2-G15	1055 LBS	16"x20"x2" (8)	429 FPM	10	5 GPH
E3-G18	1290 LBS	20"x25"x2" (8)	348 FPM	14	7 GPH
E4-920	2010 LBS	16"x20"x2" (15)	572 FPM	24	12 GPH
E5-925	2645 LBS	20"x25"x2" (12)	638 FPM	30	15 GPH

WAV E/VA/D V/ATFD DDCR/SDR - EN DCT @ 7N HFC C